



Eastridge to BART Regional Connector Stakeholder Working Group

February 25, 2021 6:30 p.m.

Meeting Overview

- Rollcall and SWG Members Update
- November Meeting Minutes
- Community Outreach
- Project Status Updates (Includes Real Estate, Planning, Engineering)
- Construction Schedule (Regional Measure 3)
- Tree Removal and Mitigation
- Overview of Structure Construction (explains traffic impacts for future discussions)
- Open Discussion
- Wrap up

Zoom Webinar

- Webinar is being recorded
- Microphones on mute
- Use your real name
- One person speaks at a time
- Raise hand to speak*
- Code of Conduct - Respectful

Zoom Meeting Code of Conduct

- Treat all participants with kindness, respect and consideration
- Value a diversity of views and opinions
- Communicate openly, critiquing ideas rather than individuals
- VTA will not tolerate demeaning, discriminatory or harassing behavior and speech. VTA staff will remove participants who refuse to adhere to this code.
- **Ask for (and accept) help. Embrace the moment and try something new.**
- **Mute** your audio when you aren't speaking.
- **Raise your hand** if you'd like to speak and lower your hand after speaking.

SWG Members

- **Ernesto Barajas** – Cassel Neighborhood Association, District 5
- **Sandy Flores** – Capitol Park Goss Dobern Neighborhood Association, District 5
- **Julie Nunes** – Lyndale Neighborhood Association, District 5
- **Laura Arechiga** – Welch Park Neighborhood Association, District 8
- **Jeremy Barousse** – District 8 Roundtable, District 8
- **Craig Ferguson** – Thompson Creek Neighborhood Association, District 8
- **Andres Solomonoff** – Brahms/Edgeview Neighborhood Association, District 8
- **Jessica Molina** – Catholic Charities, First 5
- **John Petersen** – Eastridge Mall

VTA Project Staff

Community Outreach and Public Engagement

- Kathleen Podrasky – Community Outreach Supervisor
- David Lovato – Public Communications Specialist

Engineering and Program Delivery

- Ven Prasad, P.E. Project Manager
- Hassan Basma, Transportation Engineering Manager
- Ken Ronsse, Deputy Director, Rail & Facilities
- Ziad Dweiri, Project Engineer

November 19, 2020 SWG Minutes

- Next Generation High-Capacity Transit Study Presentation
- Video rendering of light rail extension
- Ocala Area History
- Project Status Updates
- Community Outreach Overview
- 2021 Work Plan
- Open Discussion
- Wrap up – Next Meeting/Next PAB meeting dates

Community Outreach



Eastridge to BART Regional Connector Effective on or about February 8, 2021

The following will be in effect as indicated, weather and conditions permitting.

WHAT: In advance of future utility relocation activities that are expected to begin in spring, the Eastridge to BART Regional Connector project will begin some preliminary construction activities along Capitol Avenue, behind the Crossroads Shopping Center.

WHERE: Crossroads Shopping Center located at 461 S. Capitol Avenue, activities are along a portion of the landscaped area, and sidewalk on the Capitol Avenue side. Access to businesses will always remain open.

WHEN: Beginning on or about February 8, 2021. Activities are expected to continue through mid-March. Crews will work Monday through Friday, 7am-4pm.

WHAT TO EXPECT:

- Activities include and are not limited to:
 - Demolition, excavation, compacting equipment, and truck/back up alarms
 - Removal of 4 trees on private property
 - Sidewalk closure, curb and sidewalk removal
 - Drainage relocation
 - Private water and irrigation reconfiguration
 - Forming and pouring of new sidewalk
 - Replacement of concrete
 - Restoration of affected areas



LANE CLOSURES AND PEDESTRIAN DETOUR:

- Intermittent, temporary lane closures will take place 9am-3pm
- A pedestrian detour will be provided as needed for certain activities

NOTES: For the safety of the public and construction workers, traffic control measures will be used when needed. Information and warning signs will be posted to ensure safety. Construction crews will make every effort to maintain access and minimize inconvenience to motorists, bicyclists, pedestrians, businesses and neighbors.

VTA Community Outreach: (408) 321-7575 TTY only: (408) 321-2330

Email: community_outreach@vta.org Website: www.vta.org/eastridgebart



- SWG Members Survey
- Ocala Field Visit
- Advance Construction Notice
- Newsletter
- Business Outreach

Conexión Regional de Eastridge a BART En vigor a partir del 8 de febrero de 2021

Las siguientes actividades se llevarán a cabo, tal y como se indica, si el clima y las condiciones lo permiten:

¿DE QUÉ SE TRATA? Antes de las futuras actividades de reubicación de servicios públicos que deberán iniciarse en la primavera, el proyecto de Conexión Regional de Eastridge a BART comenzará a realizar algunas actividades preliminares de construcción a lo largo de Capitol Avenue, detrás del Crossroads Shopping Center.

DÓNDE: En el Crossroads Shopping Center, situado en 461 S. Capitol Avenue. Las actividades se centran en una porción del área de jardines, así como en la acera sobre Capitol Avenue. El acceso a los negocios permanecerá abierto en todo momento.

CUÁNDO: A partir del 8 de febrero de 2021, aproximadamente. Se espera que las actividades continúen hasta finalizar a mediados de marzo.

Las cuadrillas de construcción trabajarán de lunes a viernes, de 7 a.m. a 4 p.m.

QUE SE PUEDE ESPERAR: Las actividades incluyen, entre otras:

- Demolición, excavación, uso de compactación y alarmas de camiones en reversa
- Remover 4 árboles en propiedad privada
- Cierre de la acera, remover la acera y el borde de la acera

- Reubicación de desagües
- Reconfiguración de sistema privado de agua y riego
- Formación y vaciado de acera nueva
- Reemplazo de aceras nuevas
- Restauración de las áreas afectadas

CIERRE DE CARRILES Y DESVÍO PARA PEATONES

- Se cerrarán carriles en forma temporal e intermitente de 9 a.m. a 3 p.m.
- Para ciertas actividades se proveerá un desvío para peatones según sea necesario

NOTAS: Para mayor seguridad del público y del personal de construcción, se implementarán medidas de control del tránsito conforme sean necesarias. Se colocarán avisos de información y precaución para garantizar la seguridad. Las cuadrillas de construcción harán todo lo posible por mantener el acceso y minimizar los inconvenientes para los conductores, ciclistas, peatones, negocios y vecinos.

CONTACTO: Programa de Extensión de VTA en la Comunidad VTA Community Outreach: (408) 321-7575 TTY únicamente: (408) 321-2330 Email: community_outreach@vta.org Sitio web: www.vta.org/eastridgebart

Kết nối Khu vực Eastridge với BART Có hiệu lực vào hoặc gần ngày 8 Tháng Hai, 2021

Những việc sau đây sẽ được thực hiện như đã trình bày, nếu thời tiết và các điều kiện cho phép:

HỘI ĐỒNG: Trước khi các hoạt động đi đất bắt đầu trong tương lai dự kiến sẽ diễn ra vào mùa xuân, dự án kết nối Khu vực Eastridge với BART sẽ bắt đầu một số hạng mục xây dựng ban đầu dọc Capitol Avenue, phía sau Trung Tâm Mua Sắm Crossroads (Crossroads Shopping Center).

DIỆN MẶT: Crossroads Shopping Center nằm tại 461 S. Capitol Avenue, các hoạt động diễn ra dọc theo một phần khu vực cảnh quan, và vỉa hè ở phía Capitol Avenue. Lối vào các cửa sổ kinh doanh luôn mở.

THỜI GIẠN: Bắt đầu vào hoặc gần ngày 8 Tháng Hai, 2021. Các hoạt động xây dựng sẽ tiếp tục diễn ra cho đến giữa Tháng Ba, đến khi hoàn tất.

NHỮNG ĐIỀU DỰ KIẾN SẼ XẢY RA: Các hoạt động đã bao gồm, nhưng không giới hạn:

- Thiết bị đập búa, xúc đất, nén, và cảnh báo xe tải/khí xe tải
- Làm bỏ 4 cây trên bất động sản tư nhân
- Đóng và hạ, gõ bả bê tông và vỉa hè
- Đào hệ thống thoát nước

- Bố trí lại đường nước và thoát nước của nhân
- Tạo khuôn và đổ bê tông vỉa hè mới
- Thay bê tông mới
- Phục hồi các khu vực bị ảnh hưởng

ĐÓNG CÁN LÀN ĐƯỜNG VÀ LỐI ĐI BỘ ĐƯỜNG VONG

- Đóng các làn đường một chiều, tạm thời sẽ diễn ra trong khoảng từ 9am-3pm
- Mời lái đi bộ đường vòng sẽ được cung cấp nếu cần dành cho các hoạt động nhất định

LƯU Ý: Để bảo đảm an toàn cho công chúng và công nhân xây dựng, các biện pháp điều khiển giao thông sẽ được áp dụng khi cần. Các bảng thông báo và cảnh báo sẽ được dựng lên để báo đảm an toàn. Đội công nhân xây dựng sẽ cố gắng bám dính để lái và gửi thông tin về bất kỳ xe mô tô, xe đạp, người đi bộ, các cửa sổ kinh doanh và khu lân cận.

THÔNG TIN LIÊN LẠC: Ban Tiếp Nhận Công Đồng của VTA: (408) 321-7575 Chỉ dành cho TTY: (408) 321-2330 Email: community_outreach@vta.org Trang web: www.vta.org/eastridgebart

Eastridge 至 BART 區域連接線 2021 年 2 月 8 日當天或附近日期生效

以下通知將在天氣和其他條件允許的情況下生效:

事由: 公用事業設施的遷移作業預計於春季開始。之前, Eastridge 至 BART 連接線將首先在 Crossroads 購物中心後方的 Capitol Avenue 沿線進行一些前期施工活動。

地點: Crossroads 購物中心, 地址: 461 S. Capitol Avenue。作業範圍包括該區域的一部分, 以及 Capitol Avenue 一側的人行道。商業樓層的出入口將保持暢通。

時間: 2021 年 2 月 8 日當天或前後開始。施工活動預計將從三月中旬, 直到完成為止。施工時間為星期一至星期五, 上午 7 時至下午 4 時。

可預期的活動: 施工活動包括 (但不限於):

- 拆除、挖土、裝機具、卡車/車隊背卸
- 移除私人物業上的 4 棵
- 人行道封閉。封閉路線和人行道
- 遷移排水系統

- 私人供水和灌溉設施重新安裝
- 新人行道安裝和澆注
- 更換排水系統
- 專業安裝警告標誌

車道封閉和行人改道

- 上午 9 時至下午 3 時封閉車道, 臨時性的車道封閉
- 部分活動將提供必要條件供行人繞道

注意: 為保障市民和施工人員的安全, 將需要採取交通管制措施。我們將掛立告示和警告標誌以確保安全。工程隊將盡一切努力維持道路暢通, 儘量減少汽車、自行車、行人、商業樓層和附近居民的不便。

聯絡人: VTA 社區外展組: (408) 321-7575 TTY 專線: (408) 321-2330 電子郵件: community_outreach@vta.org 網址: www.vta.org/eastridgebart

Eastridge to BART Regional Connector Magkakabisa sa o mga Pebrero 8, 2021

Ang mga sumusunod ay magkakabisa depende sa lagay ng panonon at mga kondisyon:

HO ANO GAGAWIN: Bilang paghahanda sa gagawing relokasyon ng unit, na maaaring magamula sa tagpuan, ang proyektong Eastridge to BART Regional Connector ay magagamit sa paanang gawain ng konstruksiyon sa kahabaan ng Capitol Avenue, sa likod ng Crossroads Shopping Center.

SAAAN GAGAWIN: Ang Crossroads Shopping Center ay nasa 461 S. Capitol Avenue, gagawin ang mga pagpapasaya sa ilang bahagi sa kahabaan ng landscaped area, at sa bangketa sa pang ng Capitol Avenue. Papatay mag access sa mga negosyo sa lugar.

KAILAN GAGAWIN: Simula sa o mga Pebrero 8, 2021, inaasahang magpapatay ang gawain hanggang sa katapusan ng Mayo, hanggang sa mataposan. Magtatrabaho ang mga trabahador nang Lunes hanggang Biyernes, 7am-4pm.

ANO ANO MAAASAAN: Kasama ngunit hindi limitado sa mga gawain ang:

- Mga equipment sa demolition, pagpapatay, at pagkalkal, at mga truck/back up alarm
- Pagtatanggal ng 4 puno sa ilang pribadong ararian
- Pagpasara ng bangketa, pagtatanggal ng gilid ng kalsada at bangketa

- Paglipat ng daanan ng tubig (trainage)
- Pagbabago ng ayos ng pribadong distribusyon ng tubig at rigasyon
- Pagpapalit sa pagbubuhos ng bagong bangketa
- Pagpapalit ng bagong kongkreto
- Restorasyon ng mga apelanding lugar

MGA PANGASASARAN NG LANE AT DETOUR PARA SA PEDESTRIAN:

- May patigil-tigil, pansamantalang mga pagpasara ng lane nang 9am-3pm
- Magkakaroon ng detour para sa pedestrian kapag kailangan para sa ilang trabaho

MGA TALA: Para sa kaipalagan ng publiko at mga manggagawa sa konstruksiyon, magtatagpuan ng mga katanggap-tanggap na pagkontrol ng trapiko, Magapasa ng impormasyon at babala para matiyak ang kaipalagan. Magkakaroon ng libong mga manggagawa ng konstruksiyon para mapanatili ang access at mapakaurin ang mga sagabal sa mga motorista, nagbibisleta, pedestrian, at kasalman ng bus at light rail ng VTA.

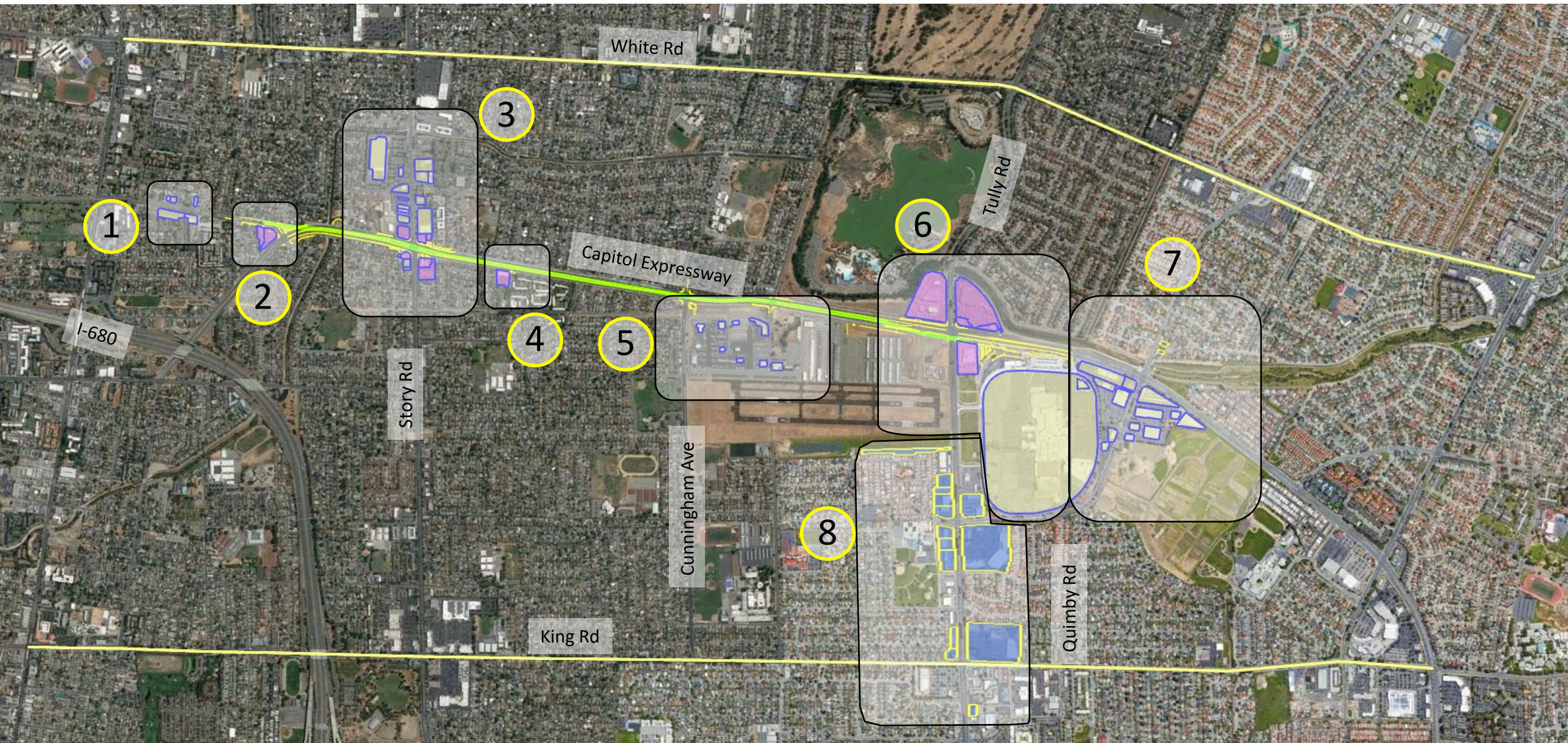
KONTAKIN: VTA Community Outreach: (408) 321-7575 TTY lamang: (408) 321-2330 Email: community_outreach@vta.org Website: www.vta.org/eastridgebart



Community Outreach

Businesses Matrix

EBRC Business Map



Zone 1



Capitol Avenue

Wilber Avenue

A

B

C

D

E

Zone 1

Letter	Business Name	Type	Address	Telephone	Contact	Hours of Operation	Notes
1A	M and C Taxes	Professional Service	184 S Capitol Ave	(408) 649-4348	Cecilia	Mon-Sat 10am-8pm	
1B	Capitol Tailor	Home Business	190 S Capitol Ave	(408) 347-1090	Pham	Mon-Fri 9am-6pm Sat 10am-5pm Sun Cls	
1C	Tam's Tailoring Service	Home Business	256 Capitol Ave	(669) 262-0898	Tam		Followed up twice; left fact sheet 05/24
1D	El Culichi	Food Service	175 S Capitol Ave	(669) 235-5662	Cassandra	Mon-Sun 10am-12am	
	Senses Restaurants	Food Service	175 S Capitol Ave	(408) 791- 6850		Mon-Thur 3pm-10pm Fri-Sat 11am-11pm Sun 11am-10pm	Not open when visited on 05/10
	Stop and Buy Food	Retail	175 S Capitol Ave	(408) 251-6786	Shawn	Mon-Sun 9am-11pm	
	Halal Market	Food Service/Retail	175 S Capitol Ave	(408) 272-0786	Mhammed Ismali	Tuesday Closed Mon-Sun 10am-8pm	
	Lanny's Bridal	Retail	175 S Capitol Ave #J	(408) 259-1972	Tina	Mon-Fri 10:30am-6pm Sat-Sun 10:30am-5pm	
	Universal Dental	Professional Service	175 S Capitol Ave Ste E	(408) 923-3073	Dr. Quyen	Mon 1-6pm Tues-Fri 9am-6pm Sat- Sun Closed	
1E	Bulldog Lifestyles	Other	285 S. Capitol Ave	(408) 729-3605	John	Mon-Sat 10am-11pm Sun 11am-10pm	

Zone 2

Capitol Avenue

A

B

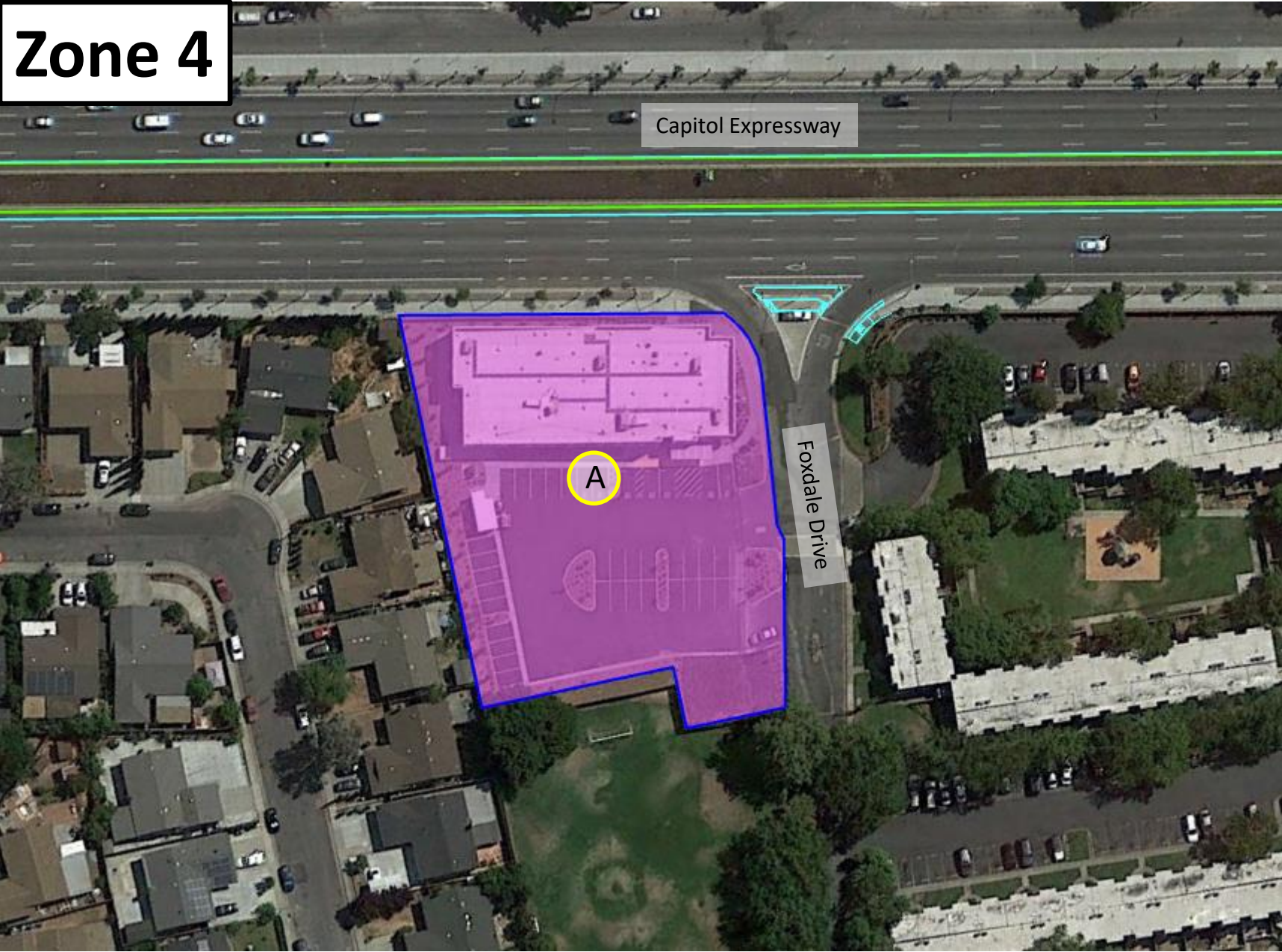
Capitol Expressway



Zone 3



Zone 4



Capitol Expressway

Foxdale Drive

Zone 5

Capitol Expressway

Ocala Avenue

Cunningham Avenue

A

B

C

D

E

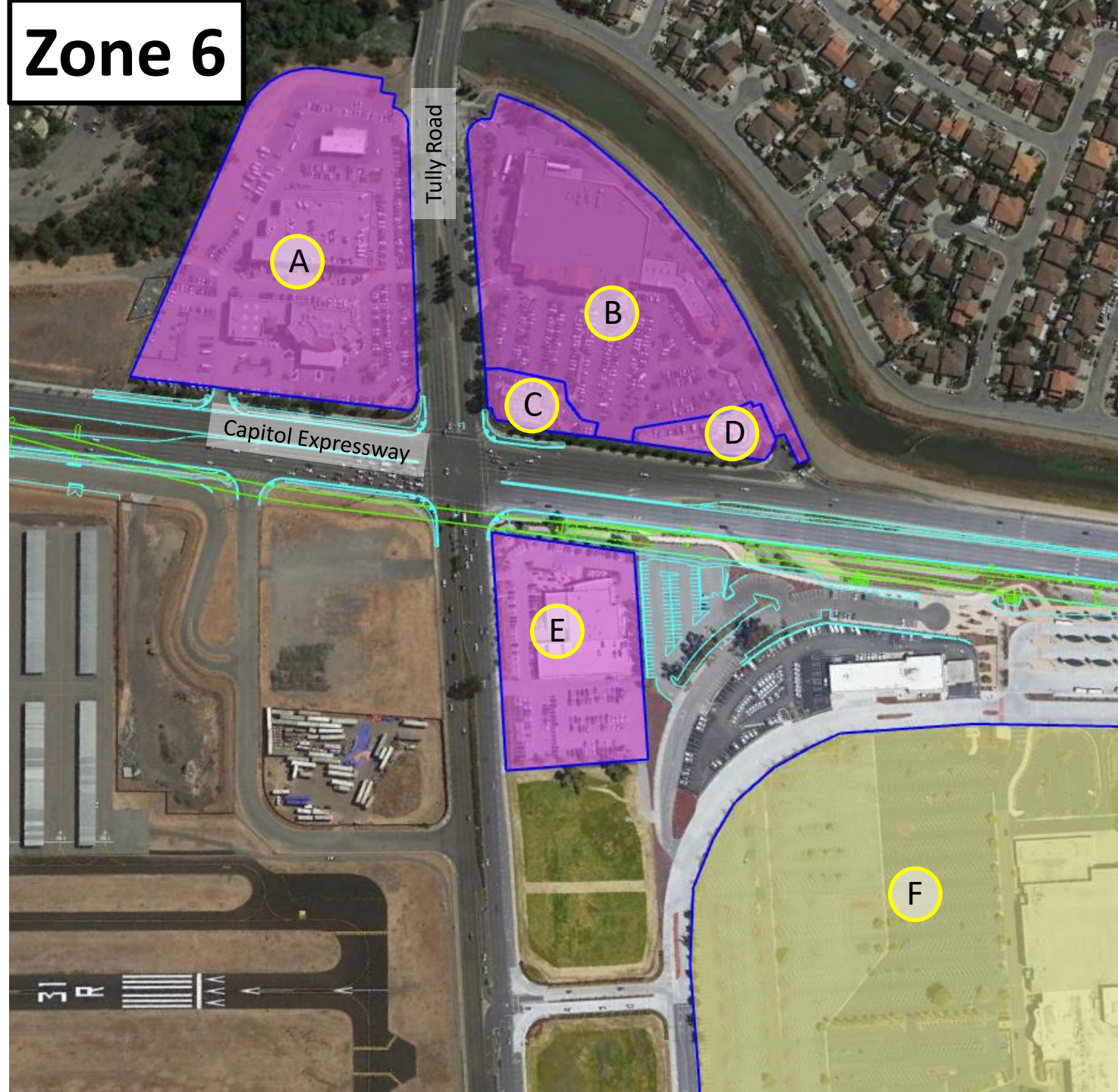
F

G

H



Zone 6



Zone 7



Zone 8



A

B

D

E

C

H

I

J

G

F

K

L

M

N

Future Topics and Work Plan Through 2021

Topic	August 27, 2020	November 19, 2020	February 25, 2021	May 21, 2021	August 26, 2021	November 18, 2021
SWG Member Update		X	X	X	X	X
Status Updates (Real Estate, Planning/Engineering/Schedule)	X	X	X	X	X	X
Construction Schedule		X	X	X	X	X
Ocala Station History		X				
Next Generation/New Technology Presentation		X				
Art Enhancement				X		
Future Use of Reid-Hillview Airport					X	
Construction Education & Outreach Plan(ning)	X	X	X	X	X	X
Schools Matrix		X				
Business Matrix			X			
Noise & Vibration			X	X	X	X
Traffic - Explanation & Mitigation			X	X	X	X
Tree Removal & Mitigation			X			

Project Status Updates

- Real Estate
 - Negotiations with County and Valley Water continues
 - Acquisitions complete on ten properties
- Engineering
 - Working on the final bid documents
 - Preparing engineering specifications for noise and vibration
- Schedule
 - Advanced Minor Construction
 - Utility Relocation

Advanced Minor Construction

- *Previously shared in November, and updated for February:*
 - This work is needed for future widening of the road
 - This work is to accommodate future relocated utility facilities
 - Actively working today on Capitol Avenue, and at the Chevron Station located at Story Road and Capitol Expressway
 - Seven trees have been removed
 - Irrigation and minor civil work
 - **Removal of small building located at the northwest corner of Story Road and Capitol Expressway**

Utilities Relocation

- PG&E Electric Transmission Relocation – 2nd Quarter 2021
- PG&E Underground Electric & Gas – 2nd Quarter 2021
- San Jose Water Line Relocation – 2nd Quarter 2021
- AT&T, Verizon / MCI, Comcast, Zayo, Crown Castle – 2nd Quarter 2021

Regional Measure 3 (RM3) Funding

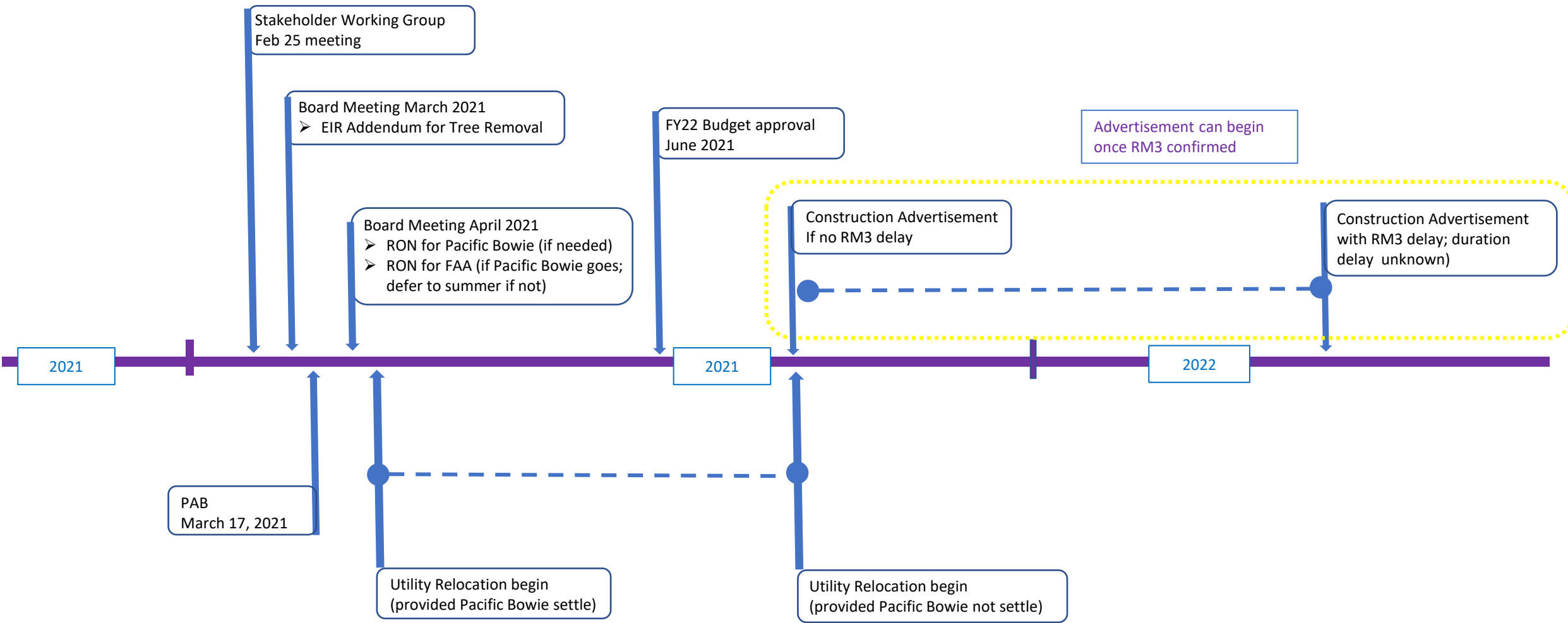
Project Cost Information

Budget

Funding	Estimate	Appropriation	Secured	To be secured
Measure A	313,396,958	289,184,428	289,184,428	24,212,529
SB1	9,442,000	9,442,000	9,442,000	-
RM3	130,000,000	127,539,631	-	130,000,000
LCTOP1	15,161,042	2,460,369	2,460,369	12,700,673
Total	468,000,000	428,626,428	301,086,797	166,913,202

- Measure A used for engineering
- SB1 used for property acquisition and utility relocation
- RM3, LCTOP1 and Measure A used for construction
 - Delay of potential 1 to 1 ½ year for RM3 funding
 - RM3 currently with California Supreme Court for challenge
- Measure A requesting \$24M in next FY 22/23 budget cycle for construction and management

Upcoming Contract Activities



Tree Removal

Utility Relocation Layout

Proposed condition

- Light rail horizontal location in place of current PG&E transmission line



- Existing PG&E Line
- Proposed PG&E Line
- Proposed Light Rail Structure

Ⓝ Location referenced on slide 22

Existing Street Trees



Along Capitol Expressway from Ocala To North of Tully (public right of way)



Just North of Tully (private property)



Just South of Tully (private property)



Eastridge to BART Regional Connector

Overview of Structure Construction

February 2021

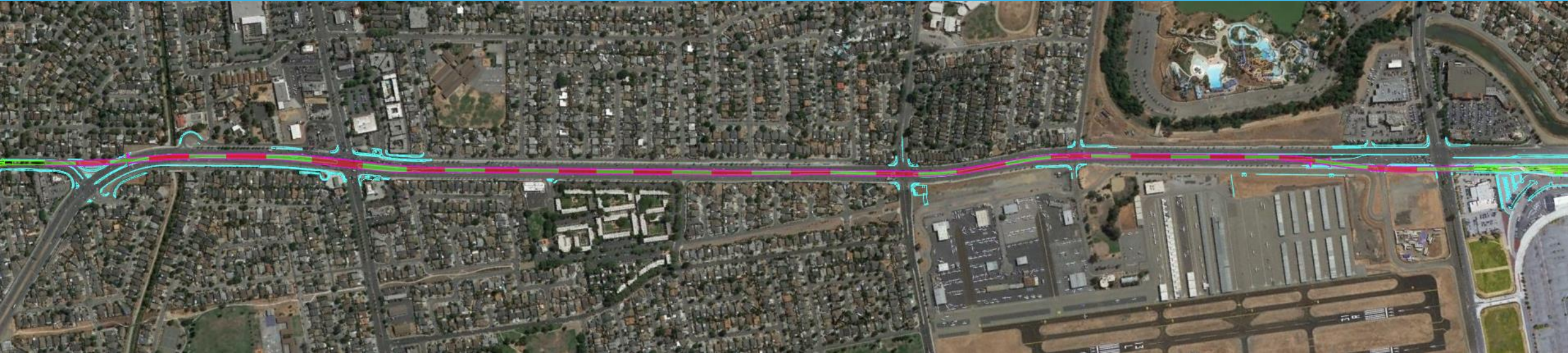
General Steps for Construction

- Relocate utility conflicts
- Widen road to make room in median
- Place barrier and shift traffic
- Build bridge
- Construct light rail
- Build median
- Bioretention and finish median
- Roadway paving and striping

Steps to Build Bridge

- Widen road to make room in median
- Build foundation (excavated footing, drive piles, pour footing)
- Form and pour columns
- Place falsework and form structure
- Build and pour structure box girder
- Form and pour connection between frames (hinges)
- Remove falsework

Light Rail Structure Alignment



Alignment showing the 37 bridge segments (frames)

Structure Construction Process



Foundation



Pile Driving



Column Steel



Column Concrete



Falsework



Bridge Steel and Concrete

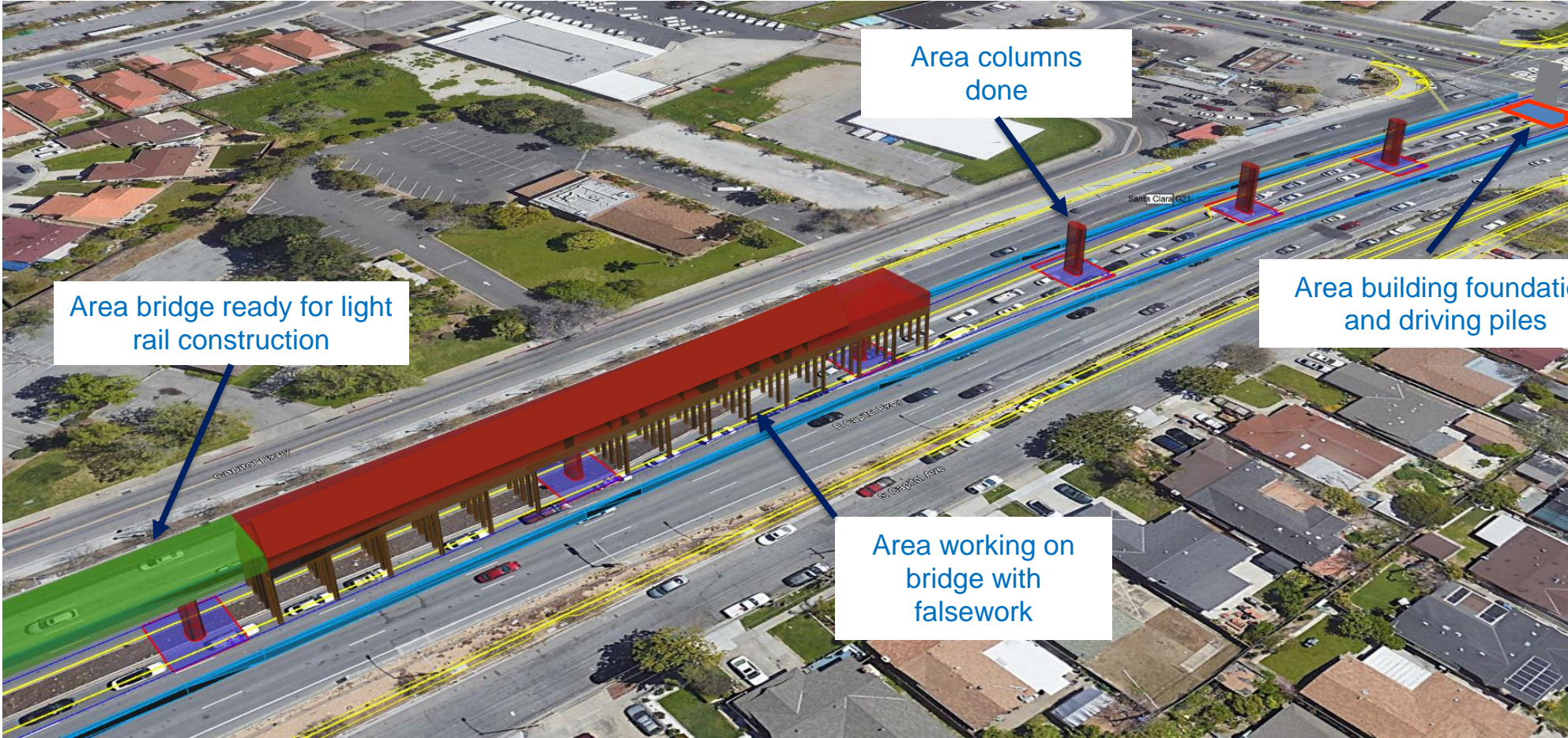


Bridge Ready for Light Rail



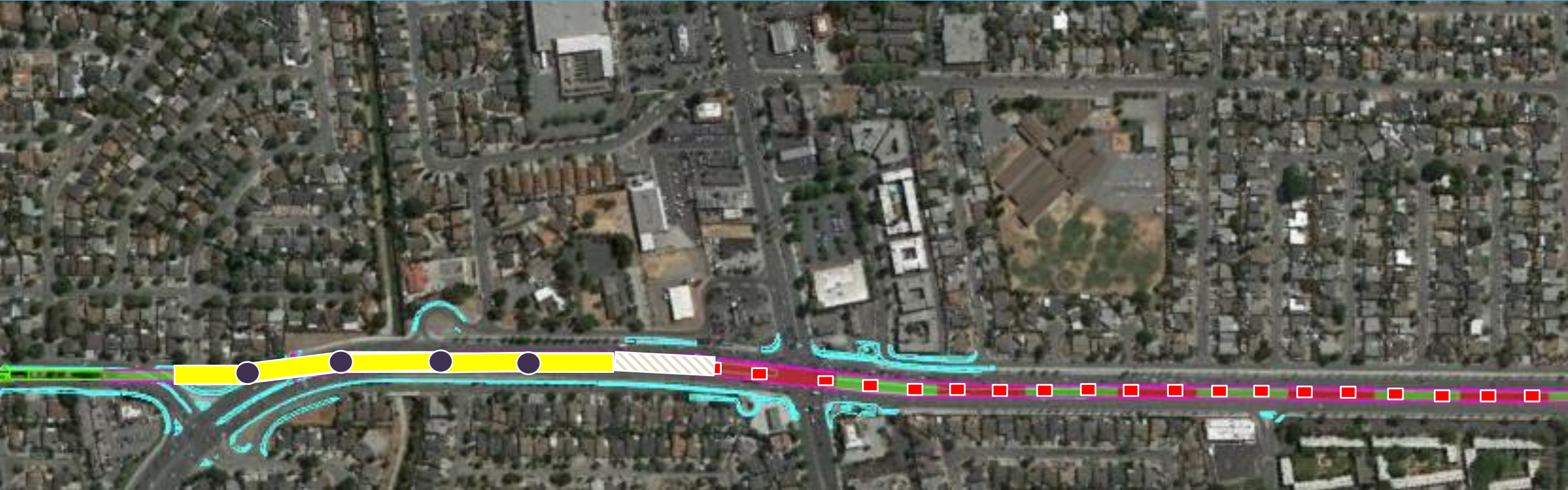
Light Rail Construction

Structure Construction



Different work happening concurrently along the expressway

Light Rail Structure Alignment

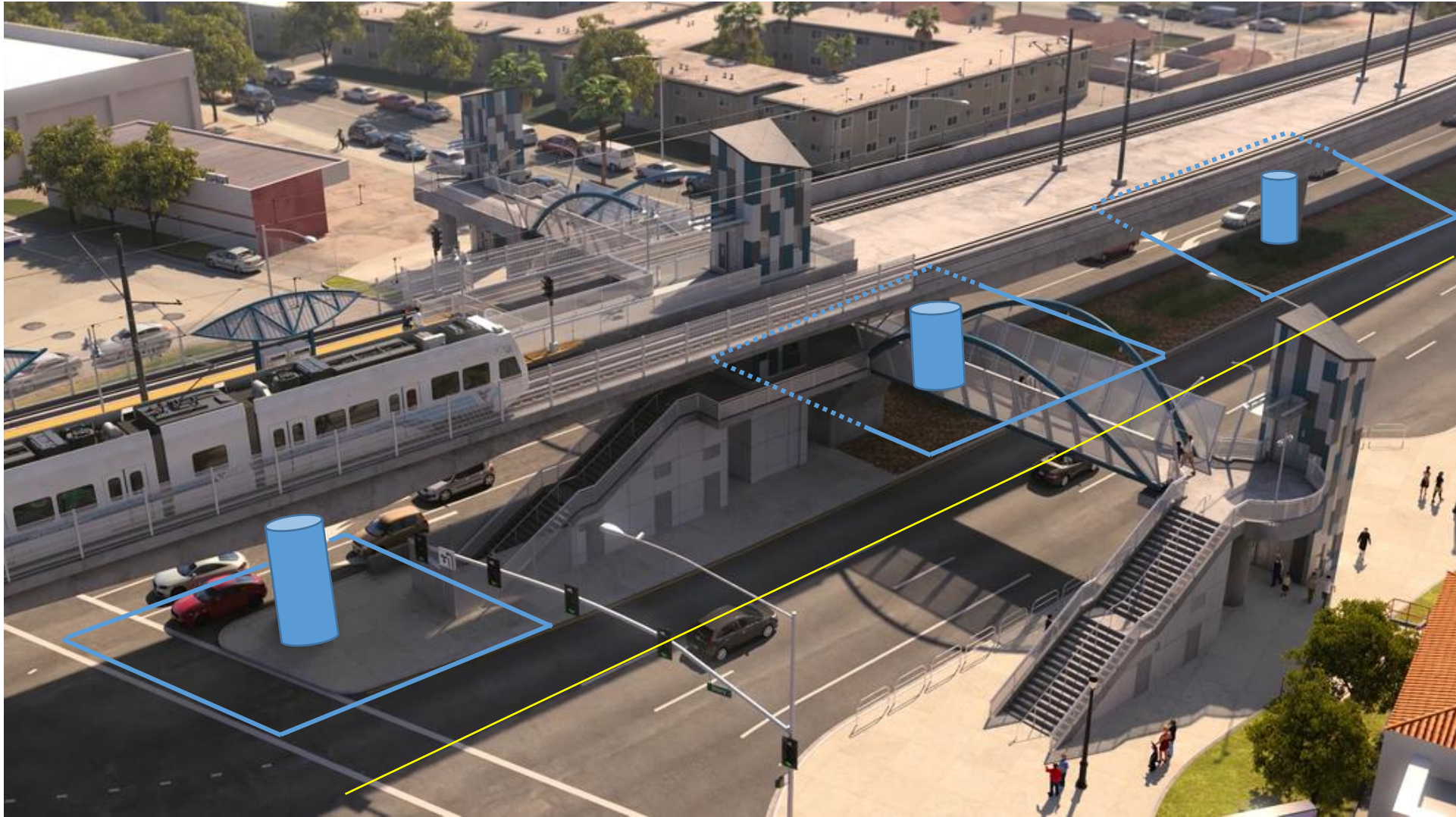


Bridge Construction Progression (wave of activity)

- Foundation (and column)
- ▨ Falsework
- Structure Concrete
- Hinge Concrete

Note: Light rail track and overhead wires begin after entire structure section complete.

Foundation Construction and Barrier



— Temporary barrier when building foundation

Falsework Under Bridge

Temporary barrier with falsework →

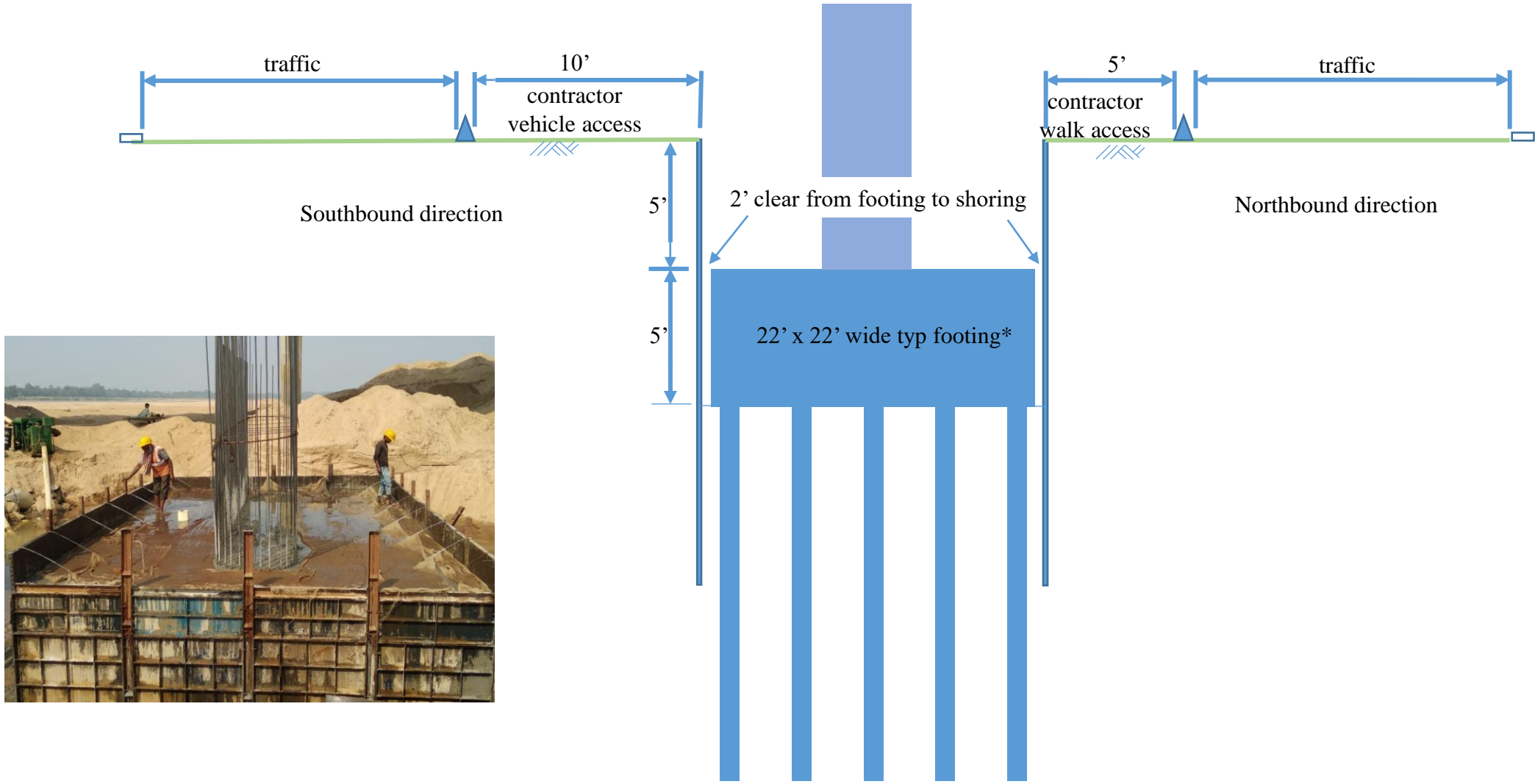


Median Barrier for Traffic Protection



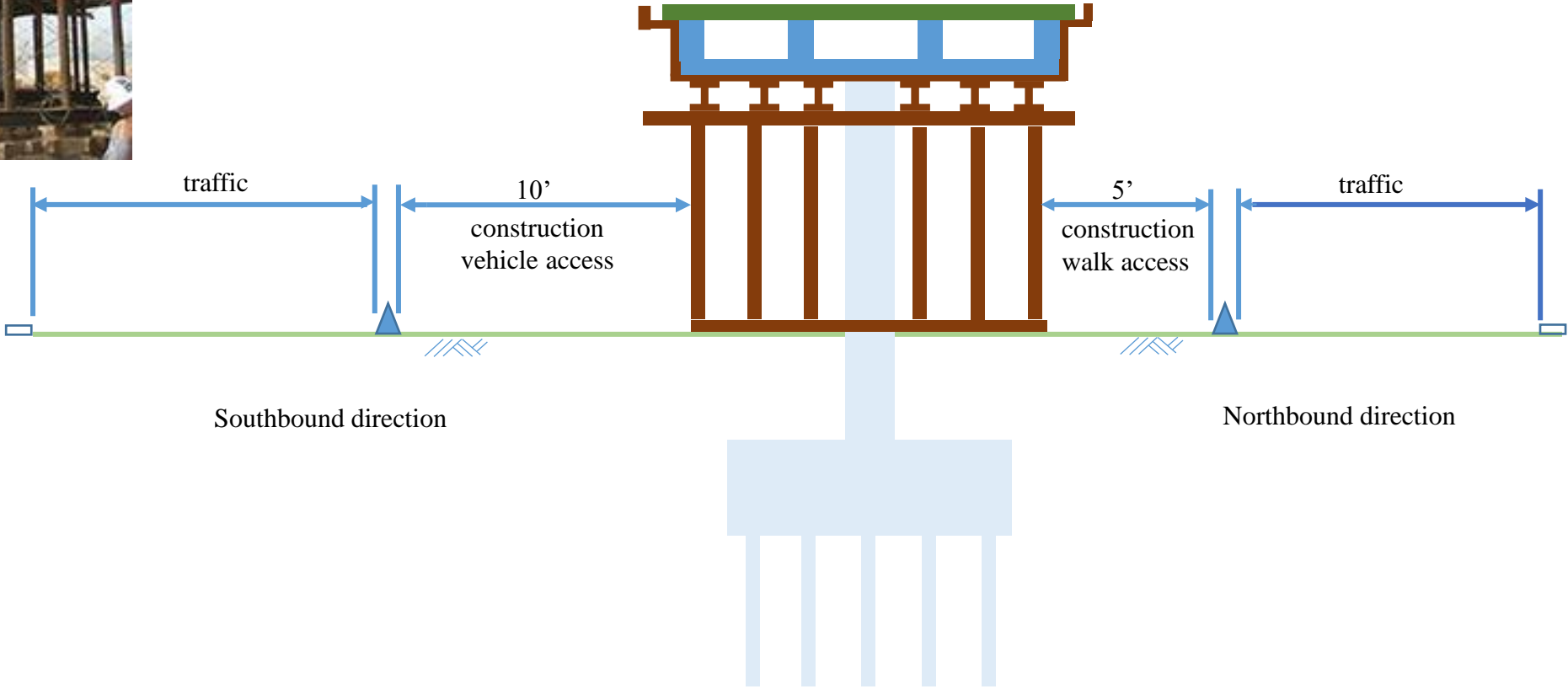
Concrete barrier placed at beginning of construction to protect open footing, pile driving, falsework, etc.

Typical clearance when building substructure looking northbound (between intersections)

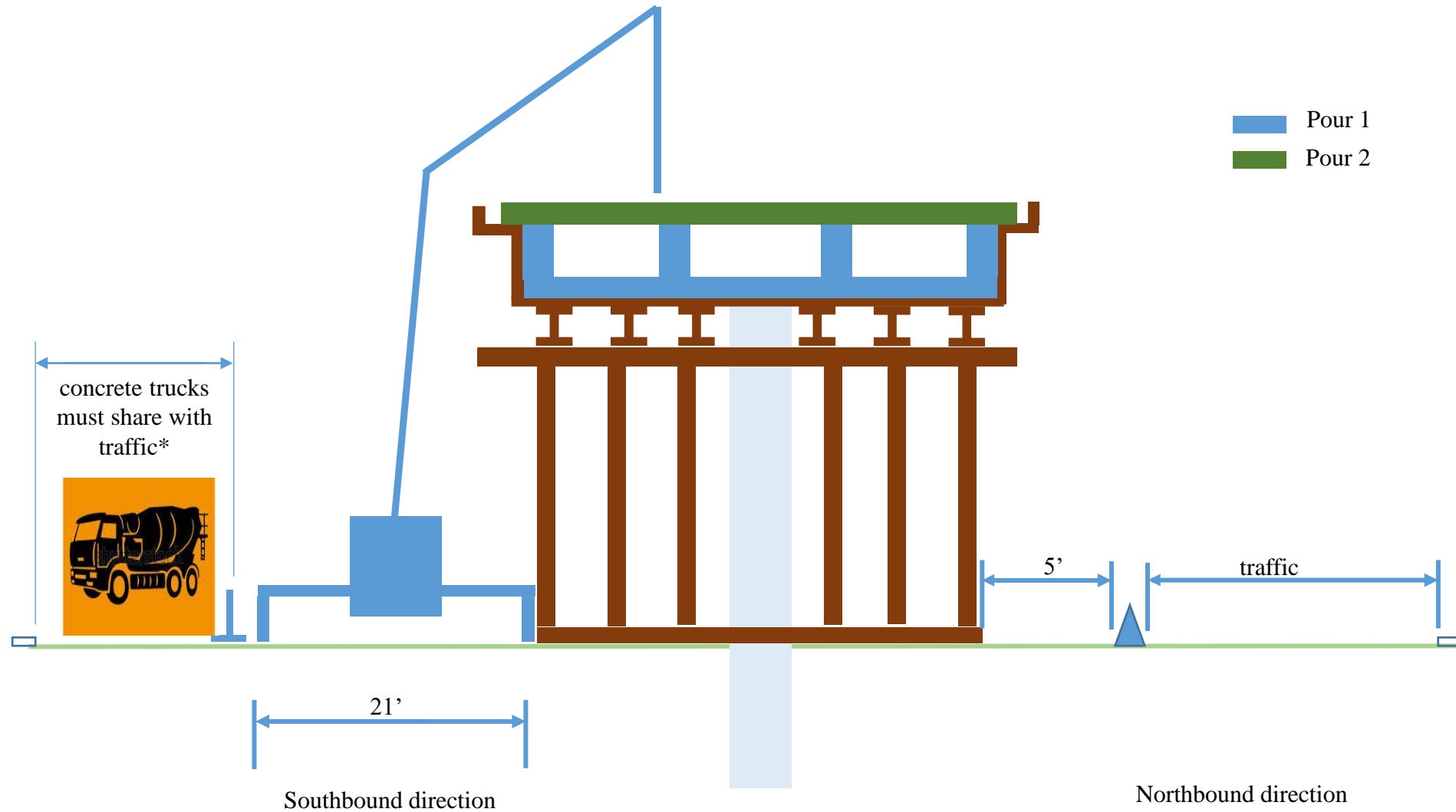


*Footing width increases when use cast in drilled hole pile (typical 5' less available space each side)

Typical clearance when falsework in place (between intersections)

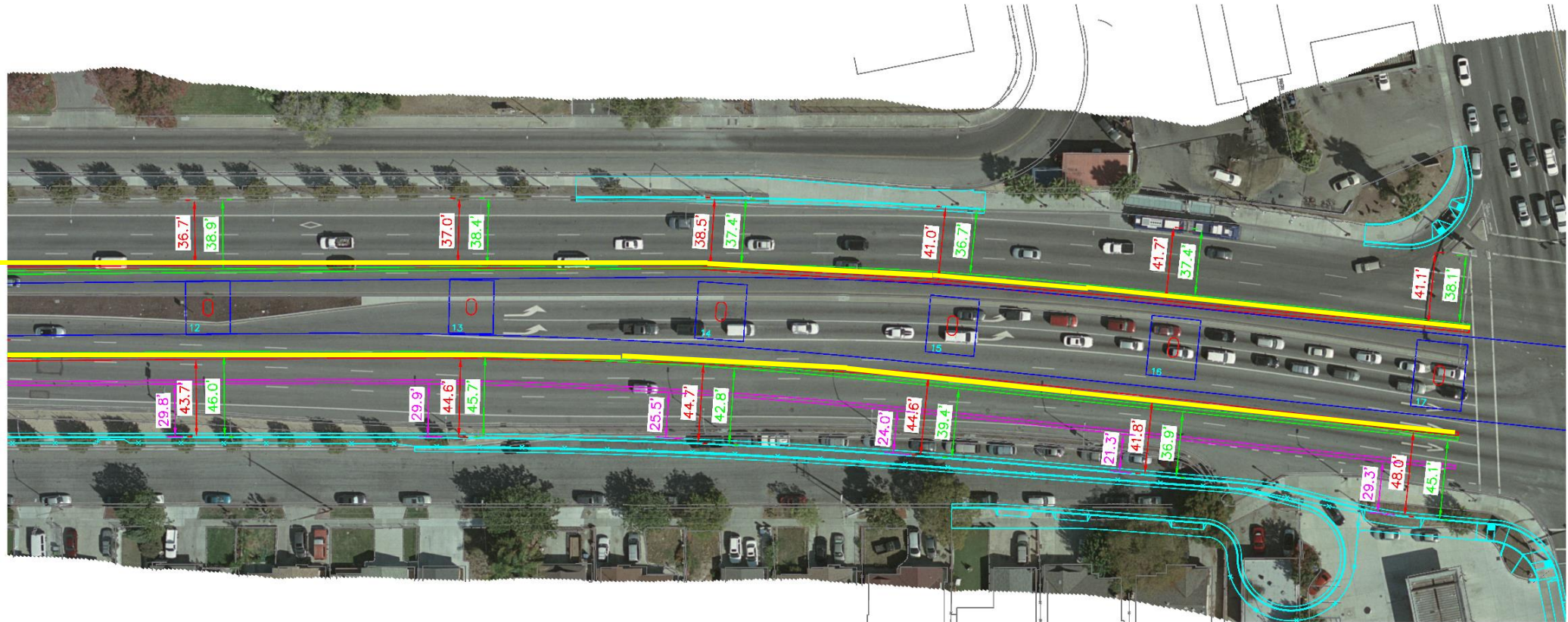


Clearance when placing superstructure concrete (between intersections)



*Concrete trucks stage in protected area and move into traffic to get past pump to pour concrete

Lane space when building structure



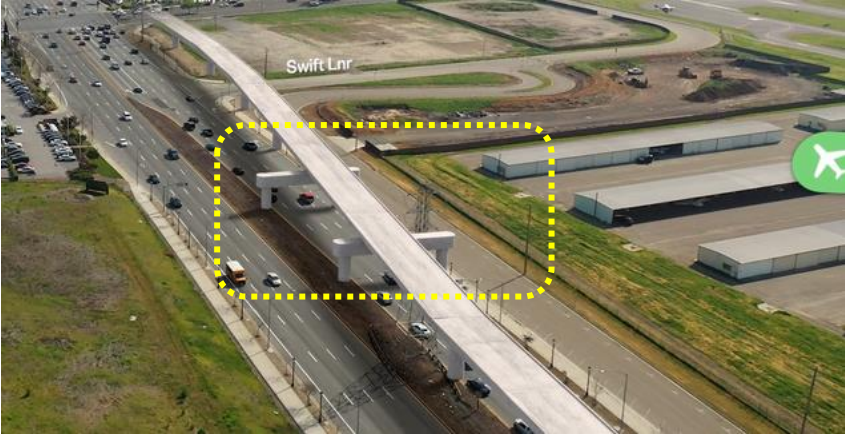
- New curb after widening
- New median curb
- Temporary barrier when building foundation and falsework
- Temporary barrier when pouring concrete

Placing Pedestrian Overcrossing

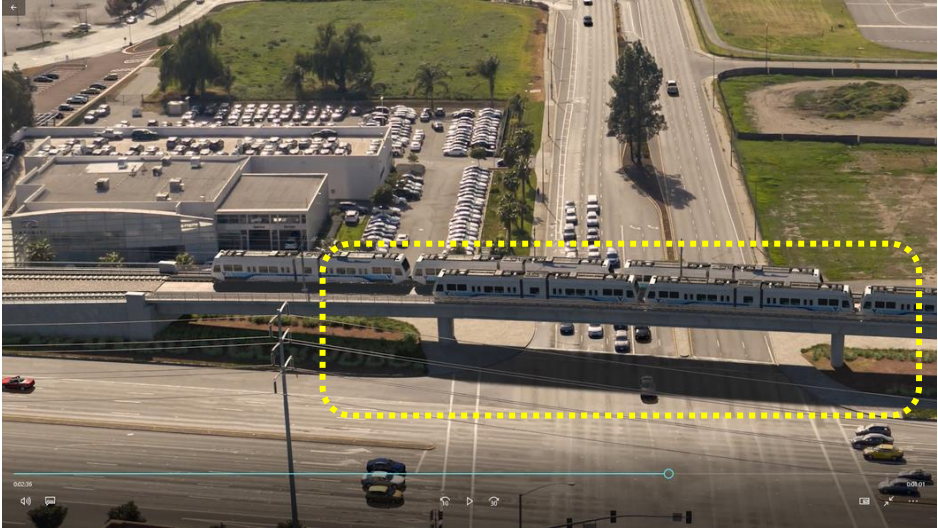


Montague Pedestrian Overcrossing in July 2020

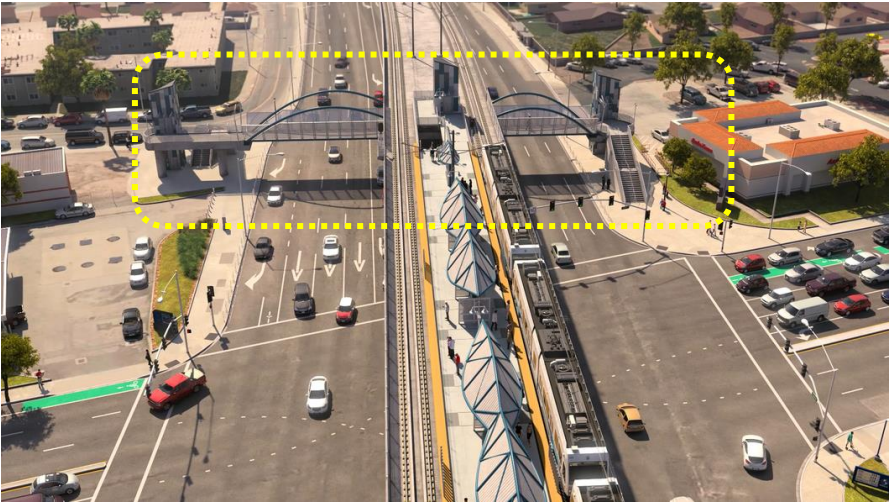
Road Closure Requirement



Placing falsework over expressway



Placing falsework over intersections



Placing pedestrian overcrossing over expressway

Open Discussion

Wrap Up

Upcoming Meetings for 2021

- VTA Board of Directors, March 4, 5:30 p.m.
- EBRC-PAB: March 17, 2021, 4:00 p.m.

Stakeholder Working Group 2021 Dates

- February 25, 2021, 6:30 p.m.
- May 27, 2021, 6:30 p.m.
- **August 26, 2021**, 6:30 p.m.
- November 18, 2021 p.m.

Information Posted www.vta.org/eastridgetobart

- Recording of webinar will be available VTA's YouTube channel and linked on the project page .

VTA Community Outreach

Kathleen Podrasky

Phone: (408) 321-5861

Email: Kathleen.Podrasky@vta.org

Phone: (408) 321-7575

Email: community.outreach@vta.org

Website: www.vta.org/eastridgetobart