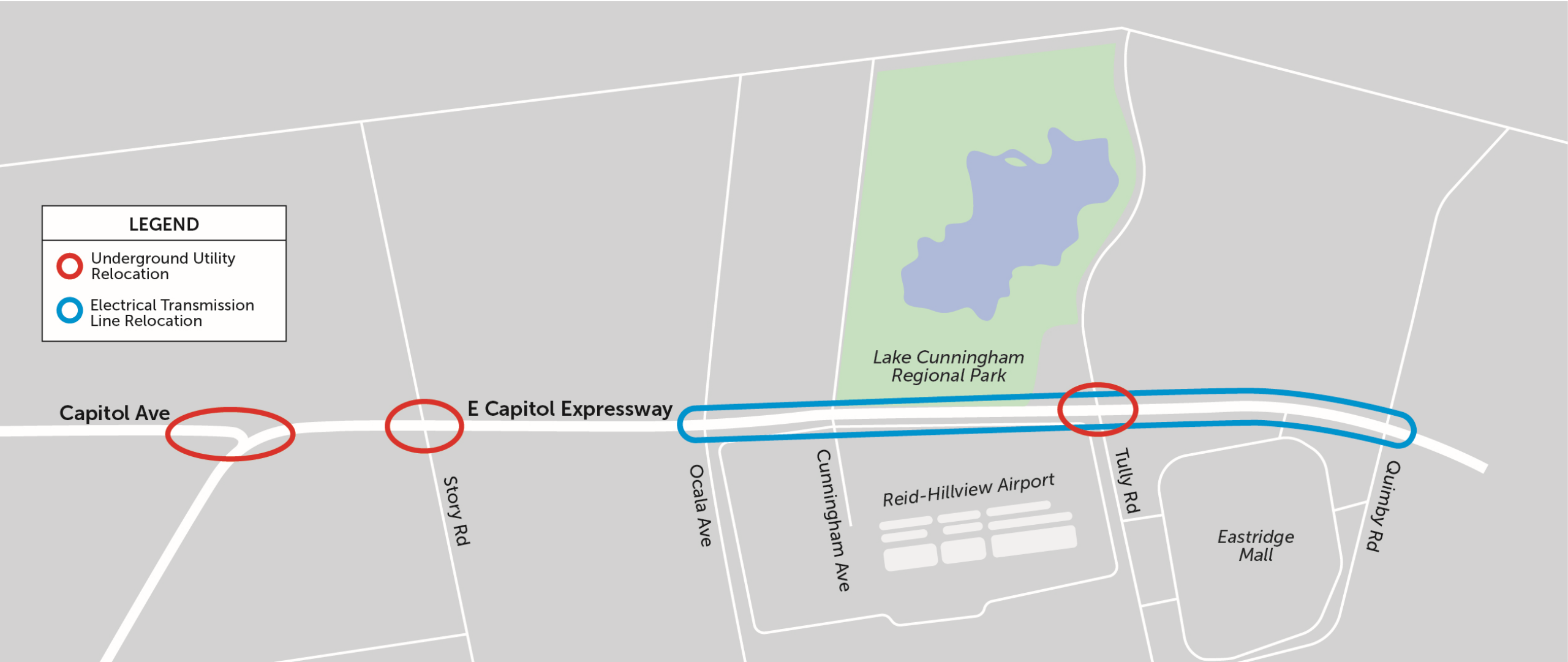


# Utility Relocation

## September 2021-February 2022

**LEGEND**

- Underground Utility Relocation
- Electrical Transmission Line Relocation



# PG&E Overhead Electrical Transmission Line Relocation

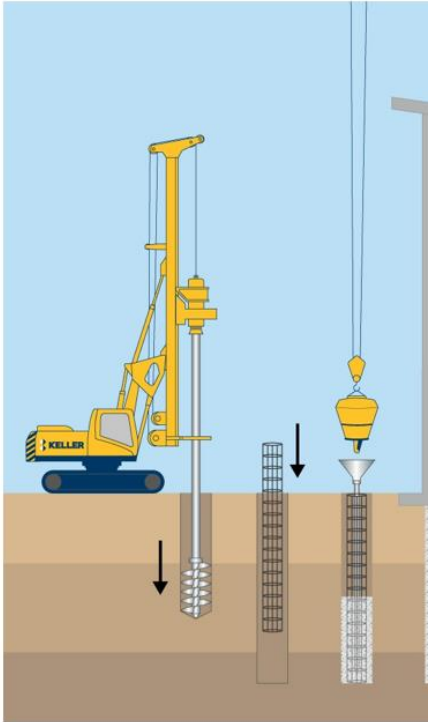


Existing Location  
With towers



New Location  
With poles

# PG&E Overhead Electric Transmission Line Relocation



Foundation Work



Drilling Auger



Tubular Steel Pole



Overhead Wires Installed

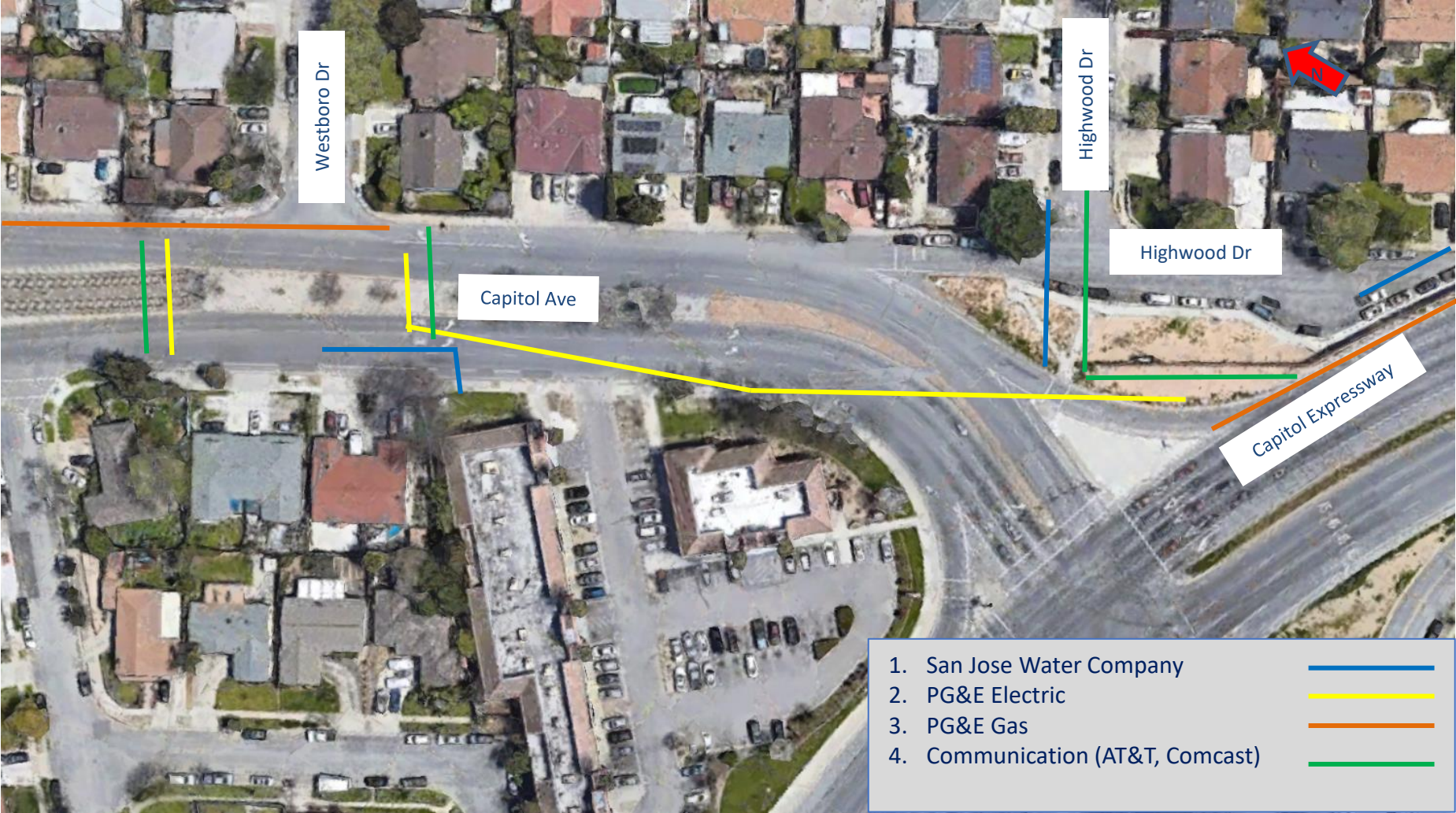
# PG&E Overhead Electric Transmission Line Relocation

---

- **General relocation steps**
  - Build new pole foundation
  - Place new poles
  - Hang new wire
  - Remove existing towers



# Underground Utility Relocation on Capitol Avenue



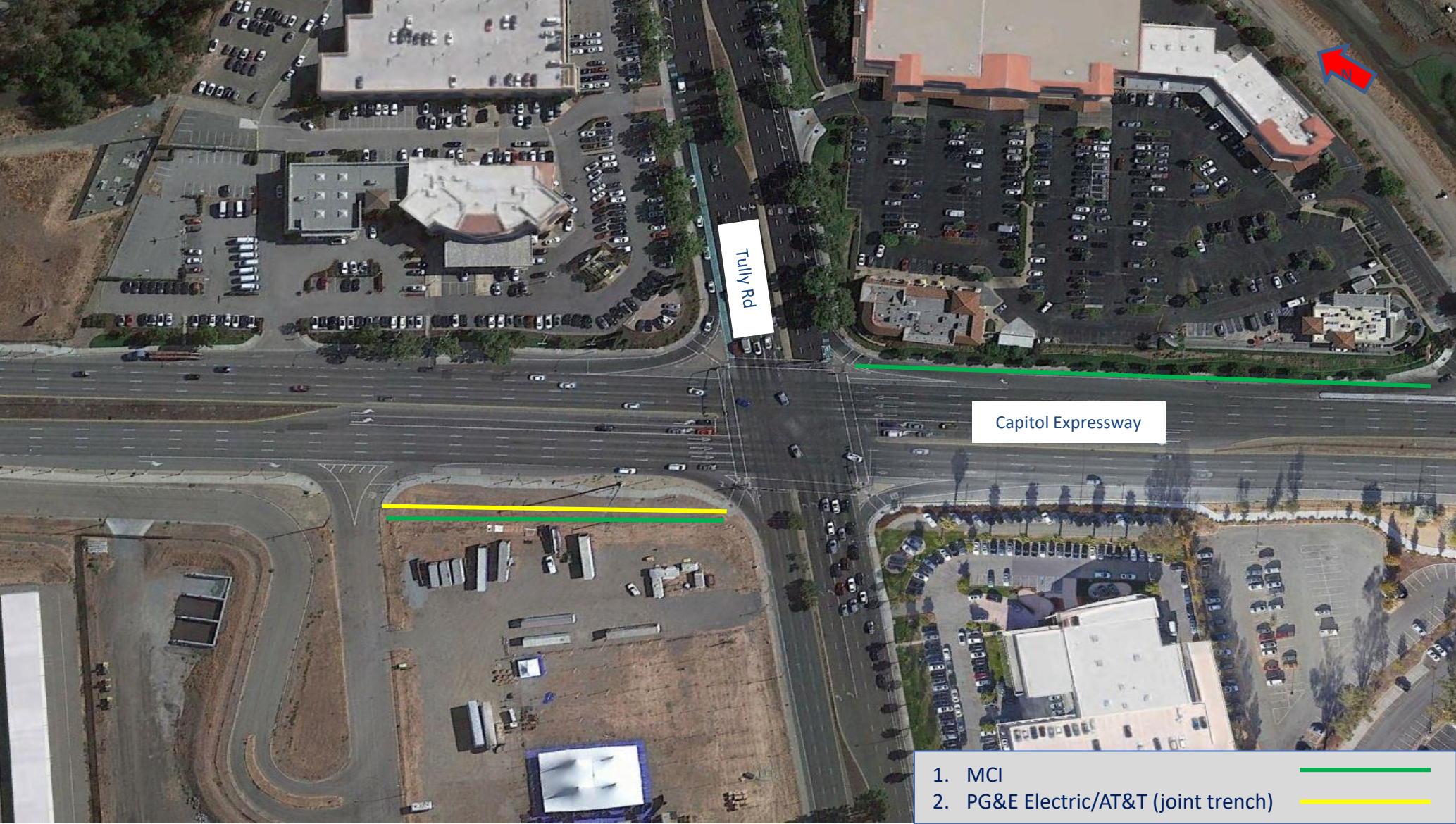


# Underground Utility Relocation at Story Road





# Underground Utility Relocation at Tully Road



- 1. MCI 
- 2. PG&E Electric/AT&T (joint trench) 



# General Utility Relocation Work



Trenching



Place Conduit



Boxes and Vaults



Pull Cable



Steel Plates



Backfill Trench



Pave Trench