



VTA's BART Silicon Valley Phase II Extension Project

Downtown-Diridon
Community Working Group Meeting

May 16th, 2023

Agenda

- Welcome & Introduction
- Phase II Update
- Project Highlight
- VTA Customer Service Center Update
- Business Resource Program Update
- Early Construction Activities
- CWG Member Report
- Next Steps

Downtown & Diridon



- Adina Levin, *Friends of Caltrain*
- Alan Williams, *Campus Community Association (Naglee Park)*
- Bert Weaver, *Delmas Park Neighborhood Association*
- Carol Austen, *Shasta / Hanchett Park Neighborhood Association*
- Charlie Faas, *San José State University*
- Chris Morrisey, *Arena Authority*
- Dana Grover, *Horace Mann Neighborhood Association*
- Derrick Seaver, *San José Chamber of Commerce*
- Edgar Arellano, *California Walks*
- Elizabeth Chien-Hale, *Downtown Residents Association*
- **Fred Buzo**, *SPUR*
- Jeffrey Buchanan, *Working Partnerships USA*
- Jim Goddard, *Sharks Sports & Entertainment*
- Larry Clark, *The Alameda Business Association*
- Nate LeBlanc, *San José Downtown Association*

Upcoming Meetings



- San José City Council Meeting: May 23, 2023
- BART Accessibility Task Force: May 25, 2023
- BART Bicycle Advisory Task Force: June 5, 2023
- Santa Clara Council Meeting: June 6, 2023
- Upcoming CWG Dates
 - Downtown-Diridon CWG Meeting: September 12, 2023
- VTA Board of Directors vta.org/about/board-and-committees
 - Board of Directors' Meeting: June 1, 2023, 5:30 PM
 - Board of Directors' Meeting: August 3, 2023, 5:30 PM
 - Board of Directors' Meeting: September 7, 2023, 5:30 PM
- Kristen will email alerts for other meetings



Phase II Update

Bernice Alaniz, VTA

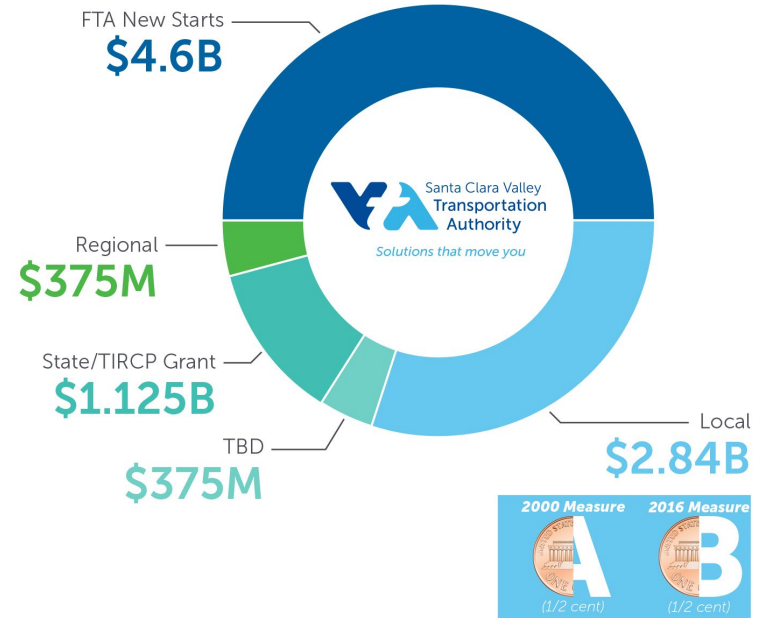
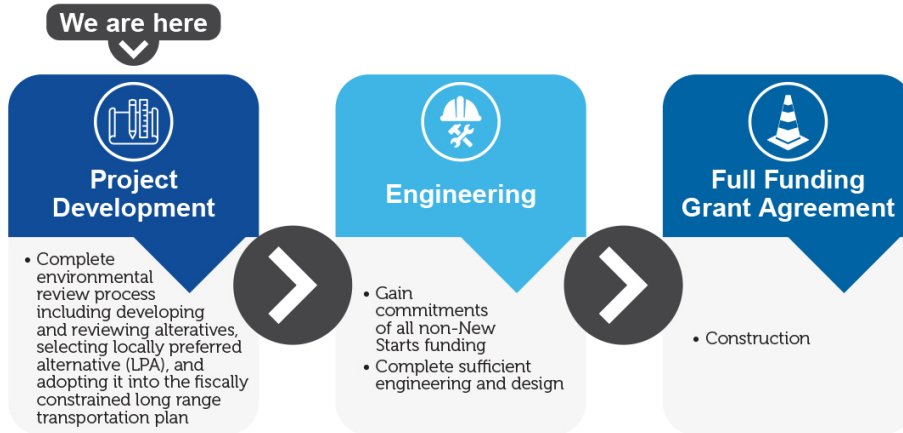
Project Update



- Completed preliminary engineering of systems, yard, and stations; initiating interdisciplinary design review process
- Presented at MTC Programming and Allocations Committee
- Ongoing coordination with BART on design development and submittal reviews
- Presenting to the Cities of San José and Santa Clara for CTMP approval



New Starts Process



Contract Packages (CP)



CP1



Systems

Delivery Method

Design-Bid-Build (DBB)

General Scope*

- Traction power
- Train control
- Communications
- Emergency ventilation systems

CP2



Tunnel & Trackwork

Delivery Method

Progressive Design-Build (PDB)

General Scope*

- Tunnel & trackwork
- Mid-tunnel facilities
- 28th Street/Little Portugal support of excavation
- Utility relocations (as required)
- Stations Support of Excavation & Connecting Adits

CP3



Newhall Yard & Santa Clara Station

Delivery Method

Design-Bid-Build (DBB)

General Scope*

- Yard & Maintenance Facility
- Line & track
- Santa Clara Station
- 500 space parking garage
- Utility relocations (as required)

CP4



Underground Stations

Delivery Method

Design-Bid-Build (DBB)

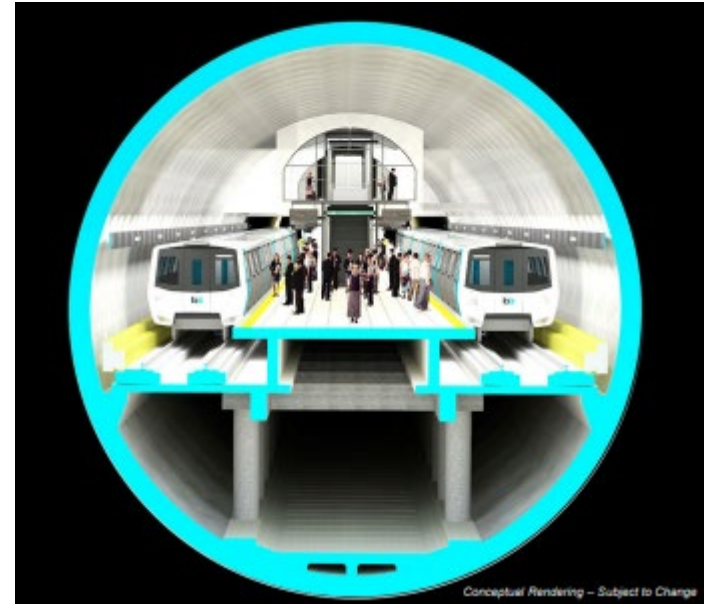
General Scope*

- 28th Street/Little Portugal, Downtown and Diridon stations
- 1,200 spaces parking (28th Street/Little Portugal Station)
- Utility relocations (as required)
- Streetscape
- Landscaping
- Finishes

Tunnel and Trackwork Contract Update



- Progressive Design-Build Delivery
- Design Professional Services ongoing; preparing preliminary engineering submittal
- Kiewit Shea Traylor (KST) advancing design and cost estimating of Early Work Packages (TBM, associated works, and West Portal)
- Negotiations of various Early Work Packages underway
- Ongoing discussions currently underway with KST for CP2 estimated cost and schedule



Procurement Look Ahead



Construction Management Services – Q2 2023



Program Management Services – Q1 2024



Construction Procurements – 2024/2025

Project Look Ahead



Based on preliminary schedule for planning purposes.

Project Description



- Excavated material from the BART Silicon Valley Phase II Project tunneling operations will be placed into various Ponds in South San Francisco Bay including Ponds A4, A8 Complex (consisting of A5, A7, A8, and A8S), A12, and/or A13.
- Placement will raise pond bottoms for the purpose of accelerating tidal marsh habitat development.

BSV Program News & In the News



- VTA named *California 2023 Owner of the Year* by Engineering News Record
- VTA attending Metropolitan Transportation Commission Owners' Night (May 16th)
- VTA attending Carabiner Event (May 18th)
- Google Downtown West (DTW) still plans to break ground in 2023
 - Remains “committed to San José for the long term and believe in the importance of the [Downtown West] development”
 - VTA, City of San José, and Google closely collaborating on schedules of BSVII and DTW



Beneficial Reuse of BSVII Tunnel Excavated Material at Former Salt Production Ponds

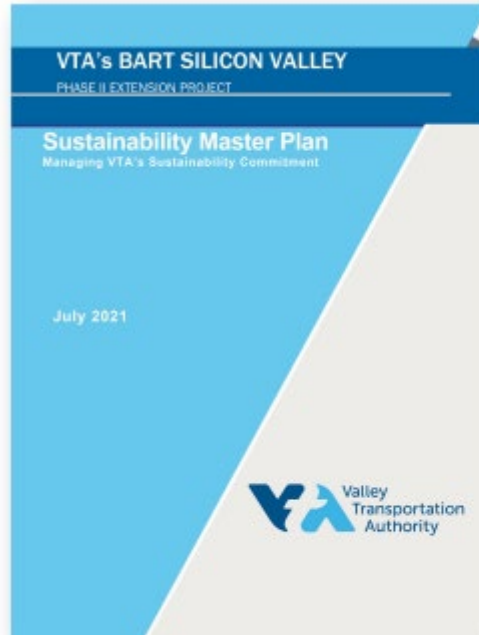
Ann Calnan, VTA

Project Benefits



- Sea level rise resilience
- Greenhouse gas emissions reductions
- Habitat creation for threatened and endangered species
- Water quality improvements
- Flood risk management
- Construction waste reuse

Envision Framework – Platinum Certification



	CRITERIA	FOCUS AREA
	QUALITY OF LIFE	PURPOSE COMMUNITY WELLBEING
	LEADERSHIP	COLLABORATION MANAGEMENT PLANNING
	RESOURCE ALLOCATION	MATERIALS ENERGY WATER
	NATURAL WORLD	SITING LAND & WATER BIODIVERSITY
	CLIMATE & RISK	EMISSIONS RESILIENCE

Current Project Activities



- Priority Project list for the Bay Restoration Regulatory Integration Team involved with permitting any work at the salt ponds
- \$1.5 million grant from the California Coastal Conservancy for environmental clearance and permitting
- Grant pre-application to the California Wildlife Conservation Board
- Development of the construction methodology to place the materials into the ponds
- Initiation of environmental technical analyses
- Ongoing community engagement

Collaborative Partners



Credit: Peter Pearsall/USFWS

- US Fish and Wildlife Service
- California Coastal Conservancy
- Valley Water
- US Army Corps of Engineers
- National Marine Fisheries Service
- California Department of Fish and Wildlife
- San Francisco Regional Water Quality Control Board



VTA Customer Service Center Update

Adriano Rothschild, VTA

VTA's Downtown Customer Service Center



- VTA examined numerous available spaces in the Downtown San José area to identify a new space that would enable VTA to best serve its customers and the public.
- VTA's Downtown Customer Service Center will be relocating to 2 N. Market Street and opening in early summer 2023

VTA's Downtown Customer Service Center



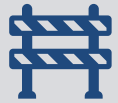
- The relocated **VTA Customer Service Center** will continue to serve the surrounding community and assist transit users with general inquiries and other important requests, including:
 - Inquiring about lost & found items
 - Picking up maps and schedules
 - Purchasing Clipper products, and
 - Applying for a Regional Transit Connection Discount Card
- VTA will also be opening a new **BSV Phase II Project Public Information Office**



Business Resource Program Update

Marcy Kamerath, VTA

Goals of Business Resource Program



Proactively prepare for and help, to the extent possible, to minimize construction related disturbances



Ensure business visibility and access during construction



Meet VTA's environmental commitments for BSVII

BRP Purpose and Small Business Definition



- Purpose of the Business Resource Program (BRP) is to support small businesses during construction
- A small business is defined as:
 - A for-profit business with up to 35 employees
 - Holds active business license
 - Not a category deemed inappropriate (liquor store, adult store, etc.)





Development of the BRP has been informed by the following efforts

- **VTA's Small Business Task Force**
- **Case studies** of business assistance by others
- **Interviews** with business resource providers
- **Survey** of small businesses in project area
- **Consultation** with other transit agencies

BRP Elements



Shop Local Marketing



Signage and Wayfinding



**Small Business Resource
Connections and Support**



Direct Financial Assistance



Shop Local Marketing (SLM)



- Branded marketing campaign to help encourage foot traffic to local businesses
- Key aspects:
 - Social media campaign and website
 - SLM signage (e.g., poster, banner)
 - Marketing assistance
 - Preferred vendor list
 - VTA pop-up events
 - Promotional

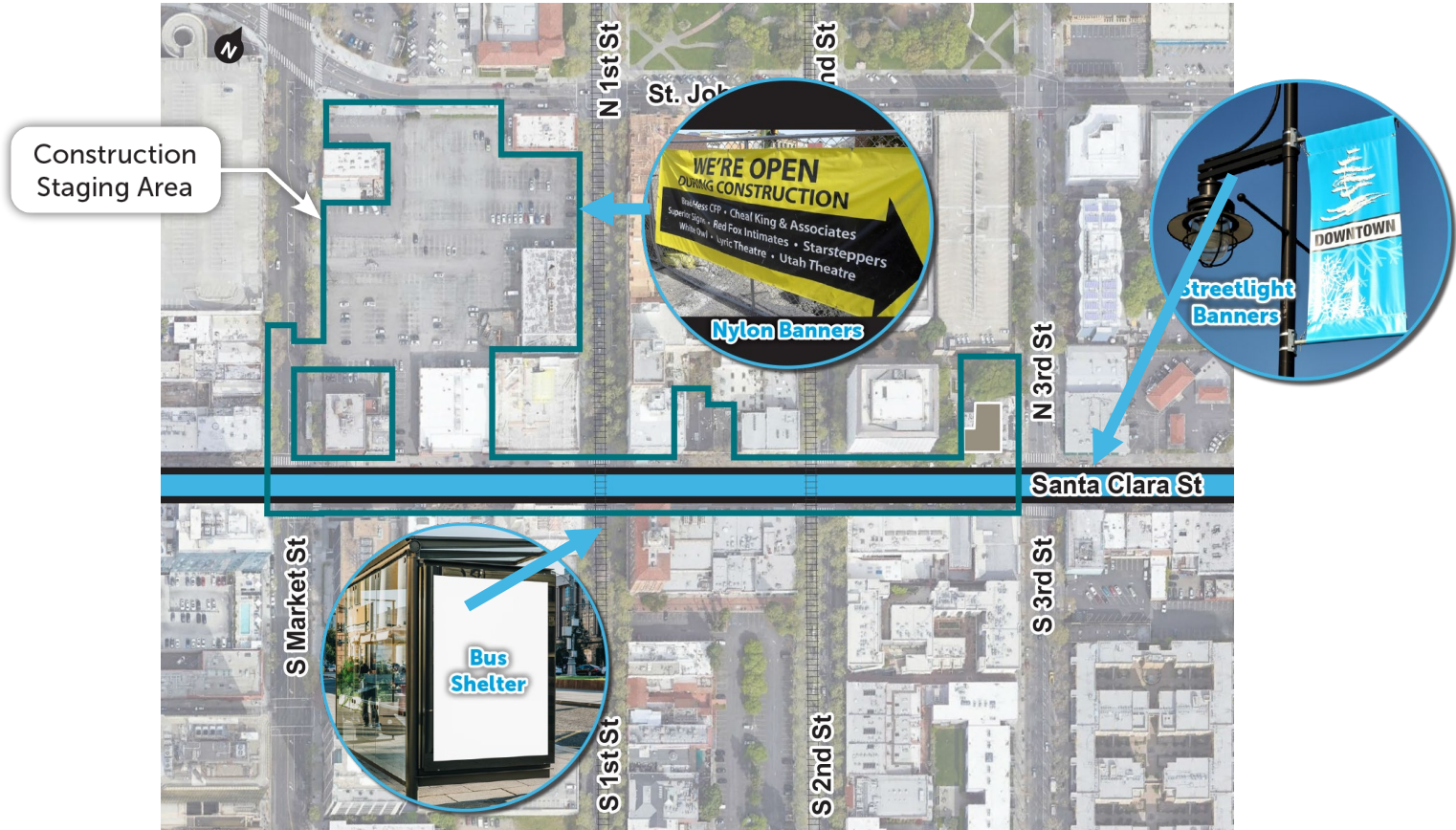
Signage and Wayfinding



- Increase visibility and awareness that businesses are open
- Encourage foot traffic
- Signage locations identified for install by Contractor and VTA



Signage and Wayfinding Example Locations



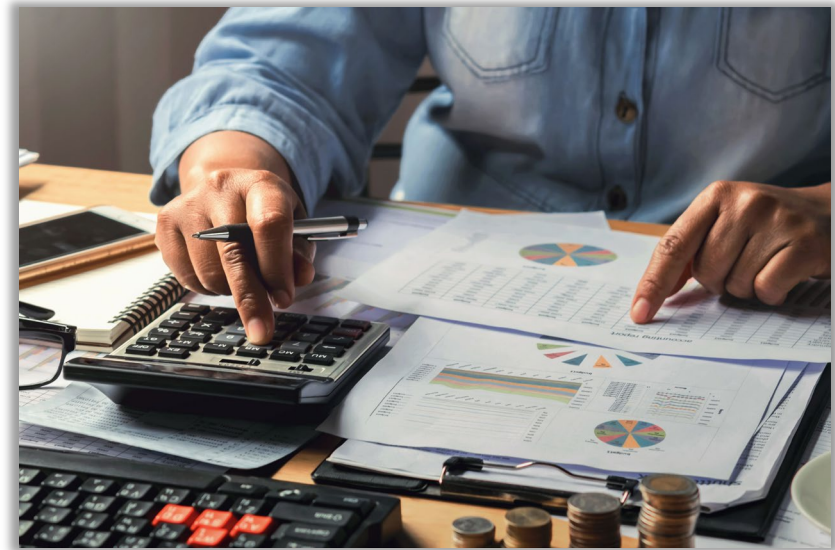
Small Business Resource Connections and Support



- Referral list of small business organizations
- VTA-sponsored open-house
- Web-based training events



Source: SCORE Business mentorship and training



Small Business Direct Financial Assistance



- Funds will be available to support eligible small businesses that meet the criteria
- Eligibility to apply:
 - Meets definition of small business
 - Adjacent to above-ground construction and staging areas (e.g., stations, portal, ventilation facilities)
 - Experiences at least 1 month of continuous disruption to access (i.e., stationary disturbances related to project construction)

Disruptions





- Tiered assistance based on at least 1 month of continuous disruption to access
 - Award amount is based on duration of disruption up to a max amount
 - Applications reviewed by VTA or third-party to verify eligibility and disruption has occurred



BRP Business Liaison Team



- Serve as a conduit between VTA and business owners
- Regularly visit businesses and foster relationships before and during construction
- Be multilingual to communicate project information and business concerns



Source: Valley Metro South Central Community Office

BRP Look Ahead



Early Construction Activities at the Stations



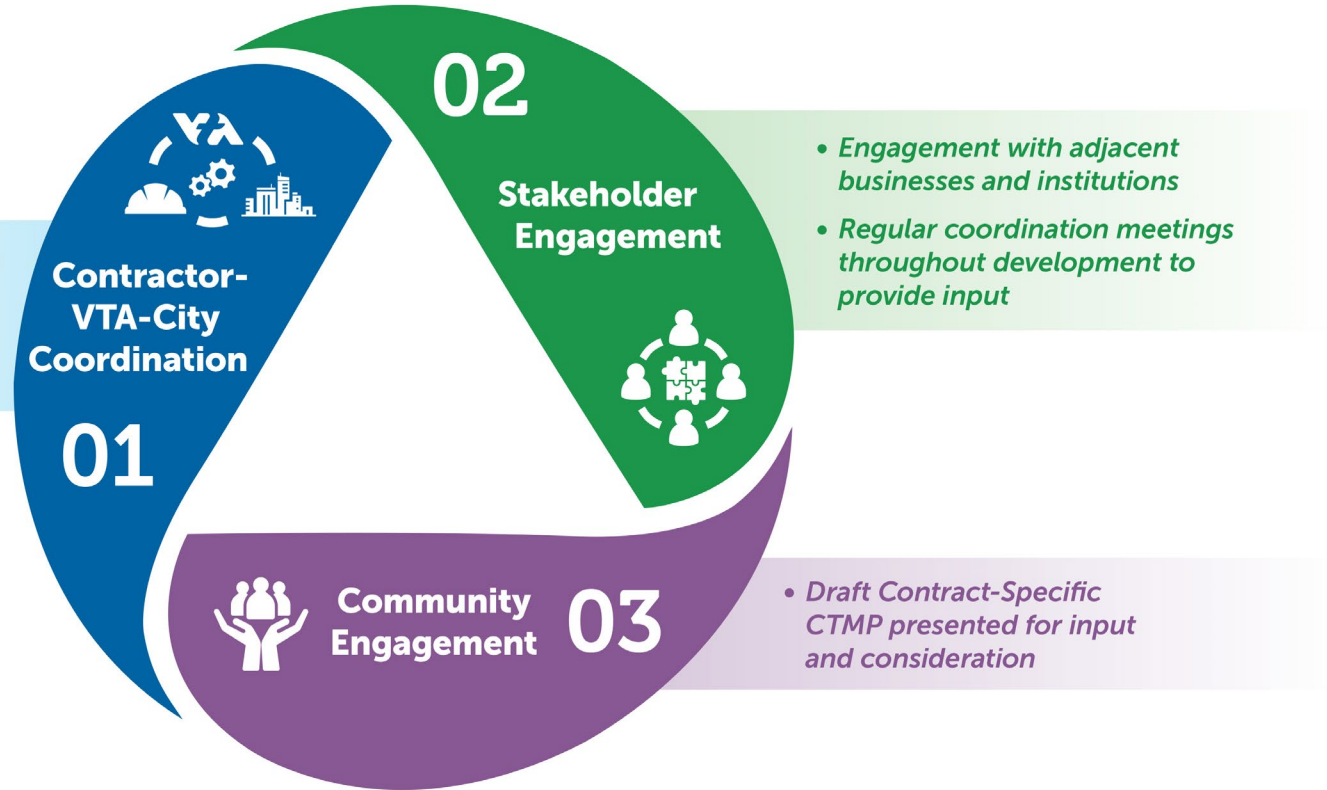
Based on preliminary schedule for planning purposes



Early Construction Activities

Erica Roecks, VTA

CP2 Specific Construction Transportation Management Plan (CTMP) Development



Early Construction Activities Public Meetings

- 3/15 In-person Public Meeting at Santa Clara University (SCU) & 3/16 Online Public Meeting via Zoom
- Connected with the general public to share information re: early construction activities at the West Portal site
- *Event Promotion Outlets:* Physical Mailers, email invites, social media promotion, website
- Attendance:
 - **54 Public Members** attended
 - **30 Questions/Comments** were addressed
- Recorded Online Presentation/Presentation PPT available on Project Website: <https://www.vta.org/programs/community-information>
- Outcome: Generally, very positive



Early Construction Outcome



Prepare the site for Tunneling Operations



Construct on-site access points,
parking, and offices



Construct & operate facilities to
produce tunnel lining



Excavate tunnel portal and
excavated materials bin

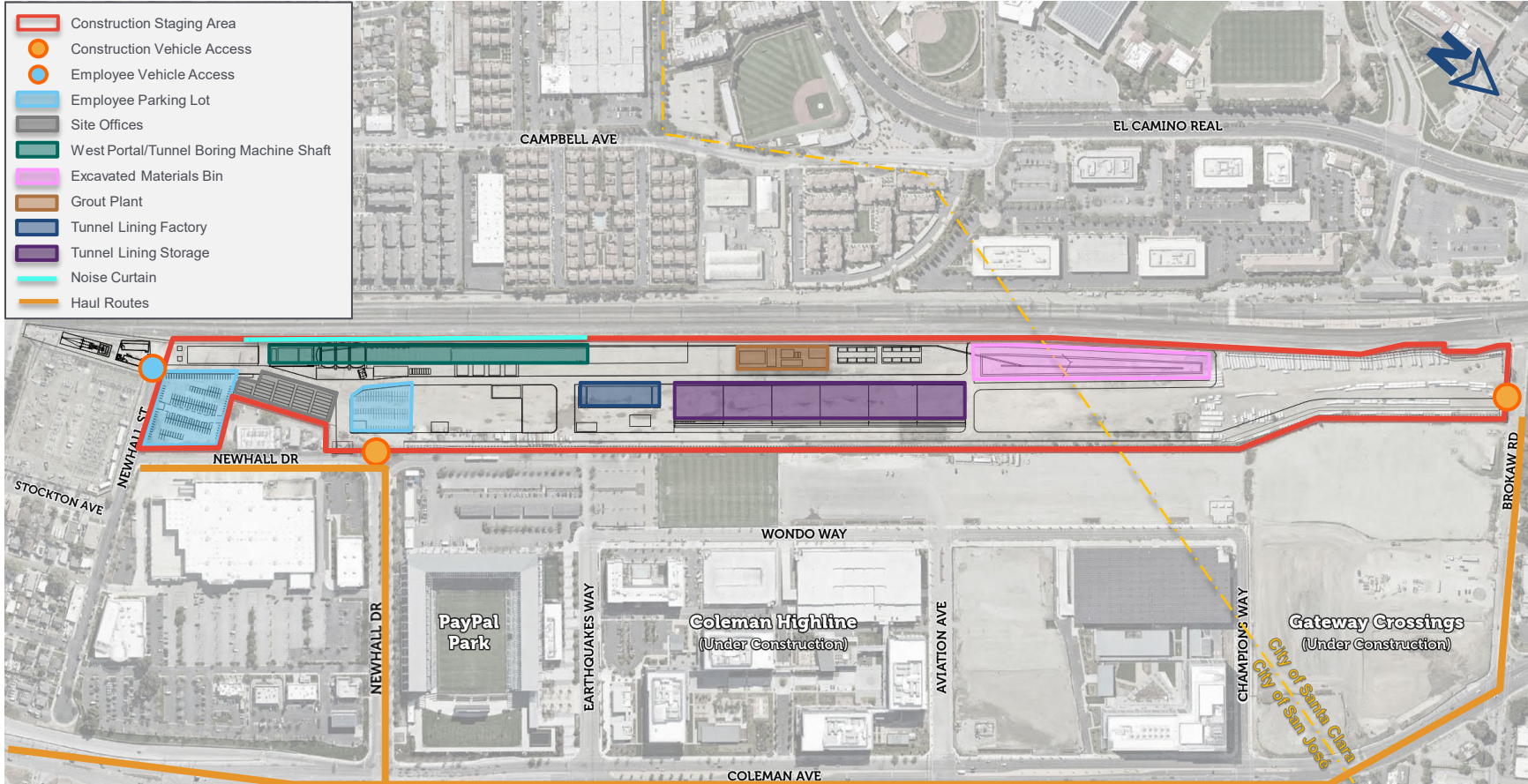


Assemble the tunnel boring
machine (TBM)

Elements to be Constructed During Early Construction



- Construction Staging Area
- Construction Vehicle Access
- Employee Vehicle Access
- Employee Parking Lot
- Site Offices
- West Portal/Tunnel Boring Machine Shaft
- Excavated Materials Bin
- Grout Plant
- Tunnel Lining Factory
- Tunnel Lining Storage
- Noise Curtain
- Haul Routes



CURRENT as of 05/16/23 – FOR DISCUSSION ONLY

Noise and Vibration Mitigations



The Project has established federal noise & vibration limits and protocols to mitigate levels beyond those limits.

Monitoring Systems

- Devices to track noise & vibration automatically and continuously
- Manual tests during peak noise & vibration-generating activities



Mitigations

- Noise curtain to protect local residences from noise
- And more related to construction equipment and operations



Example noise curtain

Site Access

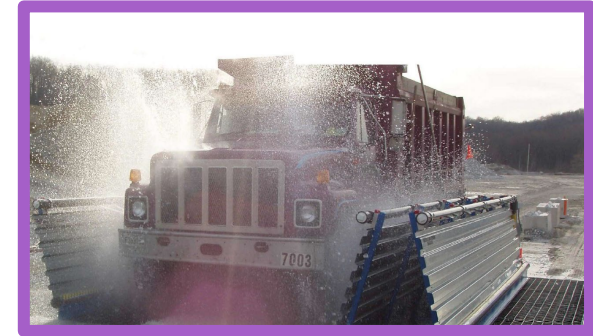


Construction Vehicle Access

- via Newhall Drive and Brokaw Road

Worker Vehicle Access

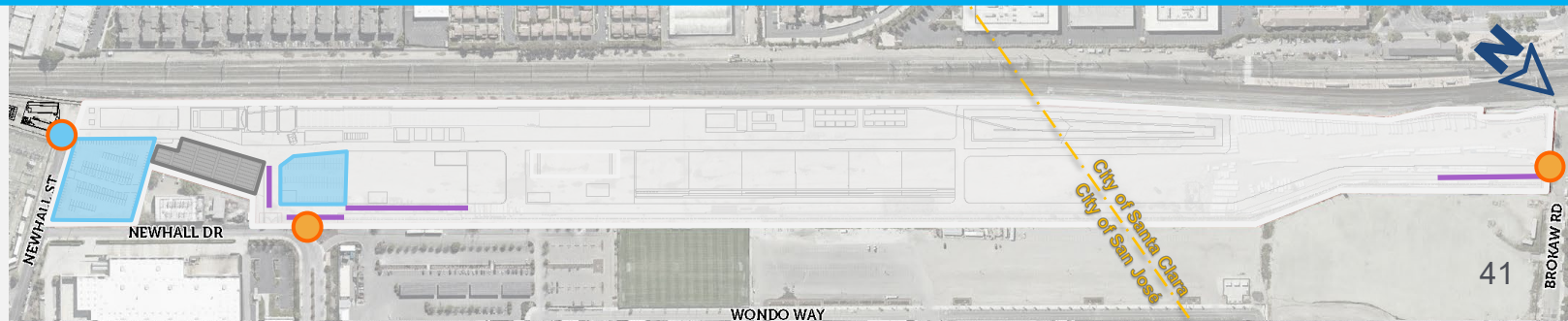
- **300** parking spaces between the two lots



Worker Facilities

- On-site offices

- Construction Vehicle Access
- Employee Vehicle Access
- Employee Parking Lot
- Site Offices
- Truck Queuing Areas



Early Construction Activities at West Portal



- ✓ Majority of construction work will be contained to the Project site limits



Project truck hauling



Construction signage



Day, nighttime, and Saturday work activities

Required Work Hours For Early Construction Activities



2023		2024			2025		
Summer	Fall	Winter	Spring	Summer	Fall	Winter	Spring
<ul style="list-style-type: none"> • Single Shift Work (6 AM-6 PM) • Saturday Work (6 AM-6 PM) 				<ul style="list-style-type: none"> • Double Shift Work (6 AM-4 <u>AM</u>) • Double Shift Hauling* (6 AM-4 <u>AM</u>) • Saturday Work (6 AM-6 PM) 			<ul style="list-style-type: none"> • Double Shift Work (6 AM-4 <u>AM</u>) • Single Shift Hauling (6 AM-4 PM) • Saturday Work (6 AM-6 PM)

Standard Work Hours	Monday – Friday	Saturdays
City of San José	7 AM – 7 PM	9 AM – 5 PM
City of Santa Clara	7 AM – 6 PM	9 AM – 6 PM

**Double shift hauling is only to occur during critical activities and is being coordinated with local stakeholders*

What to Expect: Tunnel Lining Factory Construction



Tunnel Lining Factory

- Construction of factory to produce concrete tunnel lining segments

🕒 Single Shifted Work

✓ Mitigation measures will keep noise and vibration levels in compliance

Tunnel Lining Storage

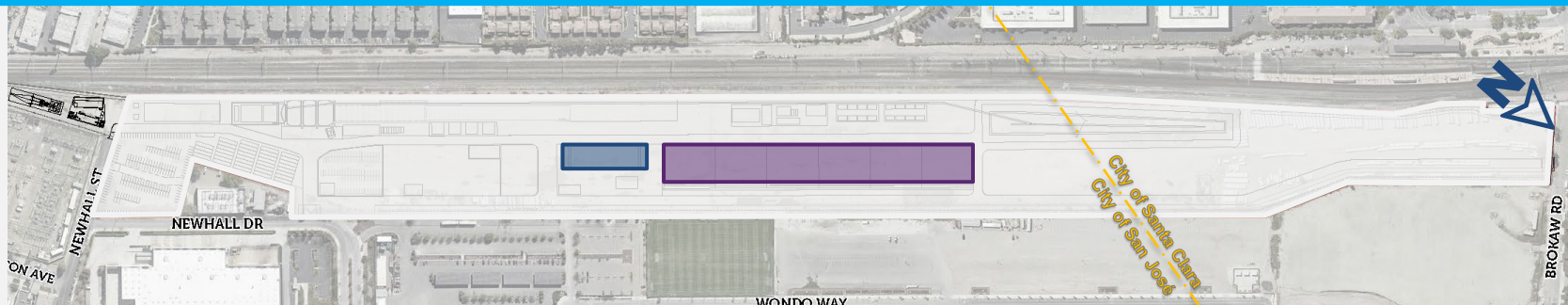
- Construction of storage area for concrete tunnel lining segments

Construction

- Work hours to construct factory: **6 AM – 6 PM**
- Anticipated construction: **Summer 2023 for 12 months**



- Tunnel Lining Factory
- Tunnel Lining Storage



What to Expect: Tunnel Lining Factory Operations



Tunnel Lining Factory

- Factory for producing concrete tunnel lining segments
- Operations contained in buildings and enclosures to significantly limit noise produced
- Double shifted work to reduce duration of activities and not impact overall schedule as tunnel lining segments are crucial to tunneling operations

Tunnel Lining Storage

- Storage of concrete tunnel lining segments

Operations



- Factory operations: **6 AM – 11 PM**
- Anticipated operations: **Fall 2024 through Major Construction**



Double Shifted Work

✓ Mitigation measures will keep noise and vibration levels in compliance



-  Tunnel Lining Factory
-  Tunnel Lining Storage



Overview of TBM Preparation



TBM Preparation

- Excavation and lining of west portal, TBM launch shaft, and excavated material bin
- Assembly of the TBM on site
- Work hours: **Double-Shift, 6 AM – 4 AM**
- Approximate Duration: **14 Months**
- Anticipated Start: **Fall 2023**

🕒 **Double Shifted Work and Hauling**

✓ **Mitigation measures will keep noise and vibration levels in compliance**



- West Portal/Tunnel
- Boring Machine Shaft
- Noise Curtain





TBM Prep: SOE Construction of TBM Shaft & Portal



Support of Excavation (SOE) Construction

- SOE creates concrete slurry walls below ground which aid excavation and creates the space for TBM assembly
- *SOE work must be double shifted work and hauling* due to the complex sequences of work required to build slurry walls
- Includes: Excavation equipment, trucks hauling concrete and excavated materials, other heavy equipment

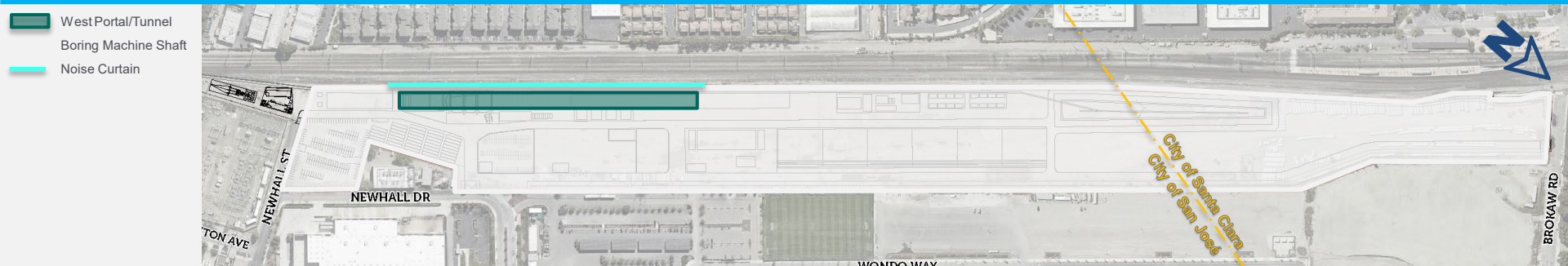
🕒 **Double Shifted Work and Hauling**

✓ **Mitigation measures will keep noise and vibration levels in compliance**



Noise Mitigations

- Select activities completed during weekdays as feasible
- Noise curtain – works to absorb noise, not reflect it
 - Reduces noise associated with SOE work
 - Minimum height of 16 ft and 750 ft long





TBM Prep: Excavated Materials Bin Construction



Excavated Materials Bin Preparation

- Construct excavated materials bin by excavating soil and installing retaining walls to create the bin
- Excavated materials bin will store soil before being hauled away
- Construction of bin is crucial to begin TBM tunneling operations
- Work hours: **Monday-Saturday, 6 AM – 6 PM**
- Anticipated Start: **Winter 2024**

🕒 Single Shifted Work

✓ Mitigation measures will keep noise and vibration levels in compliance



Excavated Materials Bin





Tunnel Boring Machine (TBM)

Assembly & Launch Preparation

- Create Launch Structure for TBM assembly and to push off from when tunneling begins
- Assembling TBM on site to prepare for tunneling
 - TBM assembly required for start of tunneling
- Double shifts required to maintain planned schedule for integration with other contracts on project

🕒 Double Shifted Work

✓ Mitigation measures will keep noise and vibration levels in compliance



West Portal/Tunnel Boring Machine Shaft



Reducing Dust



Dust Controls

- Covering or moistening trucks carrying loose materials
- Removing all visible mud/dirt on adjacent public roads
- Suspending dust-intensive activities in high winds
- Installing screening around the site



Potential screening on Project fences at Santa Clara station – Subject to Change

Reducing Artificial Light



Strategies to Reduce Light

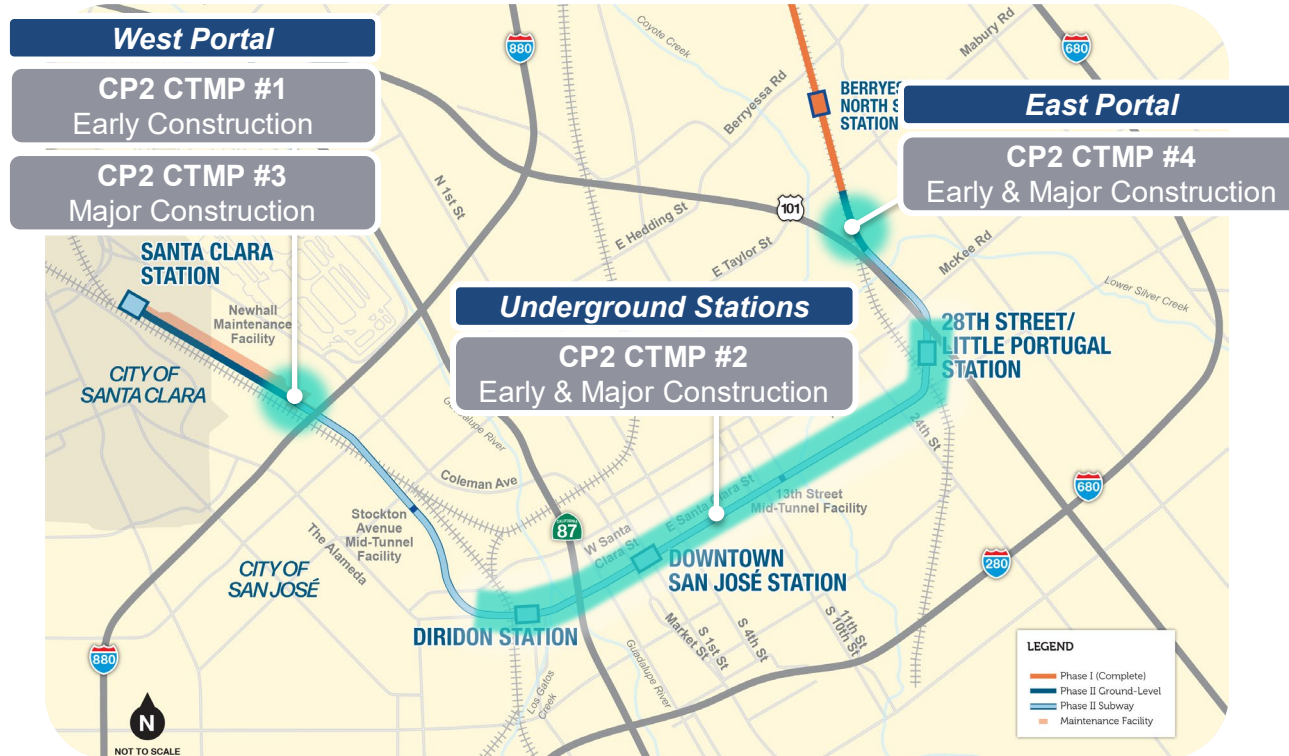
- ✓ All light will be screened/shielded and directed downward toward work activities
- ✓ Number of nighttime lights will be minimized to the extent construction safety allows
- ✓ Site lighting plan in development to implement strategies



Anticipated CP2 CTMPs by Work Area



Additional Contract Specific CTMPs will be developed and the work areas that will be covered in them will be determined as the project advances.



Temporary Replacement Parking



Diridon Station Area

Location:

501 Cinnabar St San José, CA 95110

What

- Contractors will be making improvements to the interior of the building, sidewalk in front of the building, and streetlamps along Montgomery St.

When

- As early as May 2023 – January 2024
- General working hours - 7:30AM to 4:30PM.

What To Expect

- Construction equipment on site
- periodic sidewalk closures and lane closures.



Downtown San José Construction Activity



Location:

- Downtown VTA's Parking lot, 55-A W Santa Clara St, San José, CA 95113, United States

What

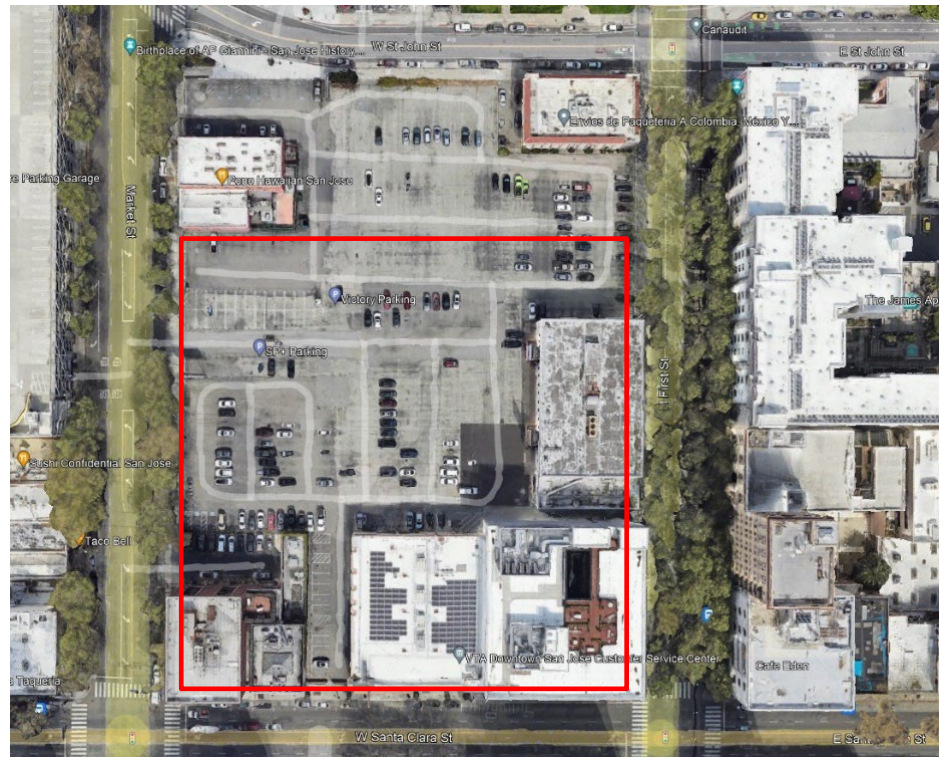
- Contractors will conduct trenching and speed bump construction activity in the VTA Block

When

- Monday 4/10 - Friday 5/19
- General working hours - 7:00 AM to 5:00 PM.
- Weekend work is not planned but possible.

What To Expect

- Trenching and speedbump construction activity will take place in the parking lot resulting in some parking stalls becoming unavailable for use.
- Operations will result in some noise as well as dust and debris creation.



 Geotechnical Work Area

Building Monitoring



The BSVII project team must perform construction-related surveys and monitoring on historic and other select properties adjacent to construction areas as an environmental clearance requirement.

Goals:

- Assess and develop a baseline of the current architectural and structural conditions
- Perform monitoring throughout construction
- Conduct post-construction surveys



Activities may include:

- General assessment / As-built verification survey
- Pre-construction survey
- Air, noise, and vibration monitoring
- Property protection instrumentation & monitoring

VTA will be reaching out to property owners as needed to gain written permission to conduct the related activities over the next two years.



Example of Vibration Monitor



Example of Noise Monitor



Example of Movement Monitoring



CWG Member Report Back

Report Back – Downtown & Diridon



- Adina Levin, *Friends of Caltrain*
- Alan Williams, *Campus Community Association (Naglee Park)*
- Bert Weaver, *Delmas Park Neighborhood Association*
- Carol Austen, *Shasta / Hanchett Park Neighborhood Association*
- Charlie Faas, *San José State University*
- Chris Morrisey, *Arena Authority*
- Dana Grover, *Horace Mann Neighborhood Association*
- Derrick Seaver, *San José Chamber of Commerce*
- Edgar Arellano, *California Walks*
- Elizabeth Chien-Hale, *Downtown Residents Association*
- **Fred Buzo**, *SPUR*
- Jeffrey Buchanan, *Working Partnerships USA*
- Jim Goddard, *Sharks Sports & Entertainment*
- Larry Clark, *The Alameda Business Association*
- Nate LeBlanc, *San José Downtown Association*

How have you been sharing information and updates on BSVII with your community?

What have you heard from your communities?

Next Steps

- Next CWG meeting:
September 12, 2023
 - Phase II Update
 - Early Construction Activities Update
 - Community Engagement Update
 - Station Area Planning