

# 2016 Measure B Update - November 2024



## LOCAL STREETS & ROADS

- No new 2016 Measure B activities in November 2024.
- Allocation through FY25: \$378M
- Expenditure through November 2024: \$224.5M



## HIGHWAY INTERCHANGES

- US101/SR 25/ Santa Teresa Blvd Extension: Selected design consultant to complete PAED phase.
- Allocation through FY25: \$436.2M
- Expenditure through November 2024: \$164.4M



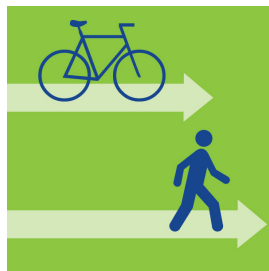
## BART PHASE II

- No new 2016 Measure B activities in November 2024.
- Allocation through FY25: \$725M
- Expenditure through November 2024: \$430.2M



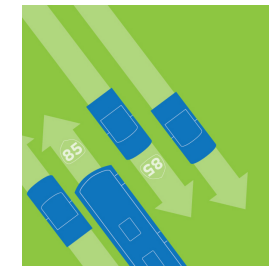
## COUNTY EXPRESSWAYS

- No new 2016 Measure B activities in November 2024.
- Allocation through FY25: \$54.3M
- Expenditure through November 2024: \$29.5M



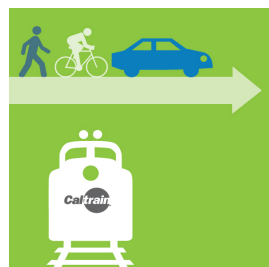
## BICYCLE & PEDESTRIAN

- Education and Encouragement: Begin review and analyze FY24 activity data.
- Allocation through FY25: \$78M
- Expenditure through November 2024: \$17.6M



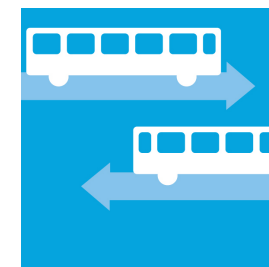
## SR 85 CORRIDOR

- No new 2016 Measure B activities in November 2024.
- Allocation through FY25: \$21.1M
- Expenditure through November 2024: \$4.3M



## CALTRAIN GRADE SEPARATION

- Continuing coordination with Caltrain and cities for ongoing projects.
- Allocation through FY25: \$178M
- Expenditure through November 2024: \$10.3M



## TRANSIT OPERATIONS

- Sold 1,500 affordable fare passes via community partners.
- Innovative Transit Service Models: VTA committees recommended updated competitive grant criteria to the Board for approval.
- Allocation through FY25: \$153.4M
- Expenditure through November 2024: \$129.9M



## CALTRAIN CORRIDOR CAPACITY IMPROVEMENTS

- Continuing collaborative work with Caltrain for ongoing projects.
- Allocation through FY25: \$42.5M
- Expenditure through November 2024: \$10.1M



## PROGRAM ADMINISTRATION

- Requested FY26/FY27 budget information from project managers for Need/Capacity-based programs.
- Allocation through FY25: \$18.7M
- Expenditure through November 2024: \$13.4M