

From: VTA Board Secretary
Sent: Tuesday, January 14, 2025 3:13 PM
To: VTA Board of Directors
Subject: EBRC Construction Update-Monday, January 13, 2025

VTA Board of Directors:

We are forwarding for your information, the Eastridge to BART Regional Connector Weekly Construction Update – January 13, 2024.

Thank you.

Office of the Board Secretary
Santa Clara Valley Transportation Authority
3331 North First Street, Building B
San Jose, CA 95134-1927
Phone **408-321-5680**



From: EBRC Construction and Engagement Team
Sent: Monday, January 13, 2025 7:16 PM
To: VTA Board Secretary
Subject: [EXTERNAL] 011425 EBRC Construction Update

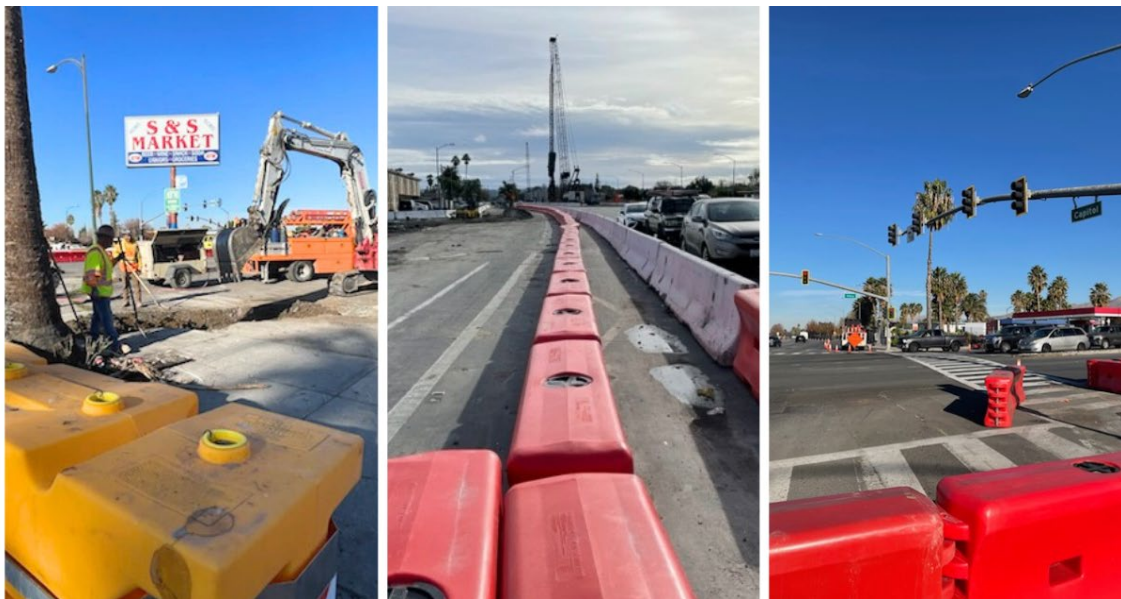
CAUTION: This Message originated from outside VTA. Do not click links or open attachments unless you recognize the sender and know the content is safe!

[View this email in your browser](#)



PROJECT UPDATE

Monday, January 14, 2025 - EBRC Weekly Construction Update



(Left to Right) – Foundation work for the elevator tower for the aerial VTA Story Road Station, close to Chevron and S&S Market. Pedestrian and bike pathways are clearly delineated throughout the construction zone. S&S Market is open during construction. [Photos VS/LFP].

Greetings,

Construction activities are gearing up in 2025 with the first of the major concrete pours for the bridge deck close to Ocala Avenue. Other construction activities are continuing near Capitol Expressway/Story Road intersection where Story Road station will be constructed.

Construction activities have intensified in the northern part of the project, with day and night work. Daywork continues in the southern part of the project near Tully and Ocala. Pedestrian paths are clearly delineated. We ask the public to respect the construction zone by not littering.

Staff members continue engaging with business owners, residents, and elected officials,

responding to their concerns, discussing mitigation as appropriate, and providing information in five languages about construction and traffic conditions.

Temporary lane closures and other modifications to traffic will continue as necessary. The project team is always seeking ways to minimize disruptions.

Safety is of utmost importance. We continue asking motorists to obey the 35-mph speed limit and appreciate the actions officers from the San Jose Police Department take in support of the EBRC Project.

Moving Forward,

The Construction and Engagement Team

 [Forward This Email to a Colleague](#)

Anticipated work through Sunday, January 20, 2025
(Partial List)

- Concrete placement for the superstructure on Capitol Expressway between Ocala Avenue and Story Road to begin on 01/14/25.
- Pile driving will take place at various locations throughout the week, but it is conducted only during the day.
- Shoring will take place at the Story BRT station located northeast of Capitol Expressway and Story Road.
- Drainage work at several locations on Capitol Expressway and Story Road.
- Several construction activities will continue at S. Capitol Avenue between Excalibur and Story until complete.

- Irrigation work, potholing, and other construction activities will occur on Capitol Expressway and Tully Road.

- Pile driving will continue the west side of Capitol Expressway north of Tully Road.

Community Outreach

- We have been very busy responding to business owners and residents. To inform tenants at apartments near Story Road of upcoming construction activities, flyers were delivered.
- The public is welcome to visit our community outreach office located within the construction Zone. The Community Outreach Field Office is open on Tuesdays from 9:00 a.m. to 12:00 p.m., Fridays from 1:00 p.m. to 5:00 p.m., and by appointment.
- For questions or concerns, the public can contact the Community Outreach Office by calling (408) 321-7575 or via email at community.outreach@vta.org



Copyright © 2025 Valley Transportation Authority, All rights reserved.

You are receiving this email from the ERBC Construction and Engagement Team.

Our mailing address is:

Valley Transportation Authority
3331 N 1st St
San Jose, CA 95134

[Add us to your address book](#)

Want to change how you receive these emails?
You can [update your preferences](#) or [unsubscribe from this list](#).



Copyright © 2025 Valley Transportation Authority, All rights reserved.
You are receiving this email from the ERBC Construction and Engagement Team.

Our mailing address is:
Valley Transportation Authority
3331 N 1st St
San Jose, CA 95134

[Add us to your address book](#)

Want to change how you receive these emails?
You can [update your preferences](#) or [unsubscribe from this list](#).