

Ocala Station



Station requires realignment of Capitol Expressway with property acquisition from the County of Santa Clara

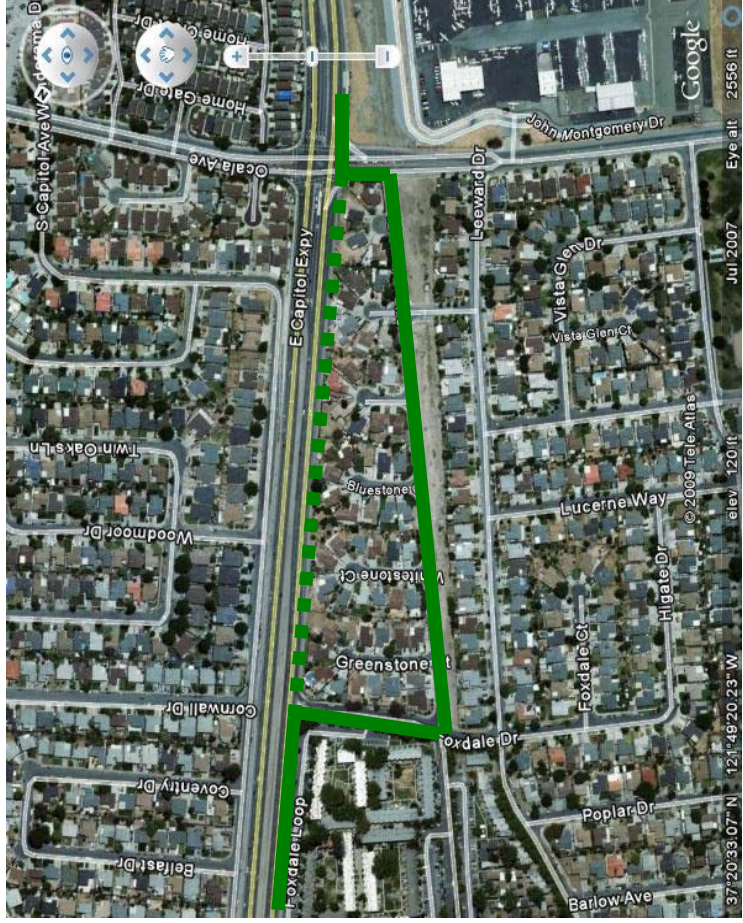
Exhibit A

Capitol Expressway Light Rail Project

Wide Sidewalk at Ocala Avenue



Relocated soundwall



Alternate pedestrian access parallel to expressway along the Silver Creek Trail.

Relocated soundwall required to expand existing sidewalk to include wide sidewalk with landscape buffer.

Exhibit B

Capitol Expressway Light Rail Project

EXHIBIT C

Eastridge Transit Center



Basic Layout with Light Rail Improvements

