

# **Appendix C**

SVRTP Alternative Plan and Profiles



APPENDIX C  
SILICON VALLEY RAPID TRANSIT PROJECT ALTERNATIVE  
PRELIMINARY ENGINEERING PLANS AND PROFILES  
INDEX OF DRAWINGS

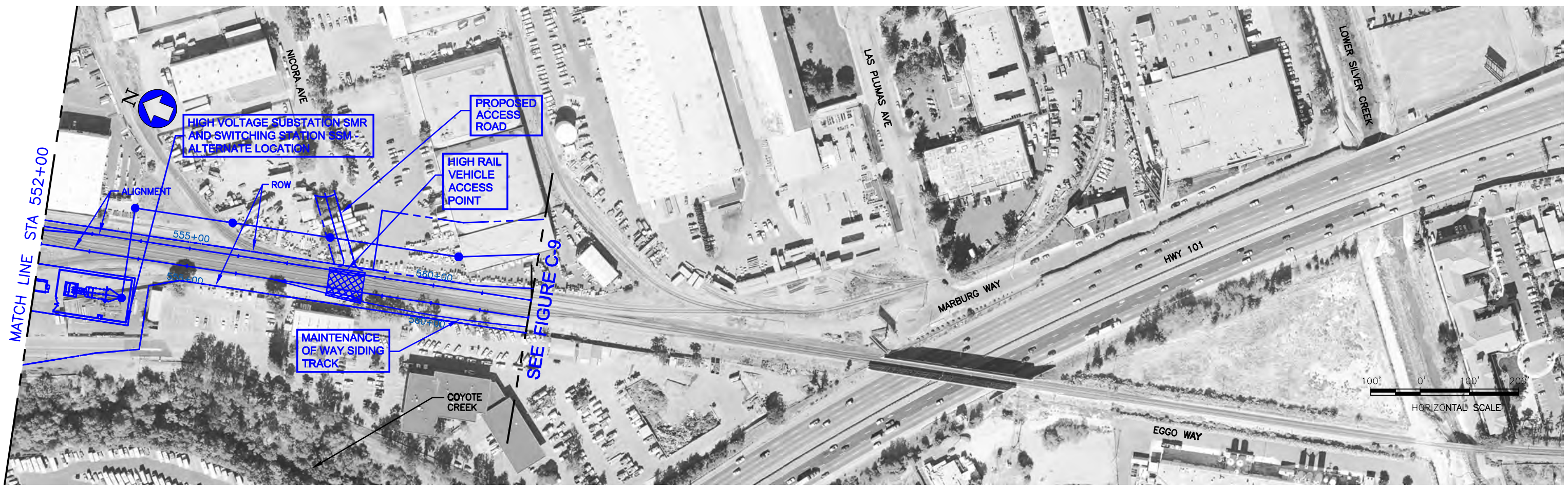
FIG NO.	TITLE	FIG NO.	TITLE	FIG NO.	TITLE
C-1	INDEX OF DRAWINGS	C-10	Plan and Profile, Sheet 2, STA 590+00 to 615+00	C-19	Plan and Profile, Sheet 7, STA 735+00 to 765+00
C-2	Berryessa Station North Option, Sheet 1 of 3, STA 492+00 to 522+00	C-11	Plan and Profile, Sheet 3A, Coyote Creek Southern Offset Option, STA 615+00 to 645+00	C-20	Plan and Profile, Sheet 8, STA 765+00 to 795+00
C-3	Berryessa Station North Option, Sheet 2 of 3, STA 522+00 to 552+00	C-12	Plan and Profile, Sheet 3B, Coyote Creek Northern Offset Option, STA 615+00 to 645+00	C-21	Plan and Profile, Sheet 9, STA 795+00 to 825+00
C-4	Berryessa Station North Option, Sheet 3 of 3, STA 552+00 to 562+00	C-13	Plan and Profile, Sheet 3C, Coyote Creek Centerline Santa Clara St. Option, STA 615+00 to 645+00	C-22	Plan and Profile, Sheet 10, West Portal, STA 825+00 to 846+00
C-5	Berryessa Station South Option, Sheet 1 of 3, STA 492+00 to 522+00	C-14	Plan and Profile, Sheet 4A, Coyote Creek Southern Offset Option, STA 645+00 to 675+00	C-23	Site Plan, High Voltage Substation SNH, Traction Power Substation SNS and Train Control House S82
C-6	Berryessa Station South Option, Sheet 2 of 3, STA 522+00 to 552+00	C-15	Plan and Profile, Sheet 4B, Coyote Creek Northern Offset Option, STA 645+00 to 675+00	C-24	Plan and Profile, STA 841+00 to 870+00
C-7	Berryessa Station North Option, Sheet 3 of 3, STA 552+00 to 562+00	C-16	Plan and Profile, Sheet 4C, Coyote Creek Centerline Santa Clara St. Option, STA 645+00 to 675+00	C-25	Plan and Profile, STA 870+00 to 898+00
C-8	Berryessa Station North and South Option, 115 KV Line Location, Mabury High Voltage Substation	C-17	Plan and Profile, Sheet 5, STA 675+00 to 705+00	C-26	Newhall Yard Maintenance Facility Layout
C-9	Plan and Profile, Sheet 1, STA 560+00 to 590+00	C-18	Plan and Profile, Sheet 6, STA 705+00 to 735+00		



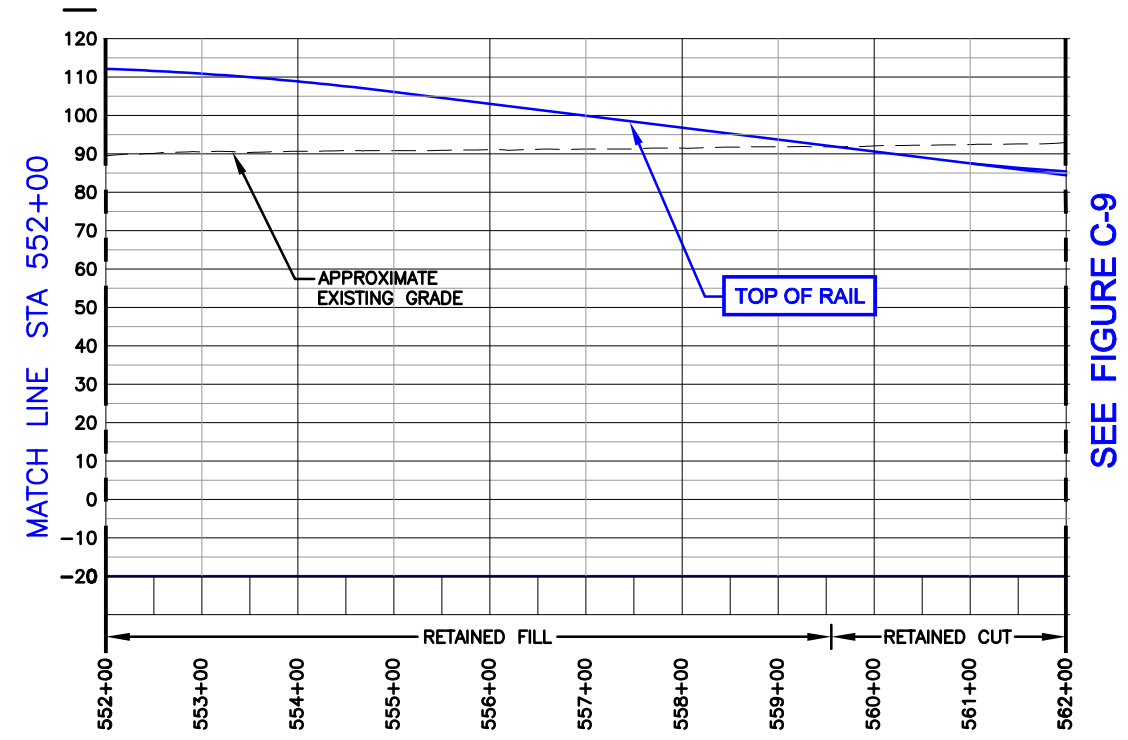




username  
dateandtime  
dwgname

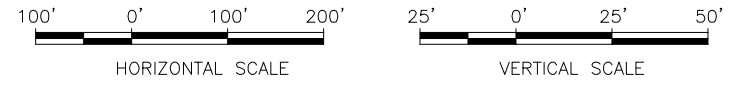


PLAN



PROFILE

DRAWING IS SCHEMATIC AND FOR ALIGNMENT COMPARISON PURPOSES ONLY.



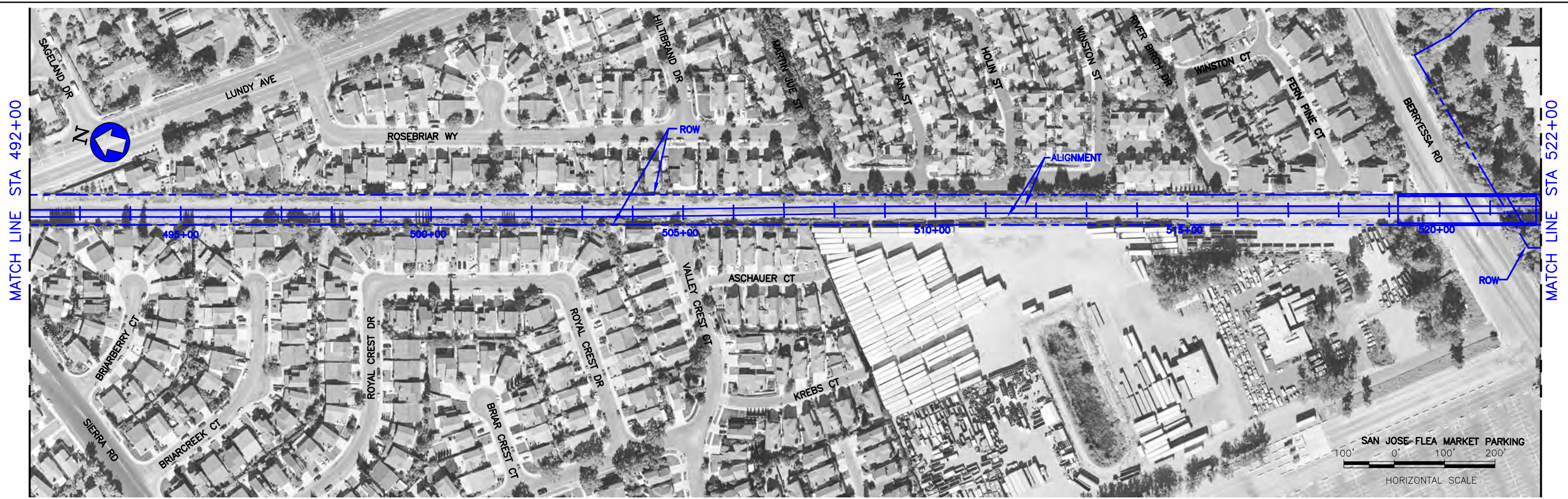
- LEGEND**
- PROPOSED PRELIMINARY ENGINEERING ALIGNMENT
  - UPRR FREIGHT TRACK RELOCATION

**SVRTP ALTERNATIVE**

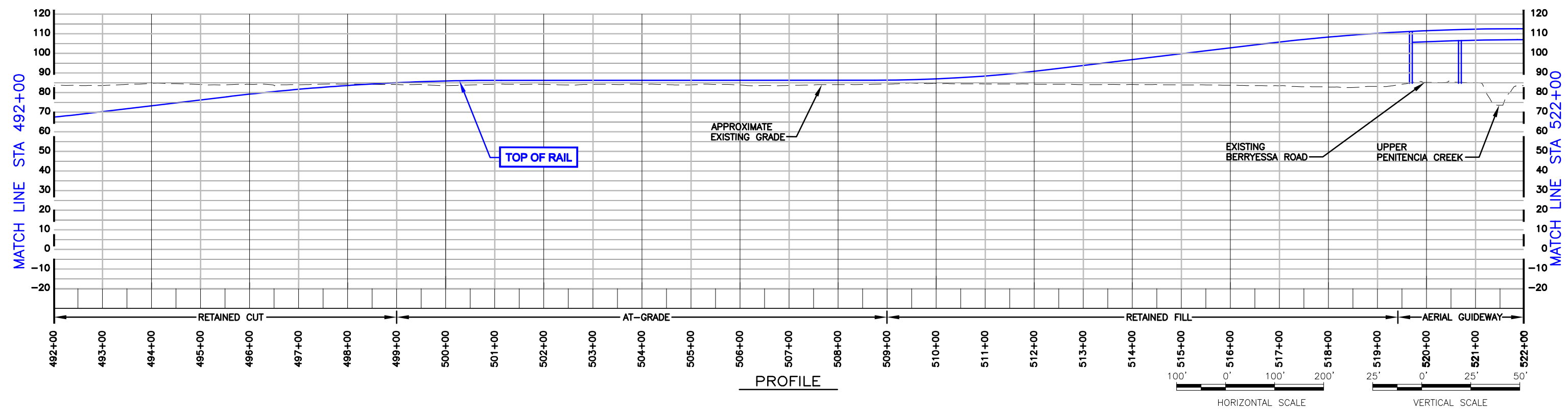
BERRYESSA STATION NORTH OPTION  
 SHEET 3 OF 3  
 REVISION DATE: 07/16/09  
 PLAN AND PROFILE

Figure C-4

SCHROEDER\_A Jul 24, 2009 - 1:28pm C:\pwworking\pwworking\schroeder\_a\msd\05058\EXHIBIT - FIG\_C-4.dwg



PLAN



PROFILE

DRAWING IS SCHEMATIC AND FOR ALIGNMENT COMPARISON PURPOSES ONLY.

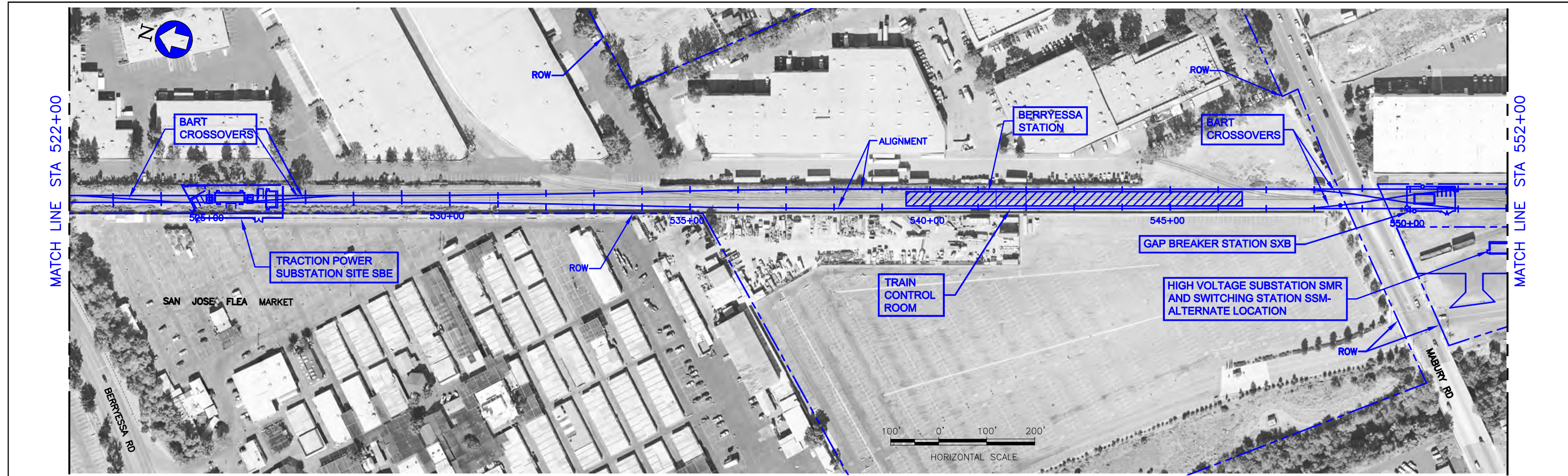
**LEGEND**  
 ——— PROPOSED PRELIMINARY ENGINEERING ALIGNMENT

**SVRTP ALTERNATIVE**  
 BERRYESSA STATION SOUTH OPTION  
 SHEET 1 OF 3  
 REVISION DATE: 07/16/09  
 PLAN AND PROFILE

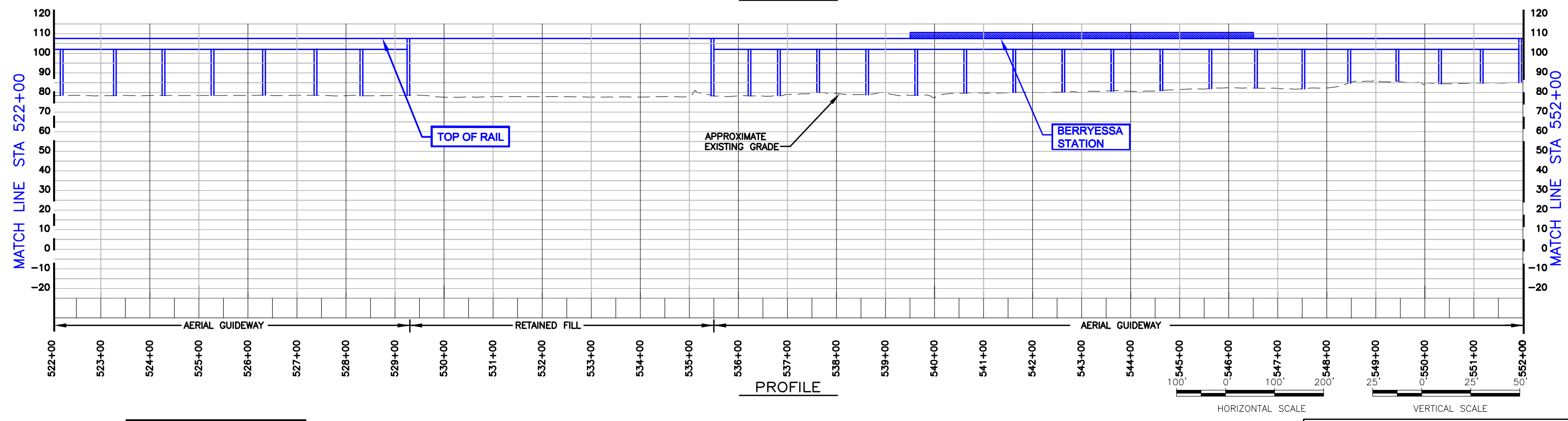
Figure C-5

SCHROEDER\_A Jul 23, 2009 - 1:19pm C:\pwworking\pwworking\projects\070509\070509A\EXHIBIT - FIG\_C-5.dwg





PLAN



PROFILE

DRAWING IS SCHEMATIC AND FOR ALIGNMENT COMPARISON PURPOSES ONLY.

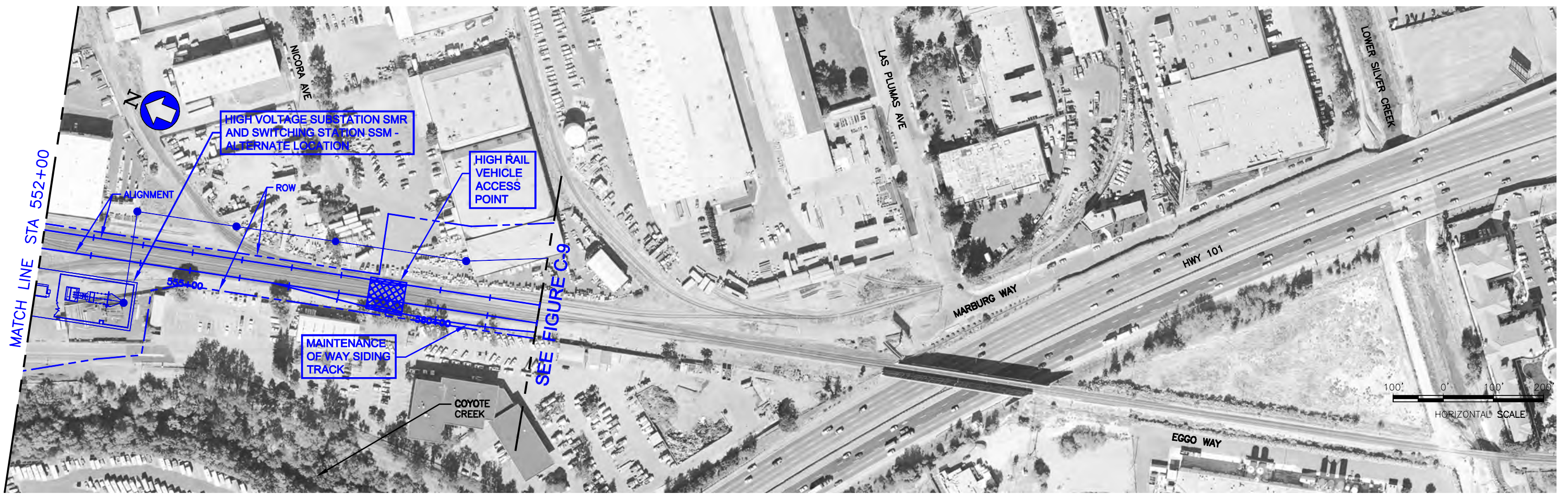
**LEGEND**  
 ——— PROPOSED PRELIMINARY ENGINEERING ALIGNMENT

**SVRTP ALTERNATIVE**  
 BERRYESSA STATION SOUTH OPTION  
 SHEET 2 OF 3  
 REVISION DATE: 07/16/09  
 PLAN AND PROFILE

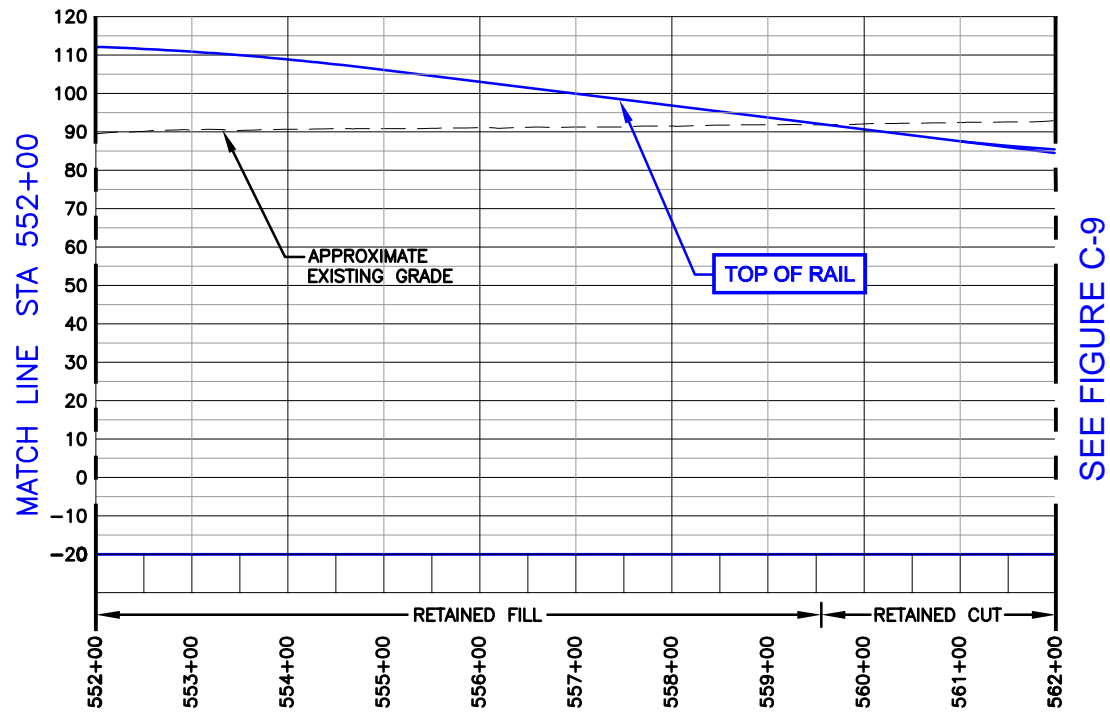
Figure C-6

SCHROEDER\_A Jul 23, 2009 - 1:26pm C:\pwworking\pwworking\schroeder\_a\smr\070509\EXHIBIT - FIG\_C-6.dwg

username  
dateandtime  
dwgname



PLAN

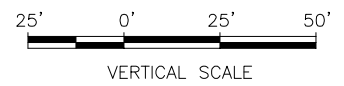
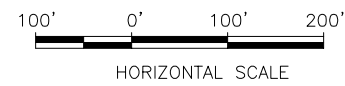


PROFILE

DRAWING IS SCHEMATIC AND FOR ALIGNMENT COMPARISON PURPOSES ONLY.

LEGEND

— PROPOSED PRELIMINARY ENGINEERING ALIGNMENT



SVRTP ALTERNATIVE

BERRYESSA STATION SOUTH OPTION  
SHEET 3 OF 3  
REVISION DATE: 07/16/09  
PLAN AND PROFILE

Figure C-7

SCHROEDER\_A Jul 24, 2009 1:40pm C:\pwworking\pwworking\projects\2009\071609\BERRYESSA STATION SOUTH OPTION\FIG C-7.dwg



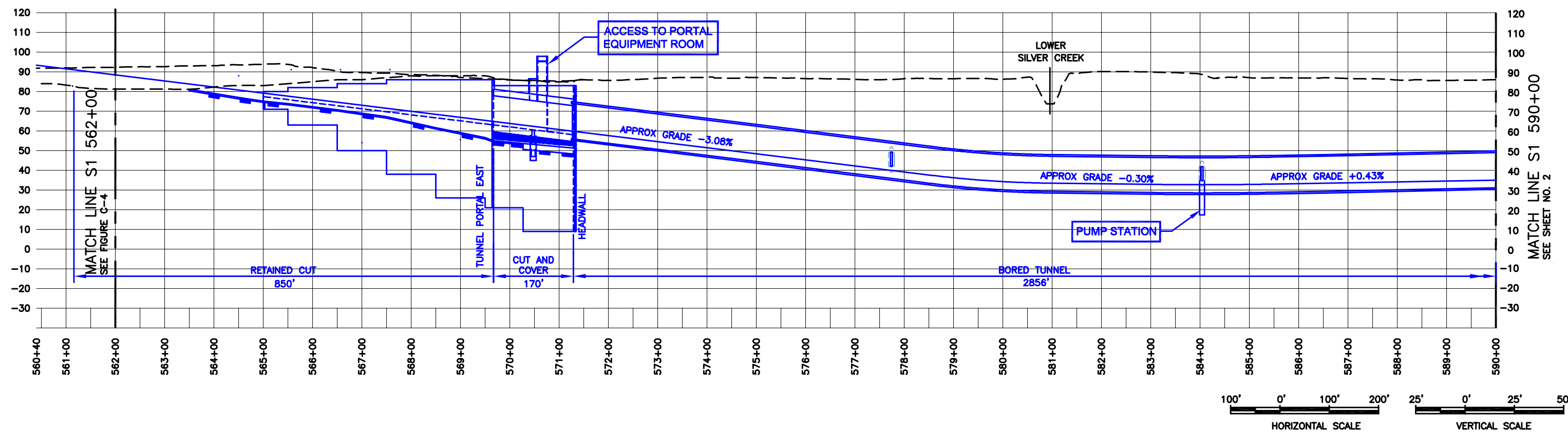
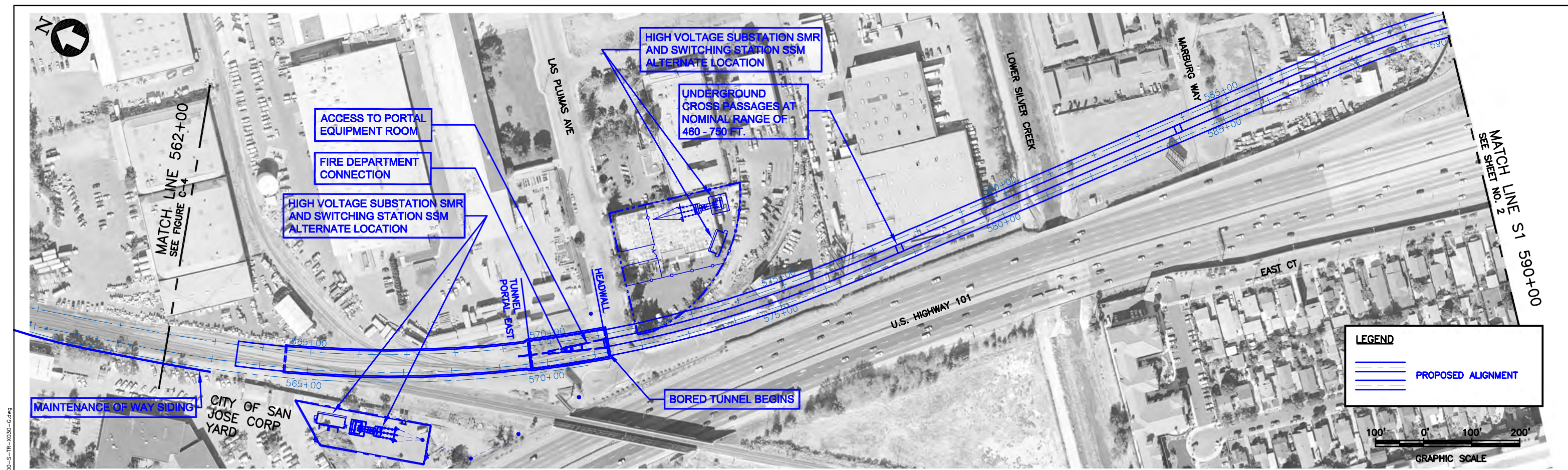


Figure C-9

SVRTP ALTERNATIVE  
 PLAN AND PROFILE  
 SHEET 1  
 REVISION DATE: 05/11/09

JOHNSON\_H May 11, 2009 9:17am V:\UCAD00\35% FE\PRESERVATIONS\TR-TSD Reports\Environmental Impact Statement, Option 1 (Federal) - Single Station\ES - PHASE II\0300-S-TR-X030-G.dwg

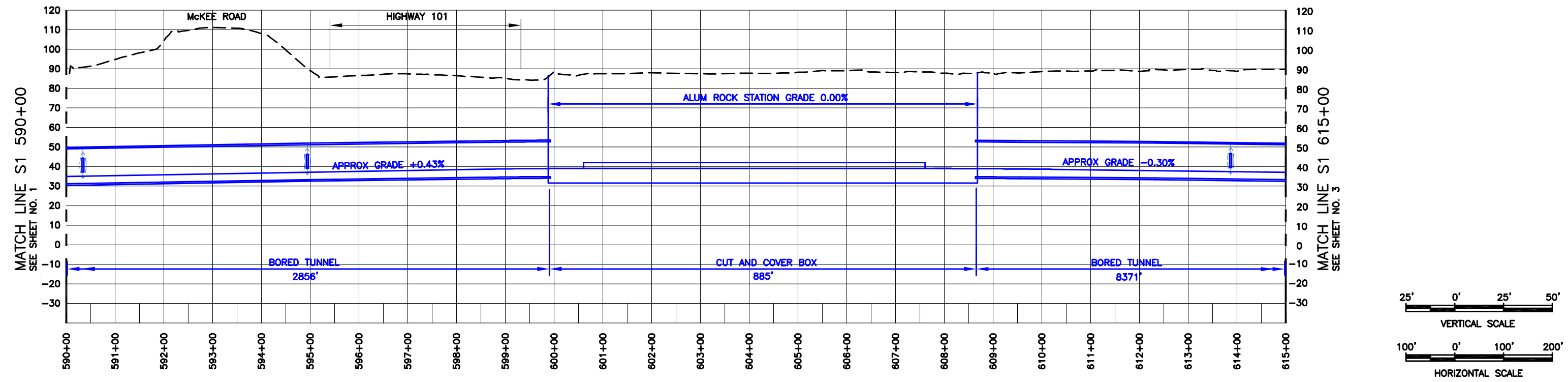
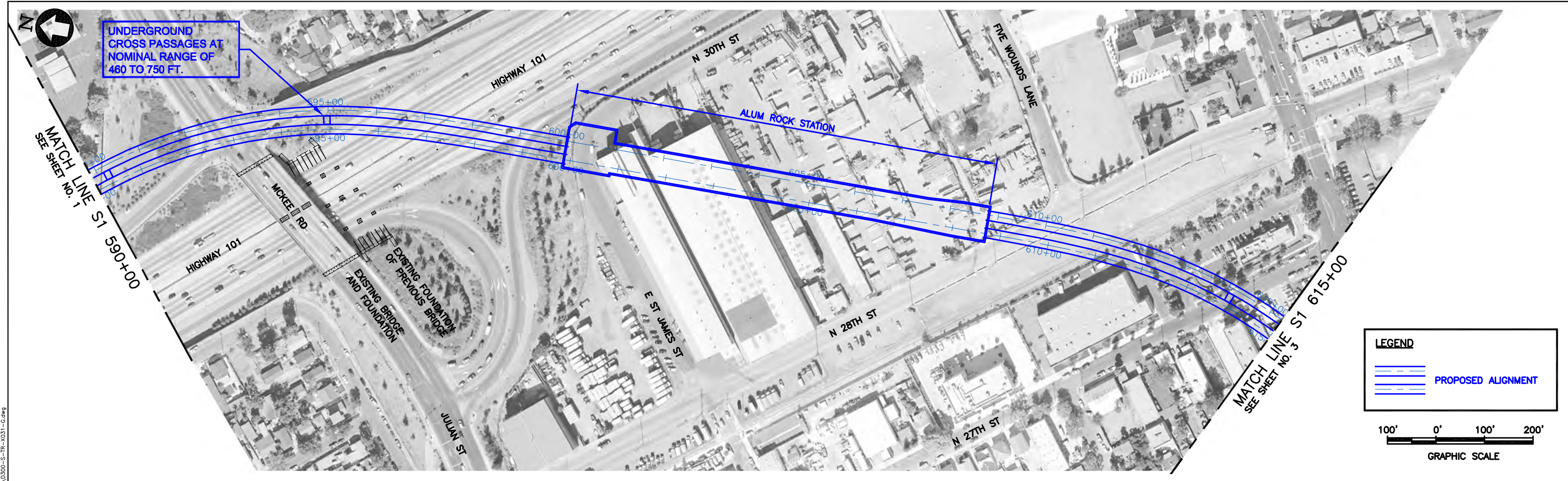


Figure C-10

SVRTP ALTERNATIVE

PLAN AND PROFILE SHEET 2

May 10, 2009 - 5:52pm - V:\LICAD\03\35% PE\PRESENTATIONS\TR-TSED Reports\Environmental Impact Statement, Option 1 (Federal) - Single Station\ES - PHASE II\0300-S-TR-X031-G.dwg  
 JOHNSON\_H

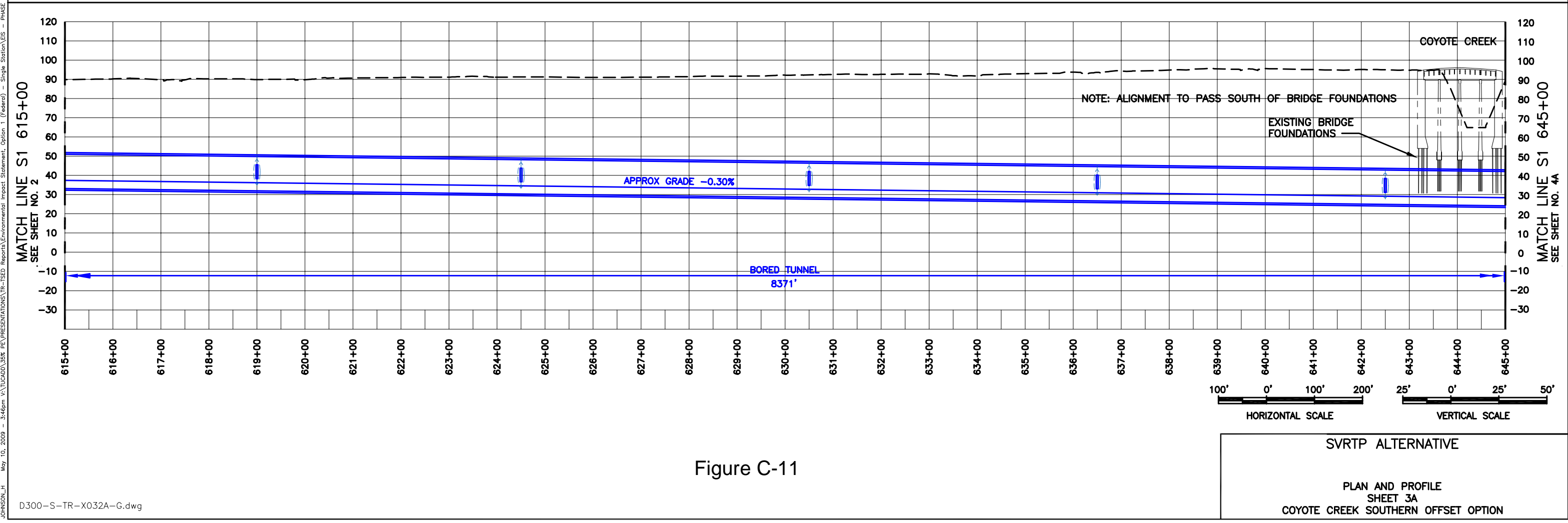
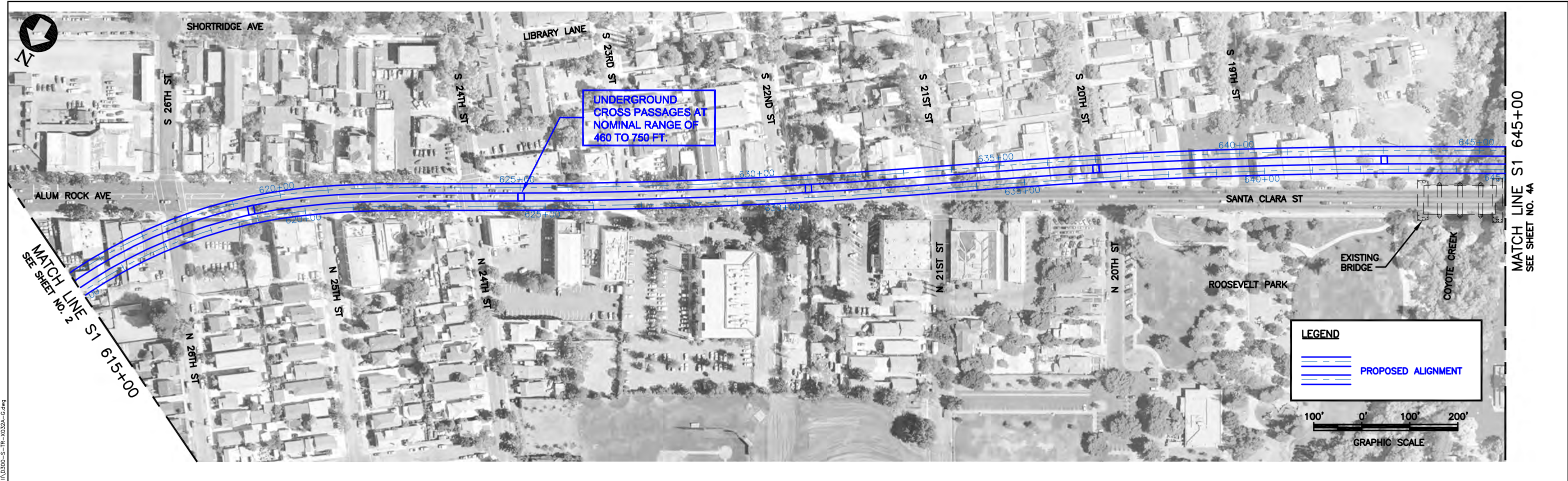


Figure C-11

SVRTP ALTERNATIVE  
 PLAN AND PROFILE  
 SHEET 3A  
 COYOTE CREEK SOUTHERN OFFSET OPTION

May 10, 2009 - 3:46pm V:\LICAD\032A\35% PRESENTATIONS\TR-TSE\Reports\Environmental Impact Statement, Option 1 (Federal) - Single Station\ES - PHASE II\0300-S-TR-X032A-G.dwg  
 JOHNSON\_H

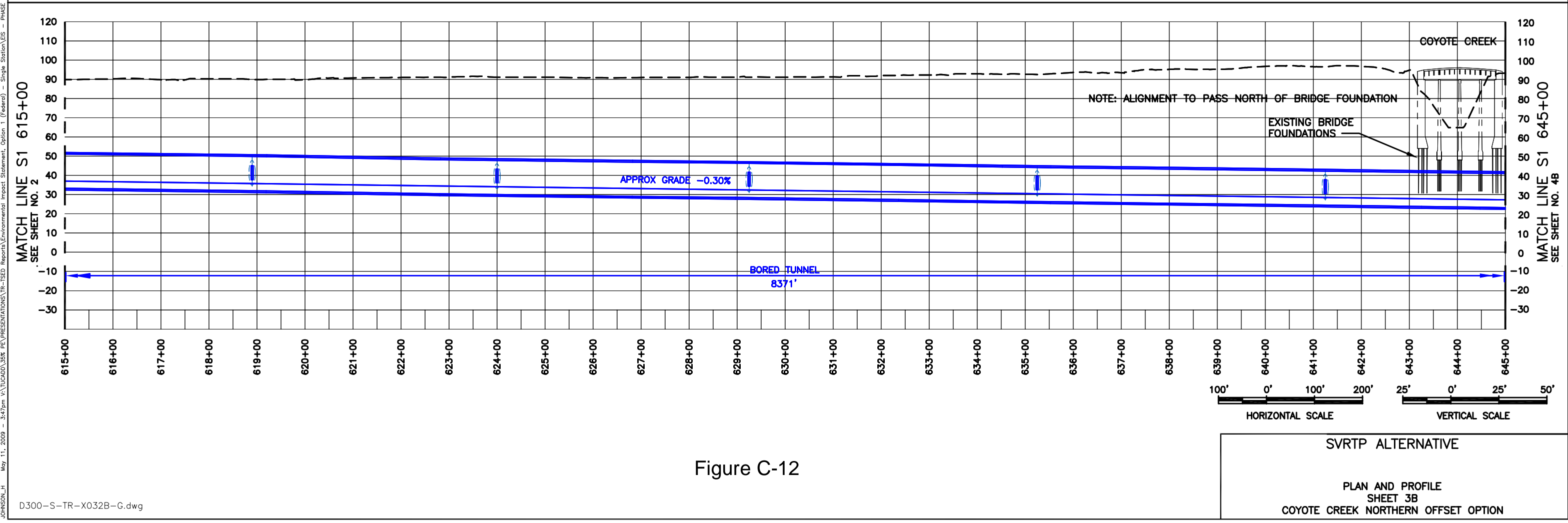
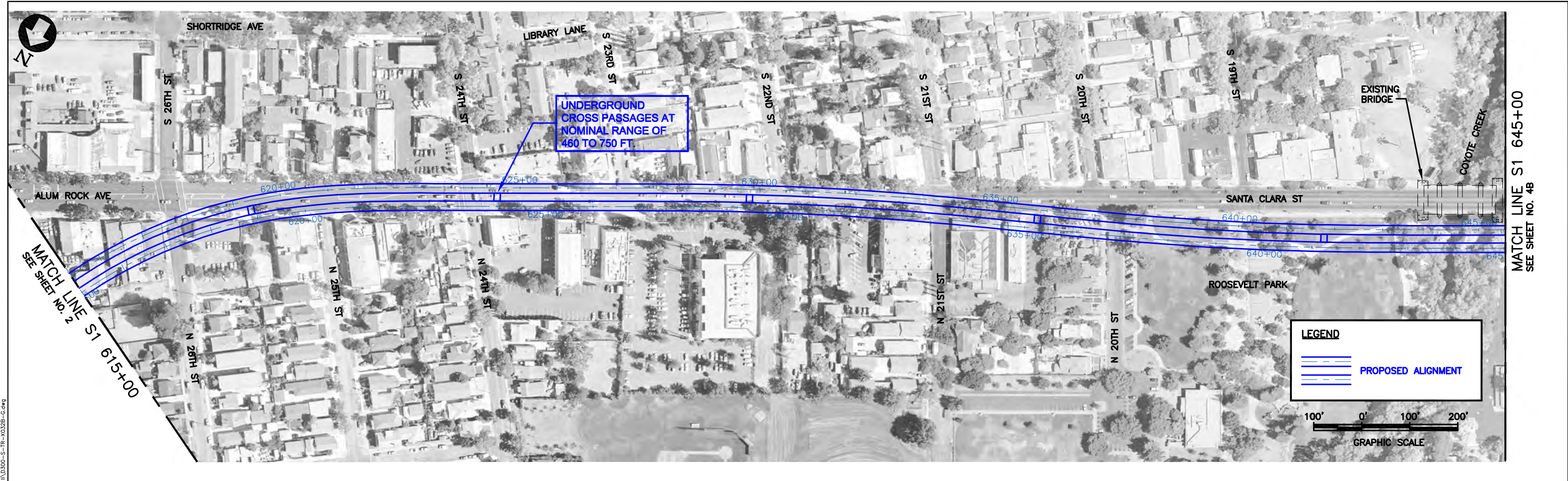


Figure C-12

SVRTP ALTERNATIVE

PLAN AND PROFILE

SHEET 3B

COYOTE CREEK NORTHERN OFFSET OPTION

JOHNSON\_H May 11, 2009 3:47pm V:\UCAD\0328\PE\PRESENTATIONS\TR-TSED Reports\Environmental Impact Statement, Option 1 (Federal) - Single Station\ES - PHASE II\0300-S-TR-X032B-G.dwg

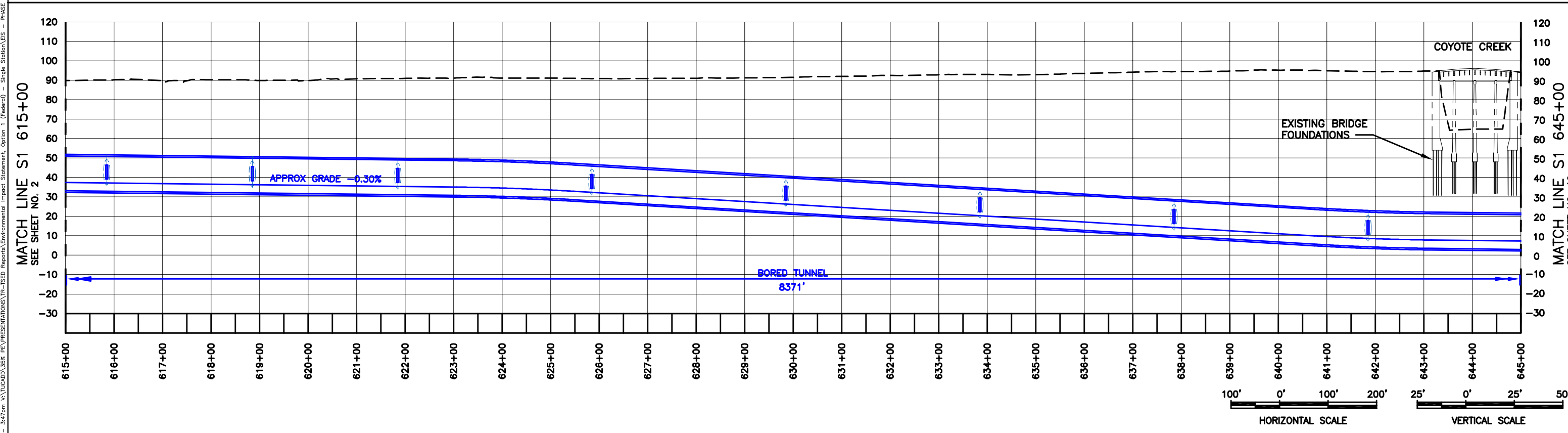
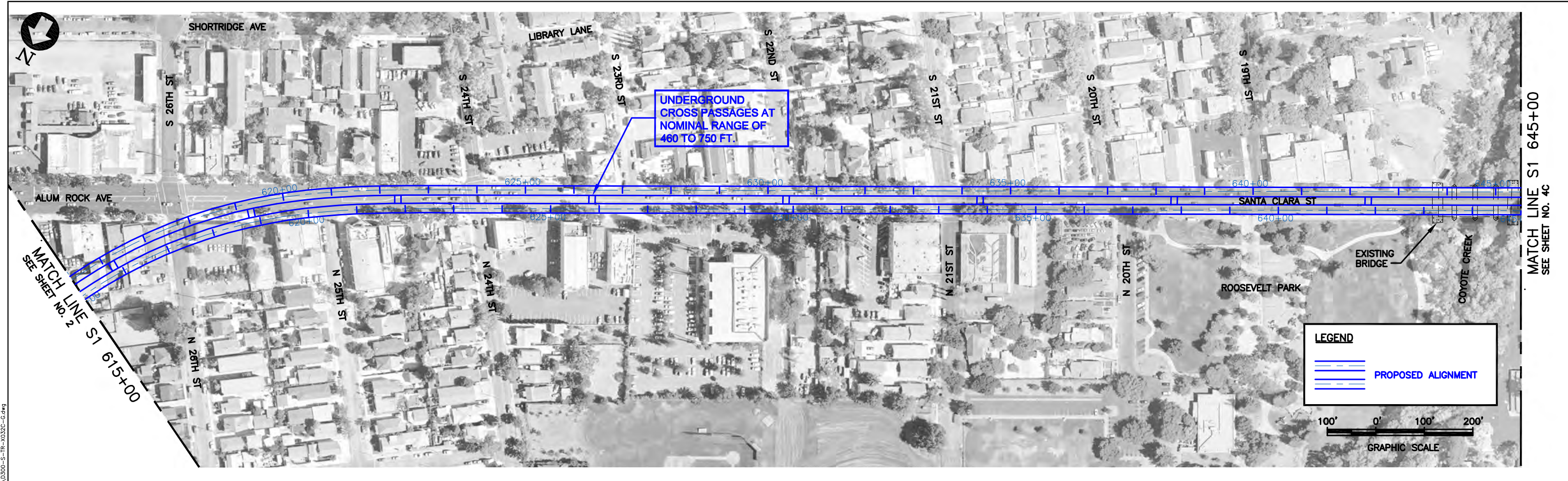


Figure C-13

SVRTP ALTERNATIVE  
 PLAN AND PROFILE  
 SHEET 3C  
 COYOTE CREEK CENTERLINE SANTA CLARA ST. OPTION

May 10, 2009 - 3:47pm - V:\UCAD\0322\PE\PRESENTATIONS\TR-TSE\Reports\Environmental Impact Statement, Option 1 (Federal) - Single Station\ES - PHASE 1\0300-S-TR-X032C-G.dwg  
 JOHNSON\_H



JOHNSON\_H May 11, 2009 9:06am V:\UCAD\033% FE\PRESENTATIONS\TR-TSE\Reports\Environmental Impact Statement, Option 1 (Federal) - Single Station\ES - PHASE II\0300-S-TR-X033A-G.dwg

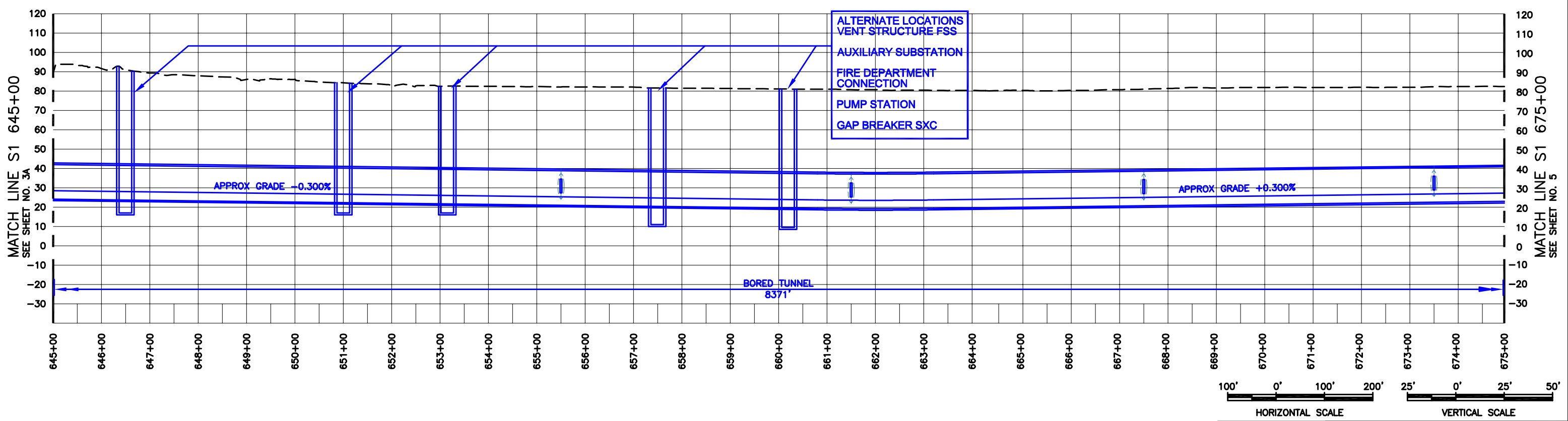
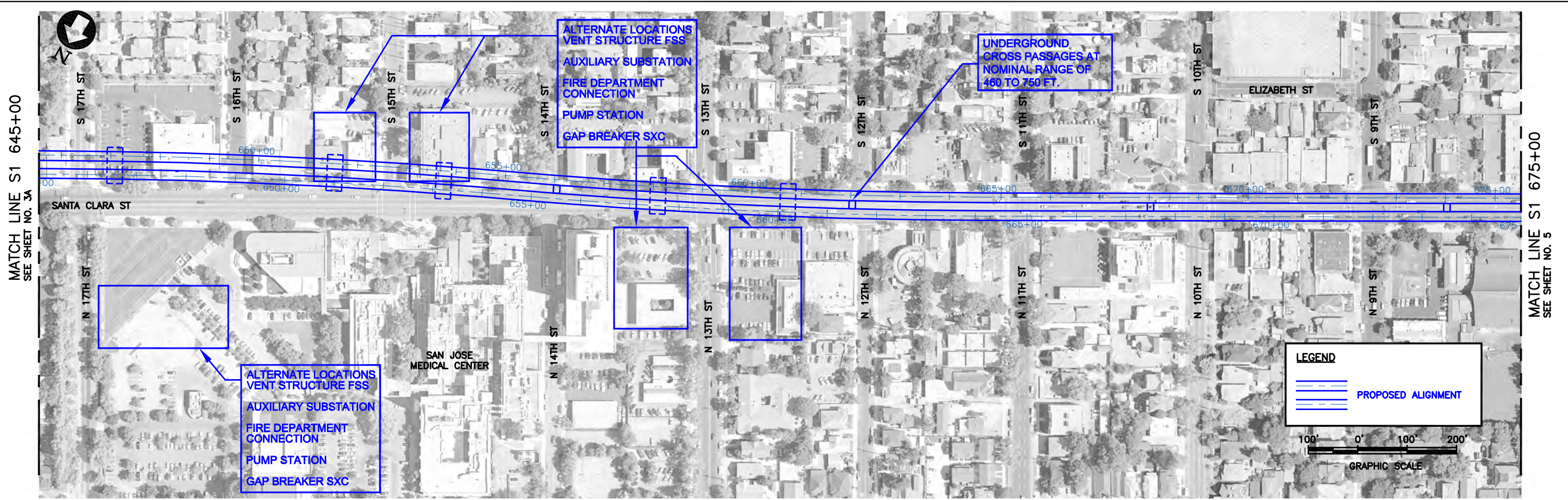


Figure C-14

SVRTP ALTERNATIVE

PLAN AND PROFILE  
SHEET 4A  
COYOTE CREEK SOUTHERN OFFSET OPTION

JOHNSON\_H May 10, 2009 - 3:54pm V:\UCAD01\35% PE\PRESENTATIONS\TR-TSED Reports\Environmental Impact Statement, Option 1 (Federal) - Single Station\ES - PHASE II\0300-S-TR-X033B-G.dwg

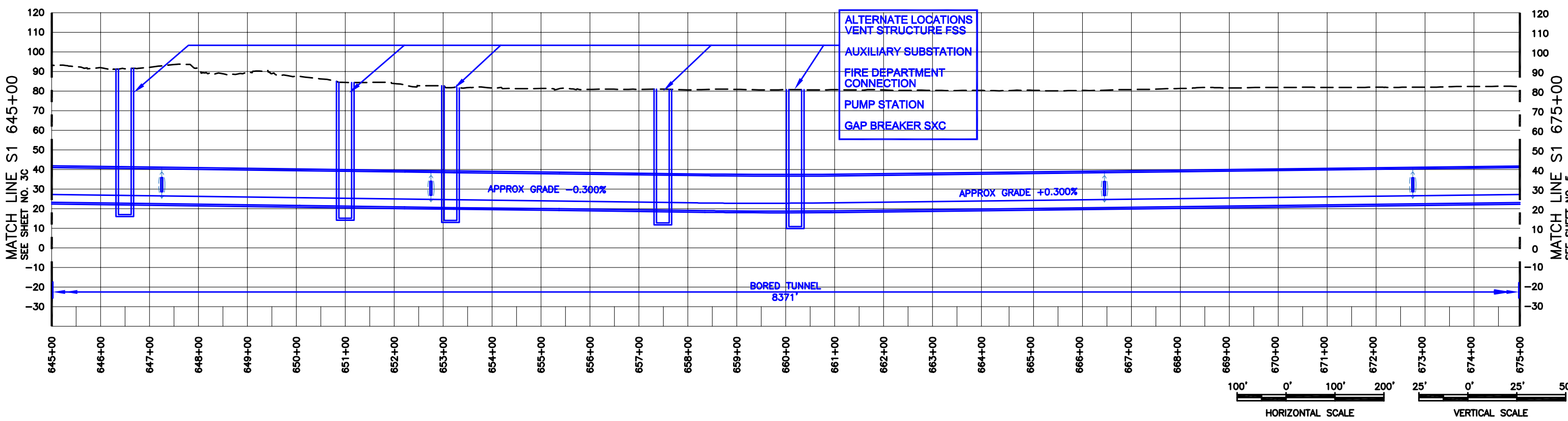
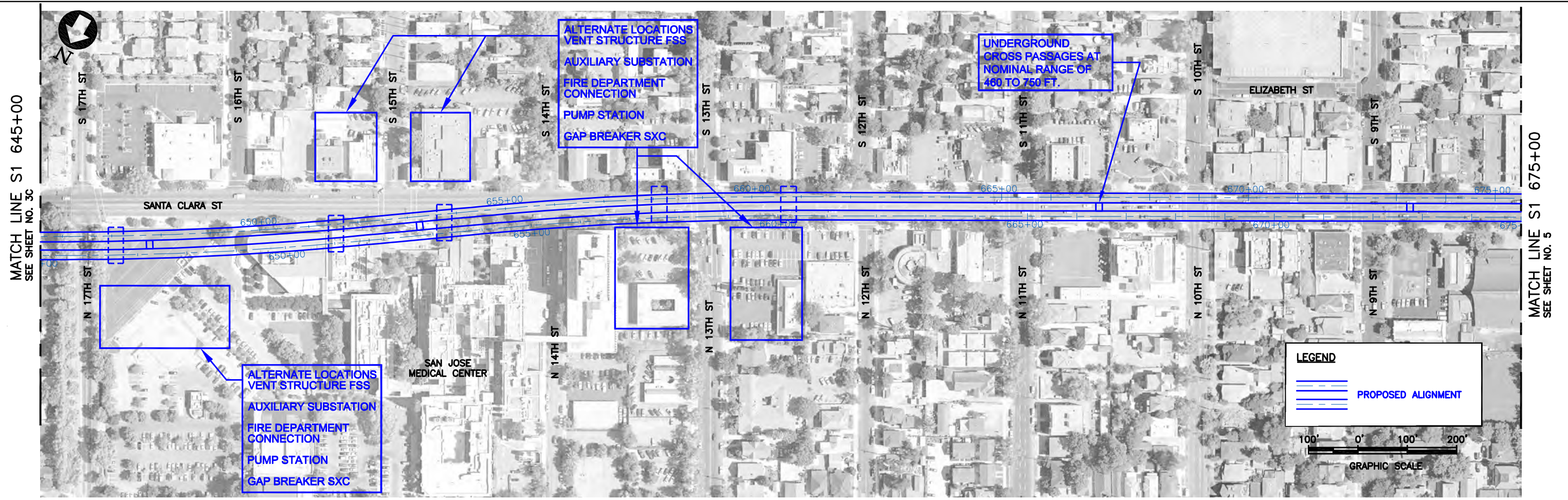


Figure C-15

SVRTP ALTERNATIVE

PLAN AND PROFILE  
SHEET 4B  
COYOTE CREEK NORTHERN OFFSET OPTION

JOHNSON\_H May 10, 2009 - 3:54pm V:\UCAD01\35% PE\PRESNTATIONS\TR-TSED Reports\Environmental Impact Statement, Option 1 (Federal) - Single Station\ES - PHASE II\0300-S-TR-X033C-G.dwg

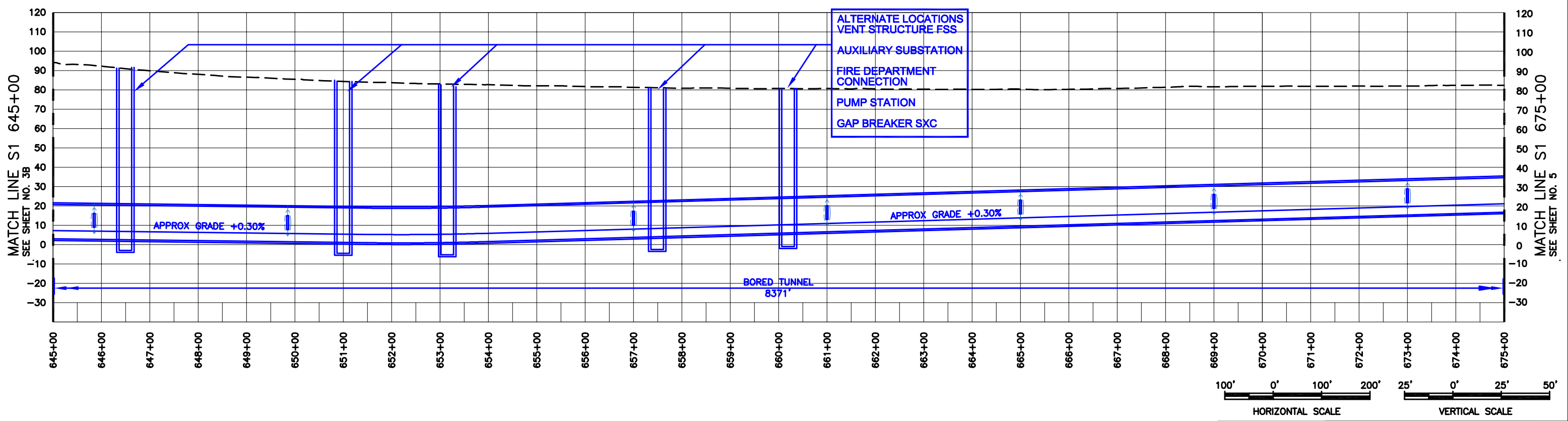
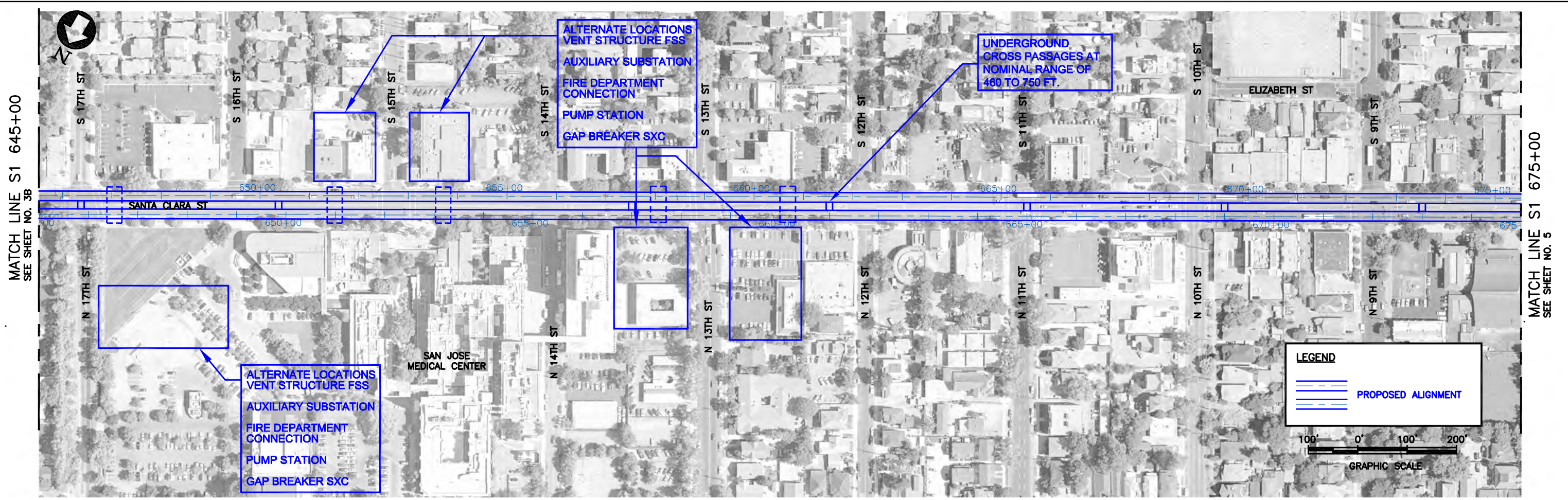


Figure C-16

SVRTP ALTERNATIVE

SHEET 4C

COYOTE CREEK CENTERLINE SANTA CLARA ST. OPTION

JOHNSON\_H May 10, 2009 3:55pm V:\LICAD\03\PE\PRESENTATIONS\TR-TSE\Reports\Environmental Impact Statement, Option 1 (Federal) - Single Station\ES - PHASE II\0300-S-TR-X034-G.dwg

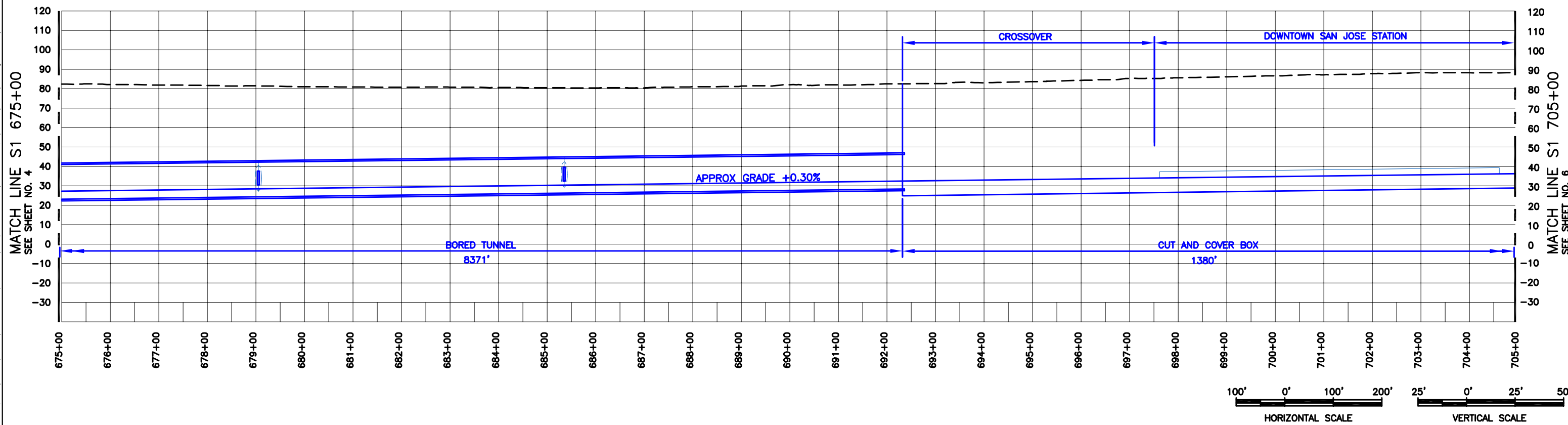
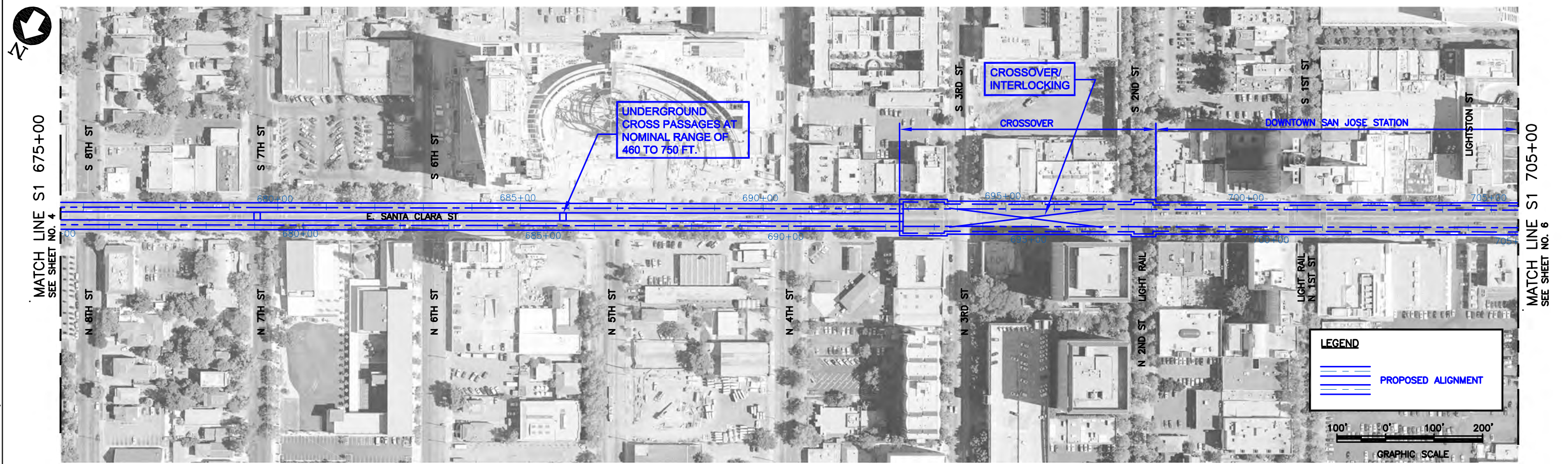


Figure C-17

SVRTP ALTERNATIVE

PLAN AND PROFILE  
SHEET 5

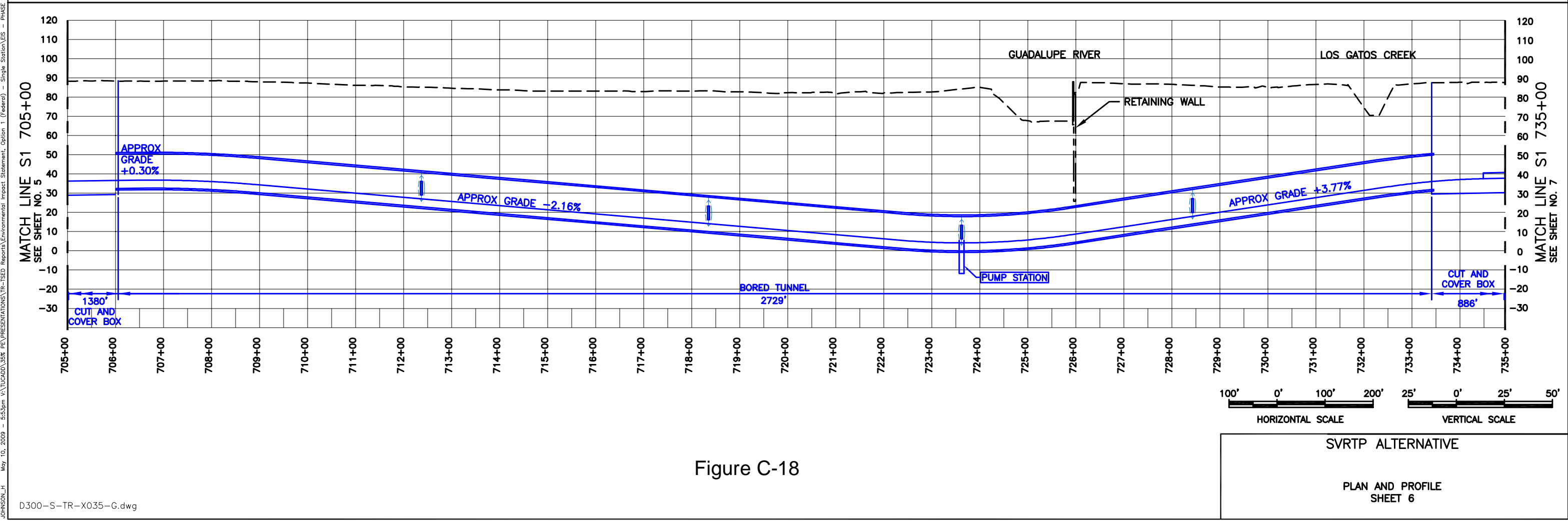
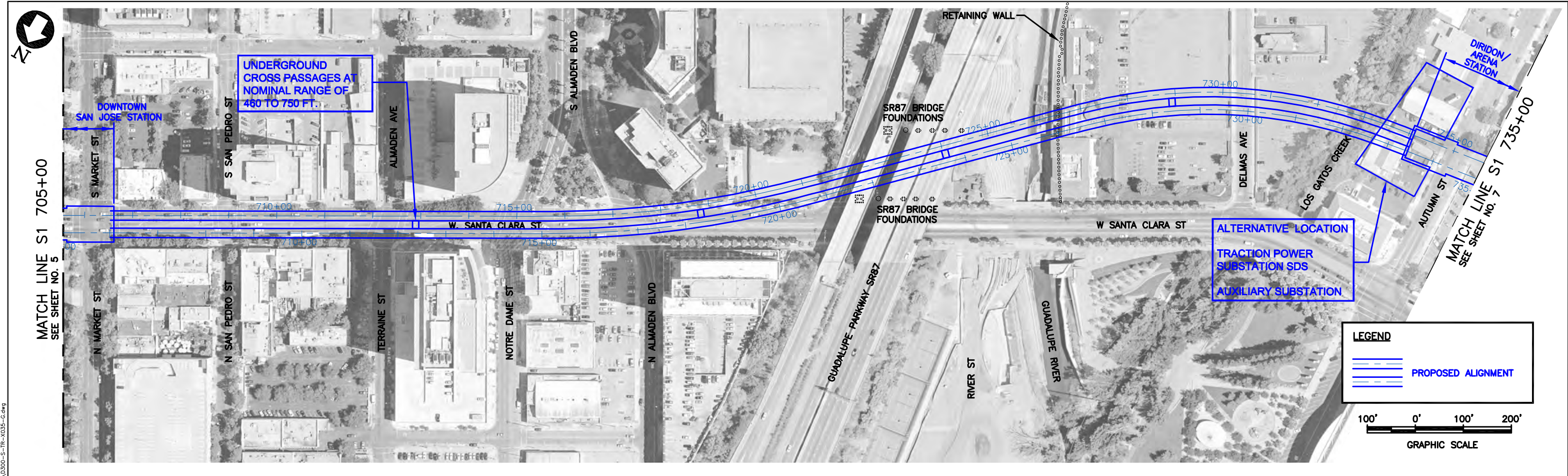


Figure C-18

SVRTP ALTERNATIVE  
 PLAN AND PROFILE  
 SHEET 6

May 10, 2009 - 5:53pm - V:\LOCAL\35% FE\PRESENTATIONS\TR-TRSD Reports\Environmental Impact Statement, Option 1 (Federal) - Single Station\ES - PHASE II\0300-S-TR-X035-G.dwg  
 JOHNSON\_H





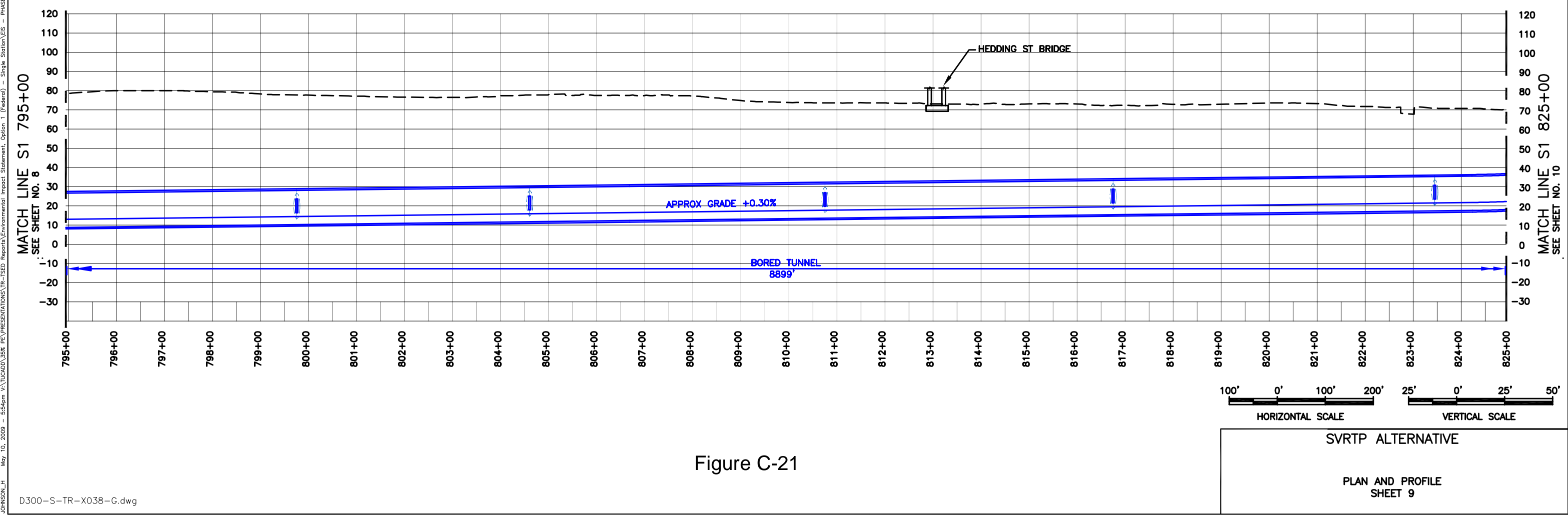
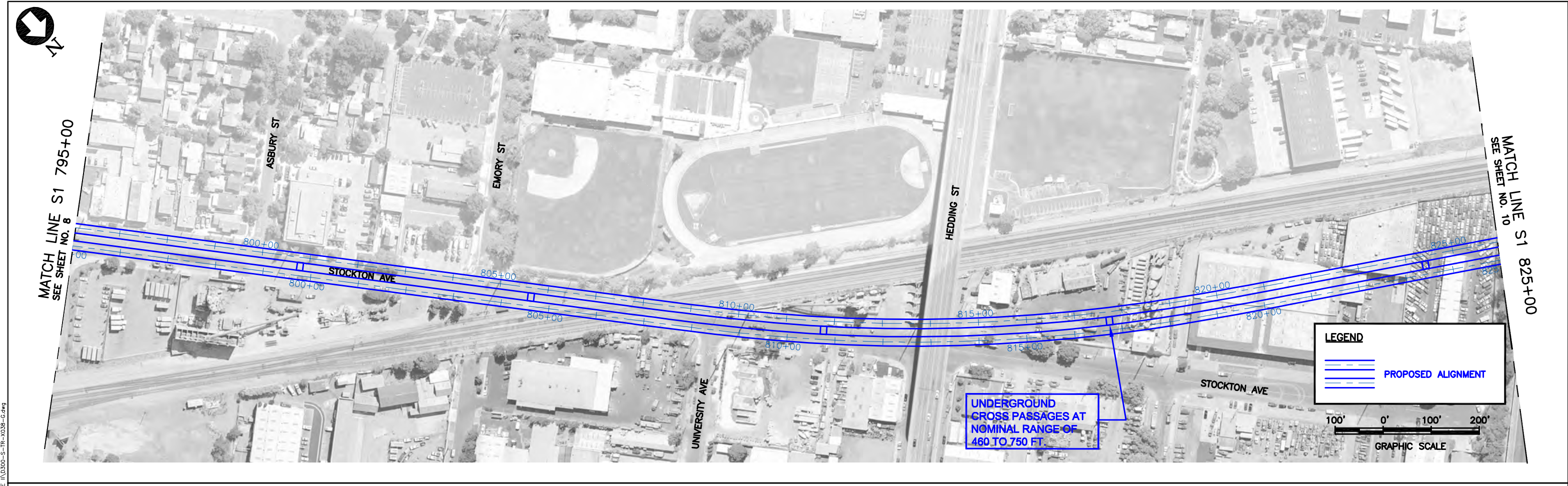


Figure C-21

JOHNSON\_H May 10, 2009 5:54pm V:\UCAD00\35% FE\PRESERVATIONS\TR-TSE\Reports\Environmental Impact Statement, Option 1 (Federal) - Single Station\ES - PHASE II\0300-S-TR-X038-G.dwg



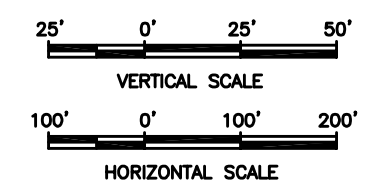
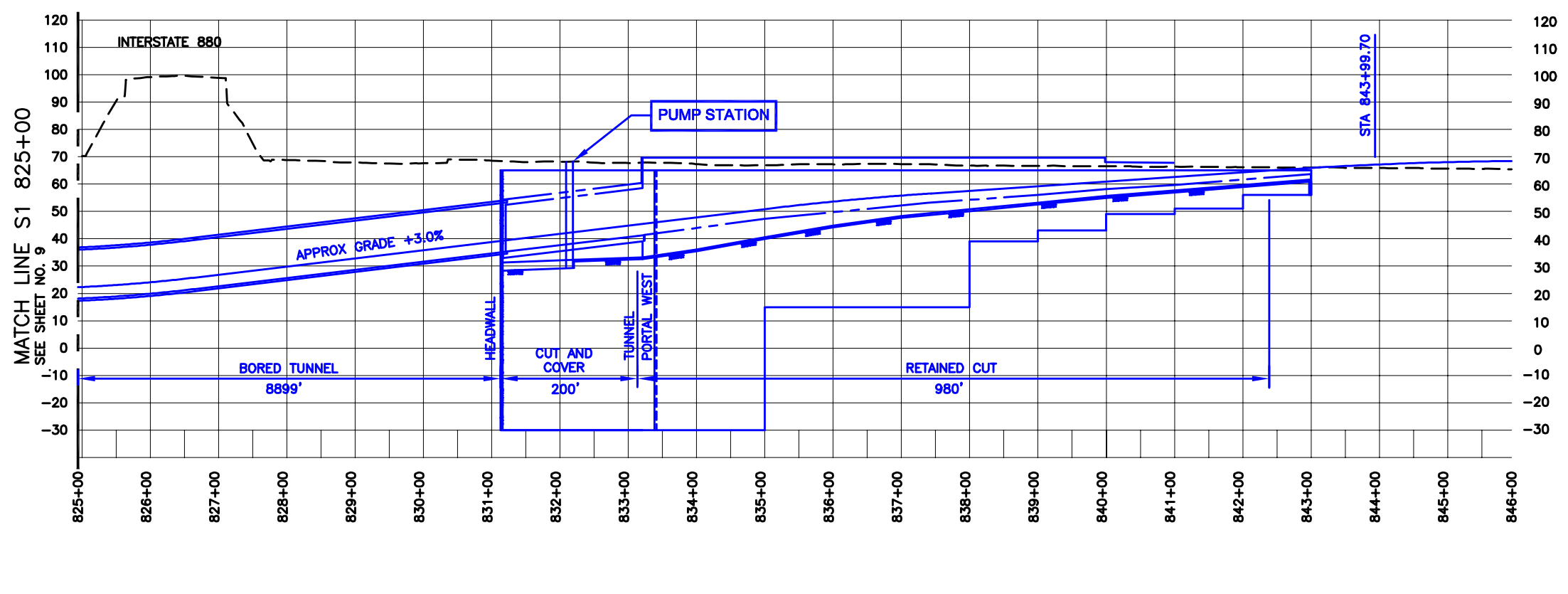
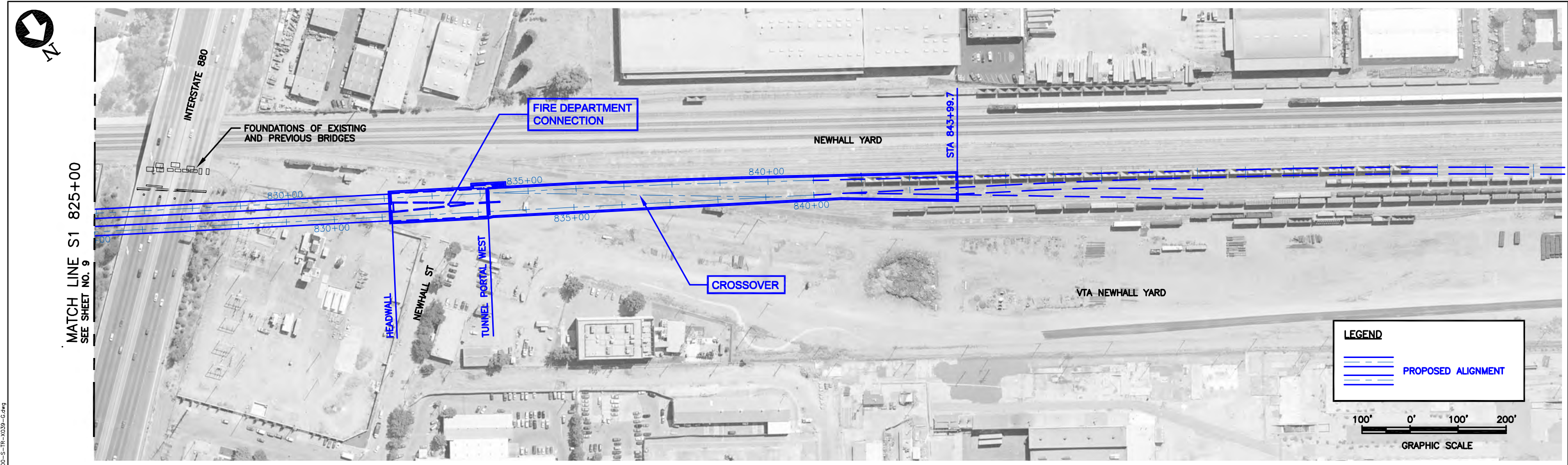


Figure C-22

SVRTP ALTERNATIVE  
 PLAN AND PROFILE  
 SHEET 10  
 WEST PORTAL

May 11, 2009 - 9:06am V:\UCAD00\35% FE\PRESNTATIONS\TR-TSED Reports\Environmental Impact Statement, Option 1 (Federal) - Single Station\ES - PHASE II\0300-S-TR-X039-G.dwg  
 JOHNSON\_H

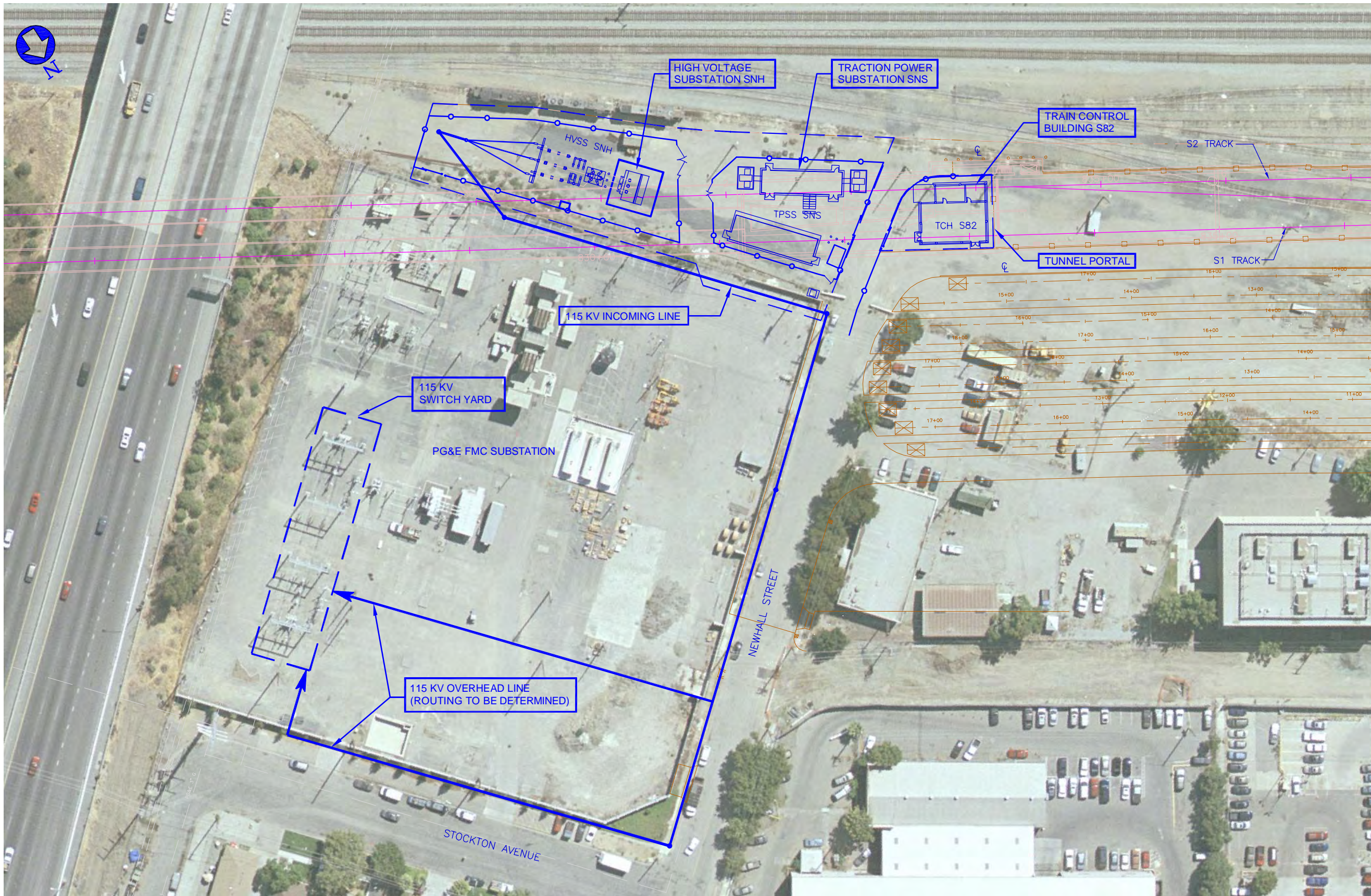
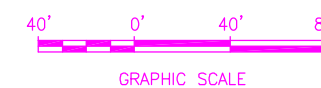
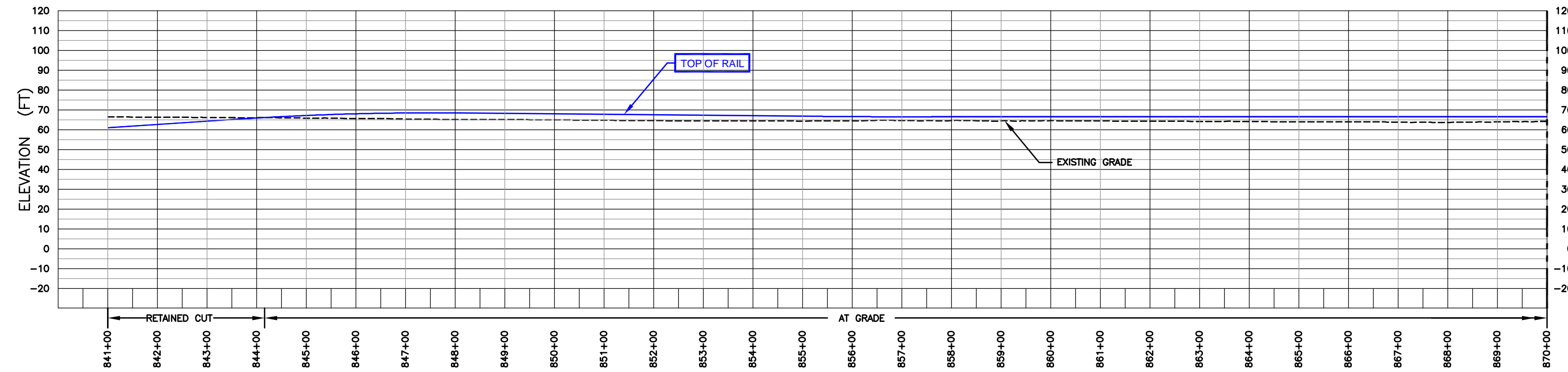
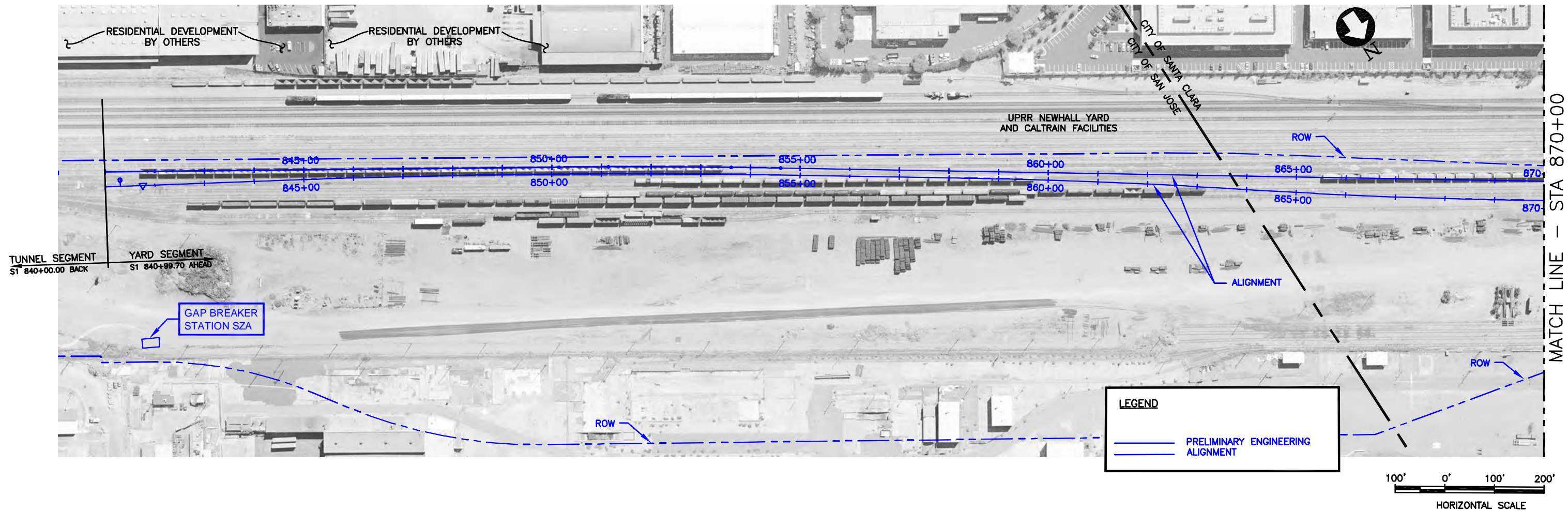


Figure C-23



SVRTP ALTERNATIVE  
SITE PLAN  
HIGH VOLTAGE SUBSTATION SNH,  
TRACTION POWER SUBSTATION SNS AND  
TRAIN CONTROL HOUSE S82  
REVISION DATE: 10/02/08

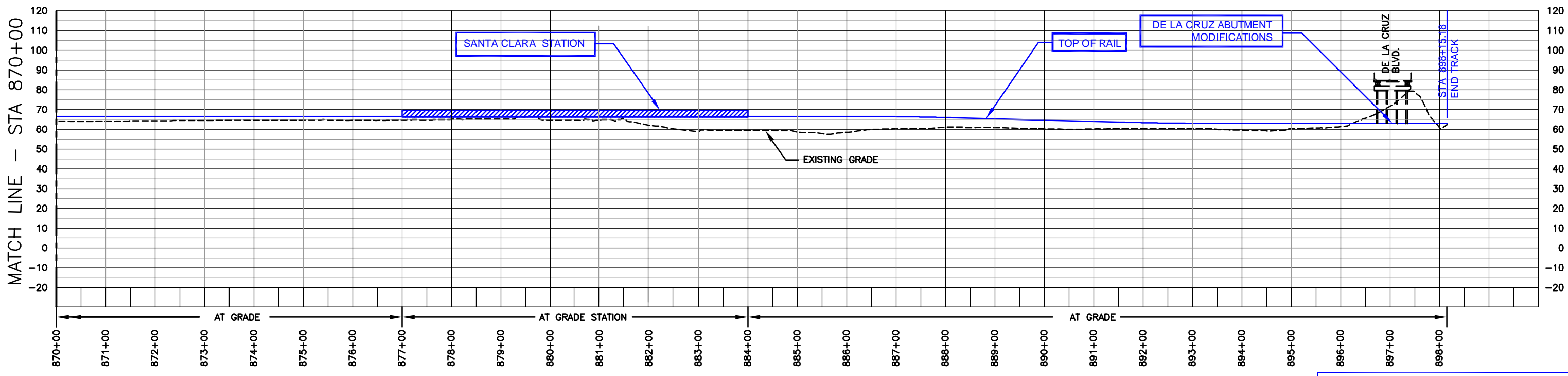
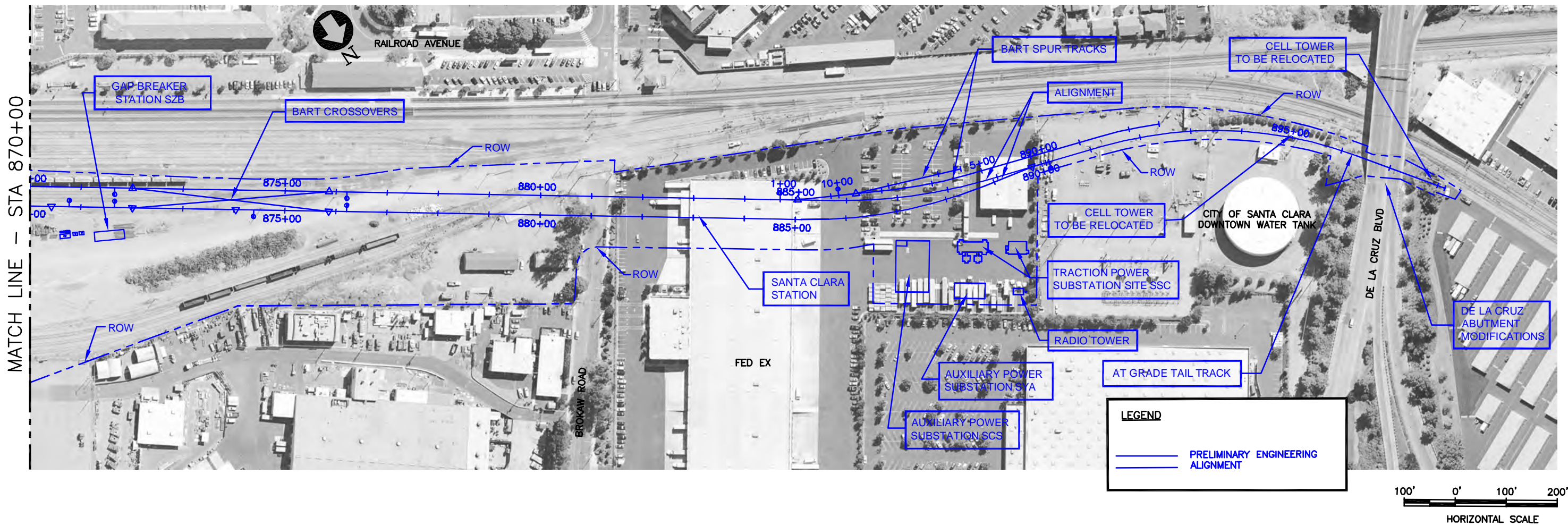


DRAWING IS SCHEMATIC AND FOR ALIGNMENT COMPARISON PURPOSES ONLY.

Figure C-24

SVRTP ALTERNATIVE  
 PLAN & PROFILE  
 REVISION DATE: 02/15/08

UU\_H May 08, 2009 - 8:39am C:\pwworking\amercal\pwworking\2123\FIGURE C-24.dwg



DRAWING IS SCHEMATIC AND FOR ALIGNMENT COMPARISON PURPOSES ONLY.

Figure C-25

SVRTP ALTERNATIVE  
 PLAN & PROFILE  
 REVISION DATE: 02/15/08

LU\_H May 08, 2009 - 8:49pm C:\pwworking\amercal\lu\_h\amerc2123\FIGURE C-25.dwg

