

## **Appendix D**

---

### Cultural Resources Area of Potential Effects Maps



*D.1 – Architectural/Built Resources Area of Potential Effects  
Map*

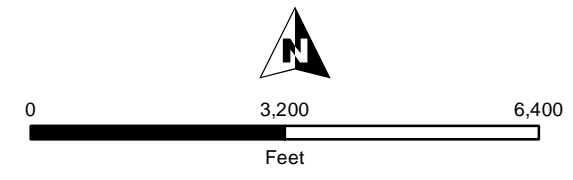




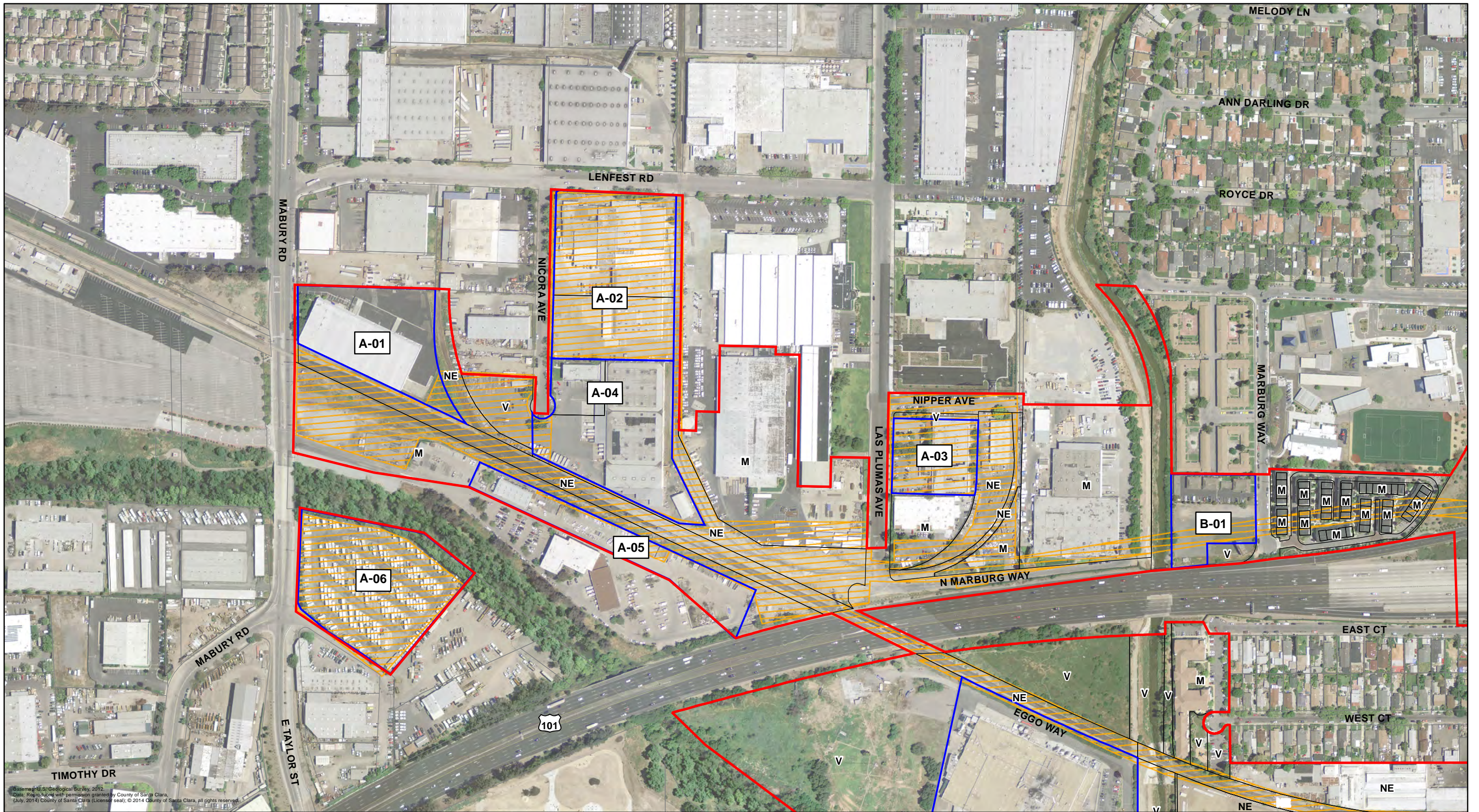
Basemap: U.S. Geological Survey, 2012.  
Data: Reproduced with permission granted by County of Santa Clara.  
(July, 2014) County of Santa Clara (blanck seal), © 2014 County of Santa Clara, all rights reserved.

Figure D.1-INDEK. Architectural APE

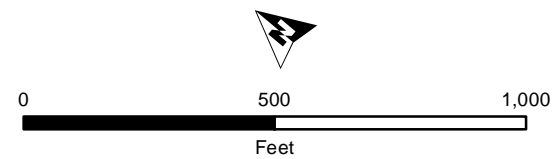
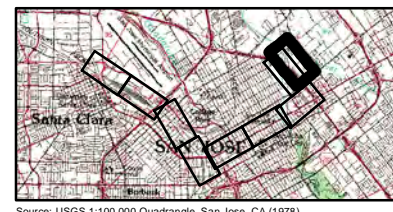
 Architectural APE     Map Sheet







Base map: U.S. Geological Survey, 2012.  
 Data: Reproduced with permission granted by County of Santa Clara (July, 2014) County of Santa Clara (License seal); © 2014 County of Santa Clara, all rights reserved.



- Architectural APE
- Historic District
- Project Footprint

- A-01 Map Reference Number (Eligible) Eligible for or listed in the NRHP and CRHR as per current survey
- A-01 Map Reference Number (Eligible) Previously determined eligible for or listed in the NRHP and CRHR per 2003 HRER

- A-01 Map Reference Number (CEQA only) Historical Resource for the purposes of CEQA only
- A-01 Map Reference Number (Not Eligible) Not eligible for listing in NRHP or CRHR as per current survey

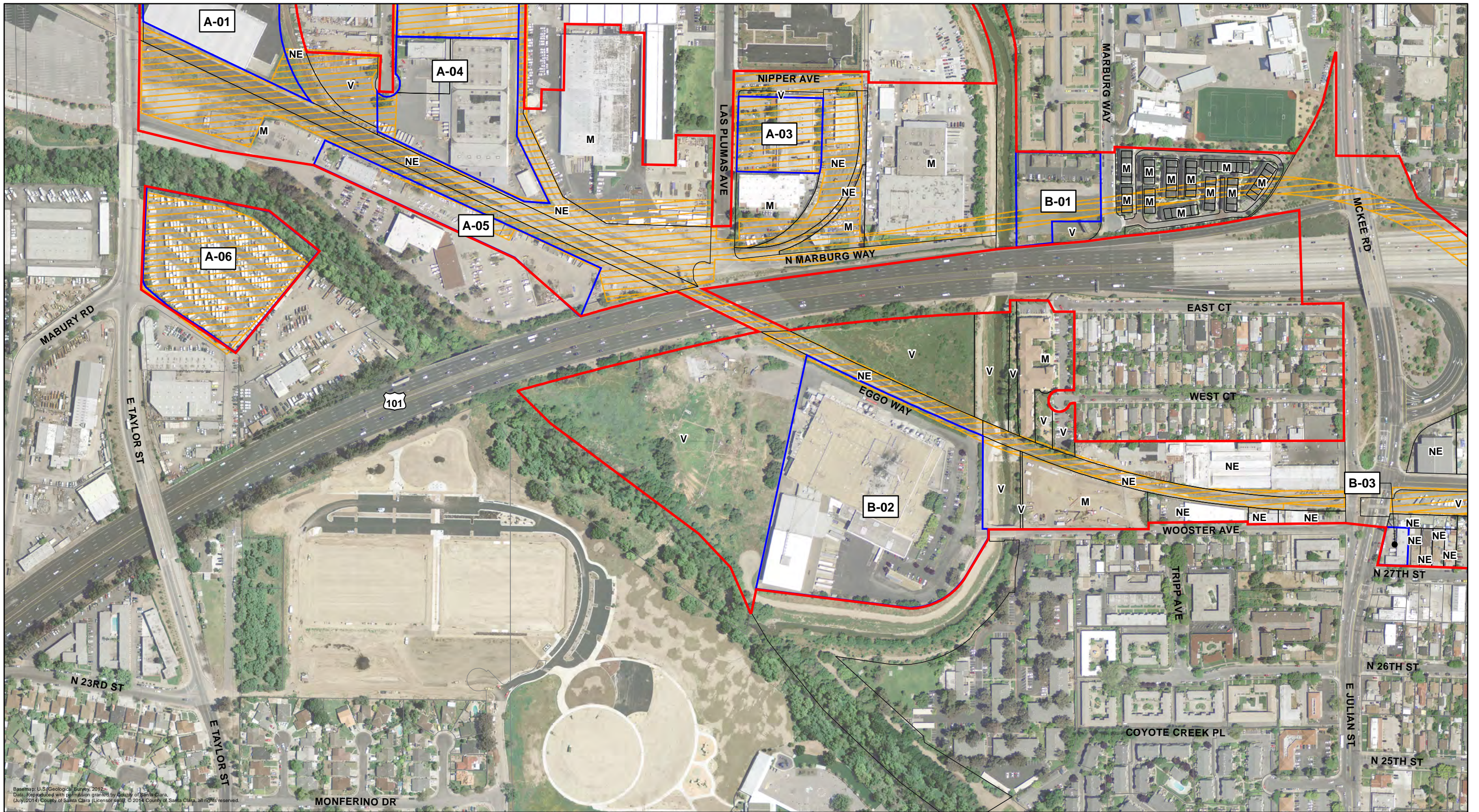
Figure D.1-A. Architectural APE

V = Vacant  
 M = Modern (built after 1975)  
 NE = Previously Determined Not Eligible with SHPO Concurrence (2003)

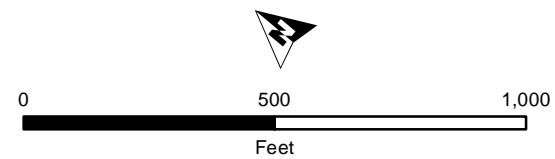
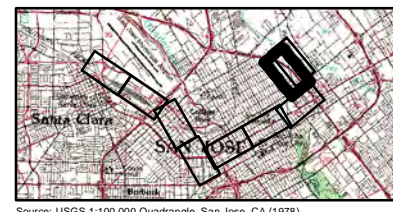
Source: USGS 1:100,000 Quadrangle, San Jose, CA (1978).







Base map: U.S. Geological Survey, 2012.  
 Data: Reproduced with permission granted by County of Santa Clara.  
 (July 2014) County of Santa Clara (License # 091). © 2014 County of Santa Clara, all rights reserved.



- Architectural APE
- Historic District
- Project Footprint

- B-01 Map Reference Number (Eligible)  
Eligible for or listed in the NRHP and CRHR as per current survey
- B-01 Map Reference Number (Eligible)  
Previously determined eligible for or listed in the NRHP and CRHR per 2003 HRER

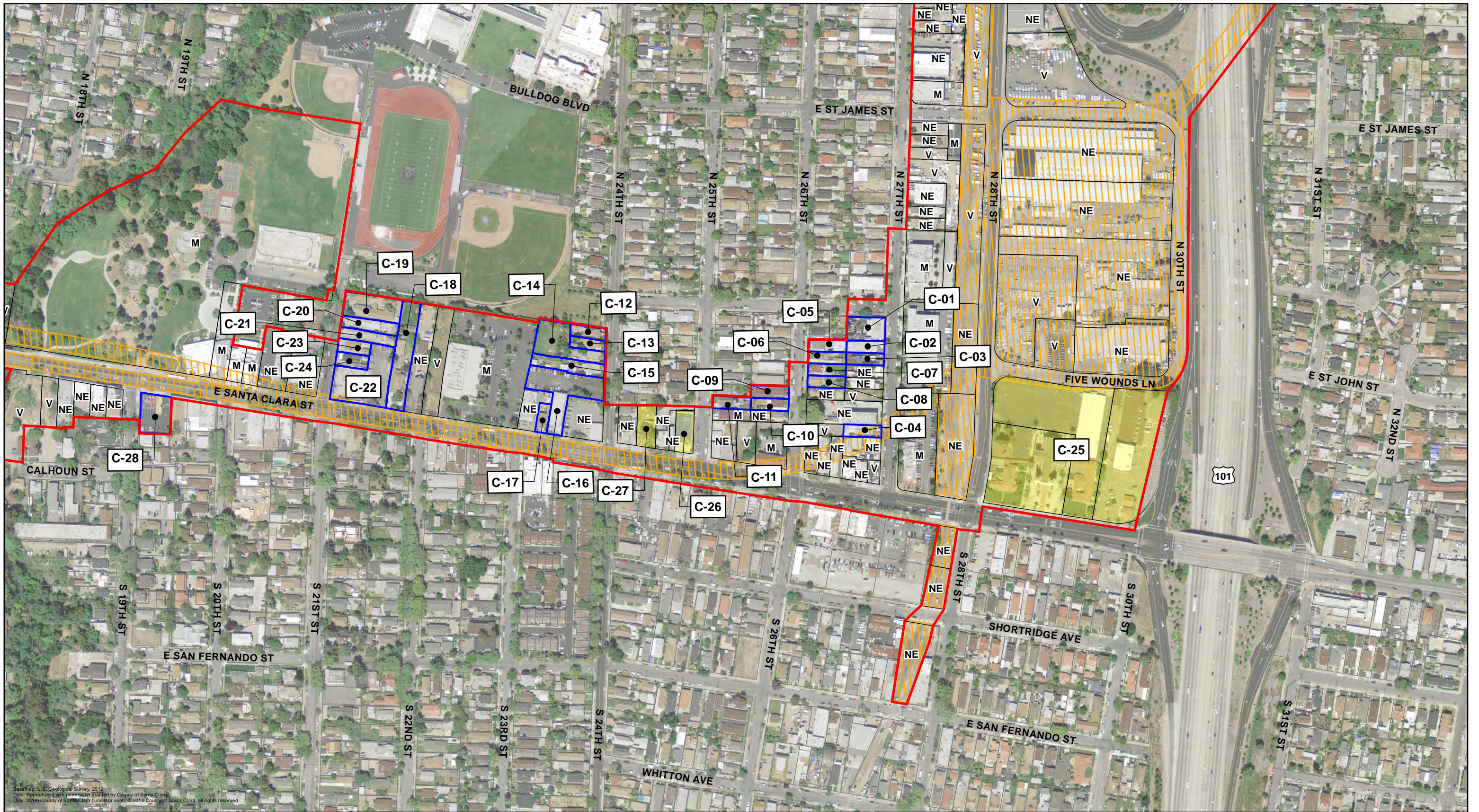
- B-01 Map Reference Number (CEQA only)  
Historical Resource for the purposes of CEQA only
- B-01 Map Reference Number (Not Eligible)  
Not eligible for listing in NRHP or CRHR as per current survey

**Figure D.1-B. Architectural APE**

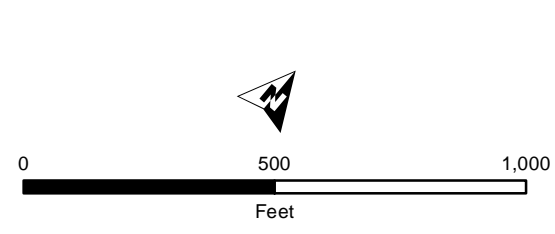
V = Vacant  
 M = Modern (built after 1975)  
 NE = Previously Determined Not Eligible with SHPO Concurrence (2003)

Source: USGS 1:100,000 Quadrangle, San Jose, CA (1978).





Base map: U.S. Geological Survey, 2012  
 Data: Reproduced with permission granted by County of Santa Clara  
 (July, 2014) County of Santa Clara (Licensor seal) © 2014 County of Santa Clara, all rights reserved.  
 Source: USGS 1:100,000 Quadrangle, San Jose, CA (1978).



- Architectural APE
- Historic District
- Project Footprint

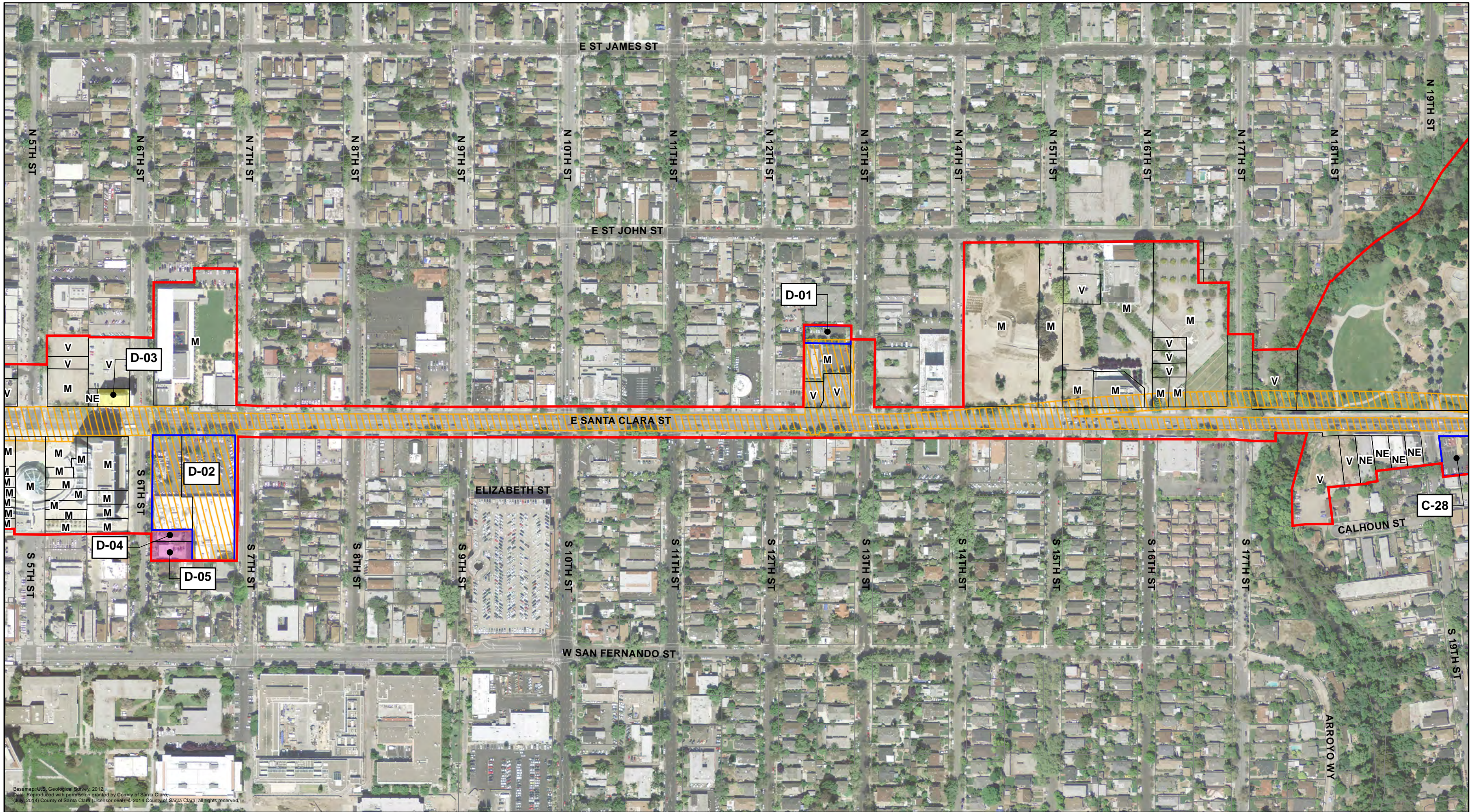
- C-01 Map Reference Number (Eligible)  
Eligible for or listed in the NRHP and CRHR as per current survey
- C-01 Map Reference Number (Eligible)  
Previously determined eligible for or listed in the NRHP and CRHR per 2003 HRER

- C-01 Map Reference Number (CEQA only)  
Historical Resource for the purposes of CEQA only
- C-01 Map Reference Number (Not Eligible)  
Not eligible for listing in NRHP or CRHR as per current survey

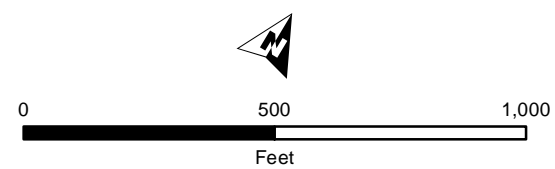
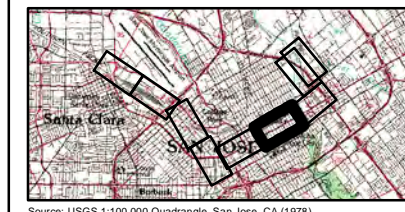
V = Vacant  
 M = Modern (built after 1975)  
 NE = Previously Determined Not Eligible with SHPO Concurrence (2003)

Figure D.1-C. Architectural APE





Base map: U.S. Geological Survey, 2012.  
 Date: Reproduced with permission granted by County of Santa Clara.  
 July, 2014 County of Santa Clara (Licensor sees) © 2014 County of Santa Clara, all rights reserved.



- Architectural APE
- Historic District
- Project Footprint

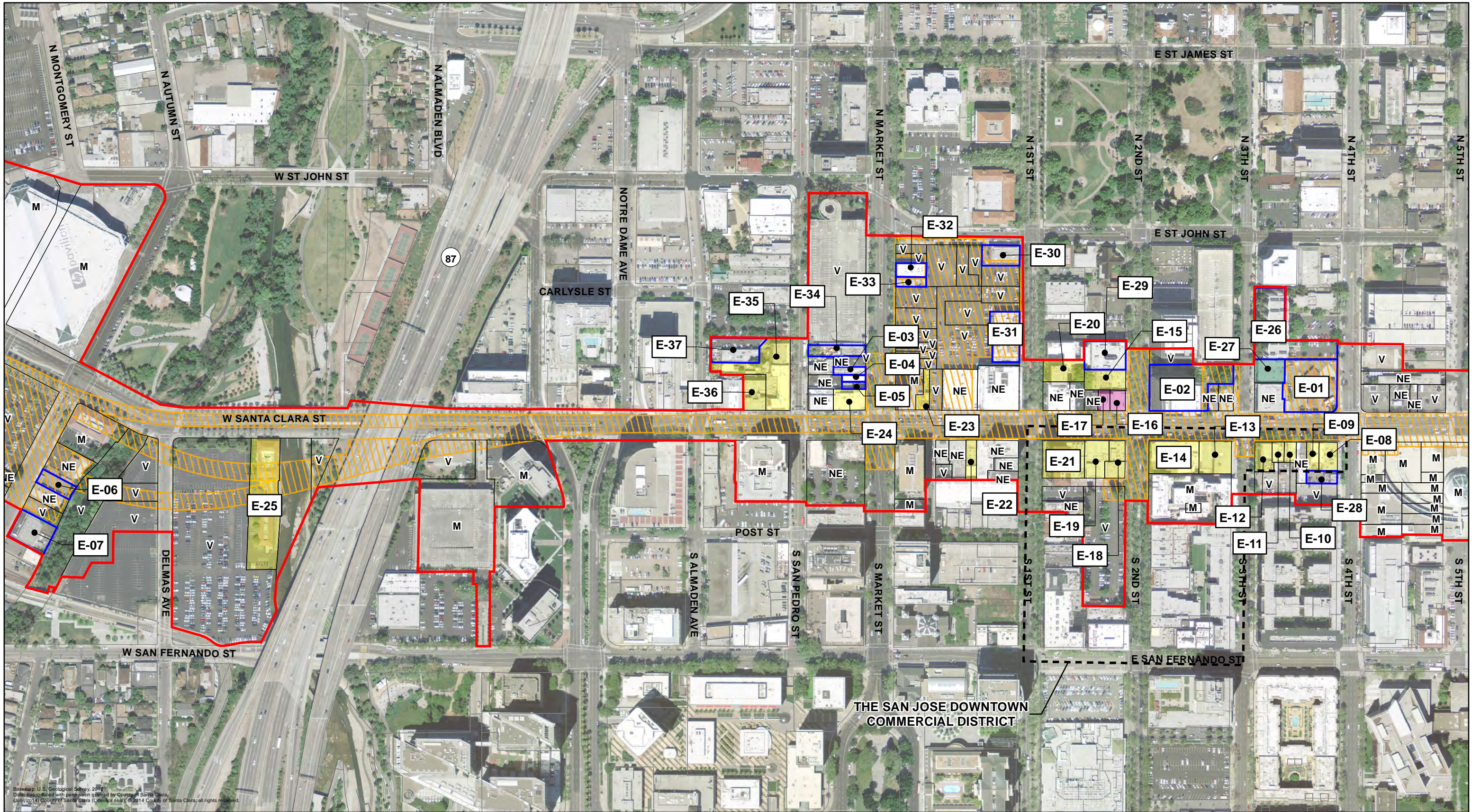
- D-01 Map Reference Number (Eligible)  
Eligible for or listed in the NRHP and CRHR as per current survey
- D-01 Map Reference Number (Eligible)  
Previously determined eligible for or listed in the NRHP and CRHR per 2003 HRER

- D-01 Map Reference Number (CEQA only)  
Historical Resource for the purposes of CEQA only
- D-01 Map Reference Number (Not Eligible)  
Not eligible for listing in NRHP or CRHR as per current survey

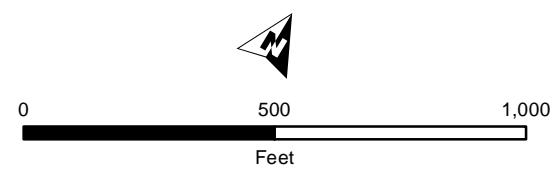
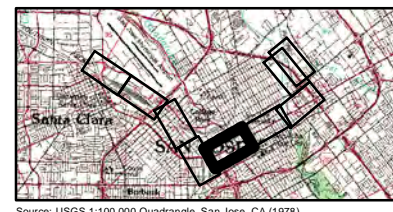
**Figure D.1-D. Architectural APE**

V = Vacant  
 M = Modern (built after 1975)  
 NE = Previously Determined Not Eligible with SHPO Concurrence (2003)





Base map: U.S. Geological Survey, 2012.  
 Data: Reproduced with permission granted by County of Santa Clara.  
 July, 2014) County of Santa Clara (License Seal) © 2014 County of Santa Clara, all rights reserved.



- Architectural APE
- Historic District
- Project Footprint

- E-01 Map Reference Number (Eligible)  
Eligible for or listed in the NRHP and CRHR as per current survey
- E-01 Map Reference Number (Eligible)  
Previously determined eligible for or listed in the NRHP and CRHR per 2003 HRER

- E-01 Map Reference Number (CEQA only)  
Historical Resource for the purposes of CEQA only
- E-01 Map Reference Number (Not Eligible)  
Not eligible for listing in NRHP or CRHR as per current survey

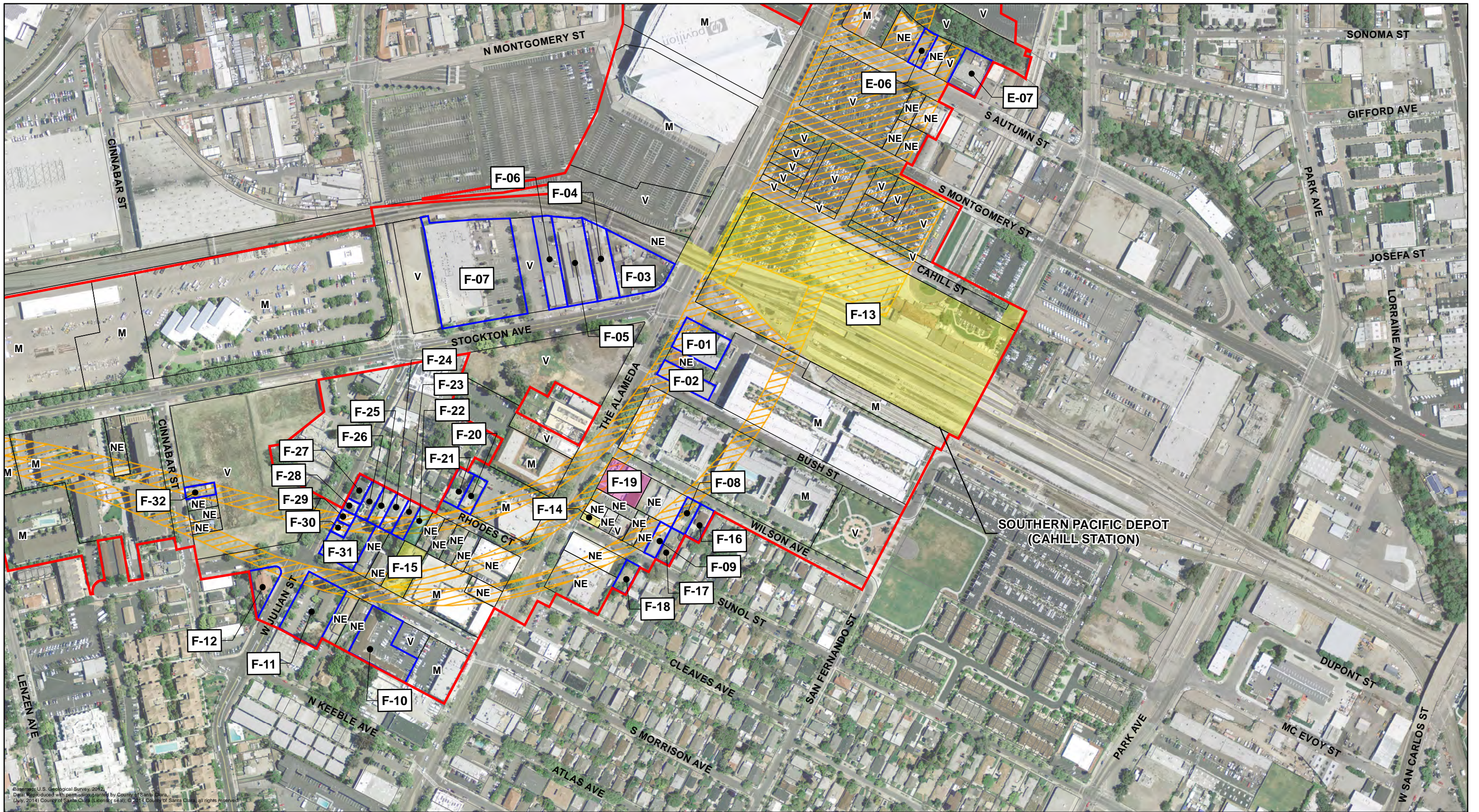
Figure D.1-E. Architectural APE

V = Vacant  
 M = Modern (built after 1975)  
 NE = Previously Determined Not Eligible with SHPO Concurrence (2003)

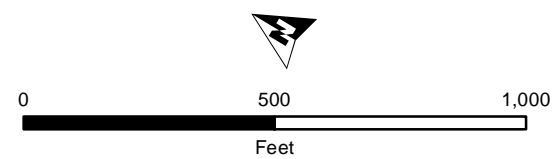
Source: USGS 1:100,000 Quadrangle, San Jose, CA (1978).







Base map: U.S. Geological Survey, 2012.  
 Digital reproduction with permission granted by County of Santa Clara.  
 (July, 2014) County of Santa Clara. (License: 54.0). © 2014 County of Santa Clara. All rights reserved.



- Architectural APE
- Historic District
- Project Footprint

- F-01 Map Reference Number (Eligible)  
Eligible for or listed in the NRHP and CRHR as per current survey
- F-01 Map Reference Number (Eligible)  
Previously determined eligible for or listed in the NRHP and CRHR per 2003 HRER

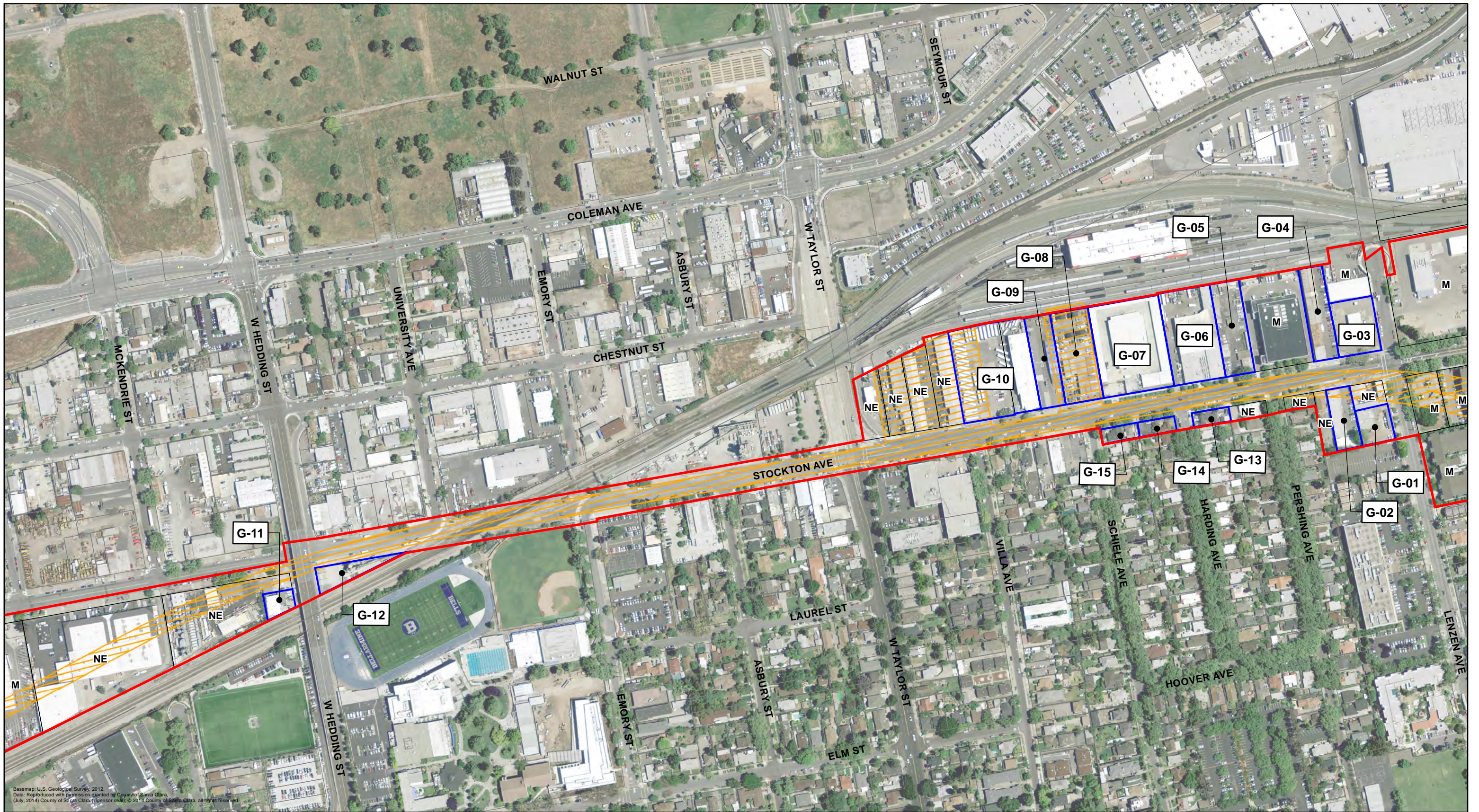
- F-01 Map Reference Number (CEQA only)  
Historical Resource for the purposes of CEQA only
- F-01 Map Reference Number (Not Eligible)  
Not eligible for listing in NRHP or CRHR as per current survey

Figure D.1-F. Architectural APE

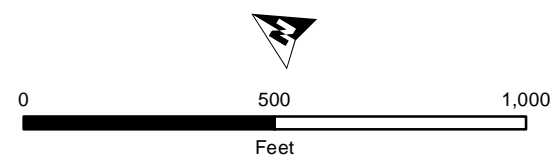
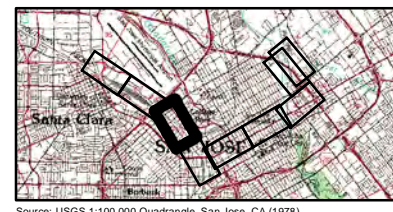
V = Vacant  
 M = Modern (built after 1975)  
 NE = Previously Determined Not Eligible with SHPO Concurrence (2003)

Source: USGS 1:100,000 Quadrangle, San Jose, CA (1978).





Base map: U.S. Geological Survey, 2012.  
 Data: Reproduced with permission granted by County of Santa Clara  
 (July, 2014) County of Santa Clara (License only). © 2014 County of Santa Clara. All rights reserved.



- Architectural APE
- Historic District
- Project Footprint

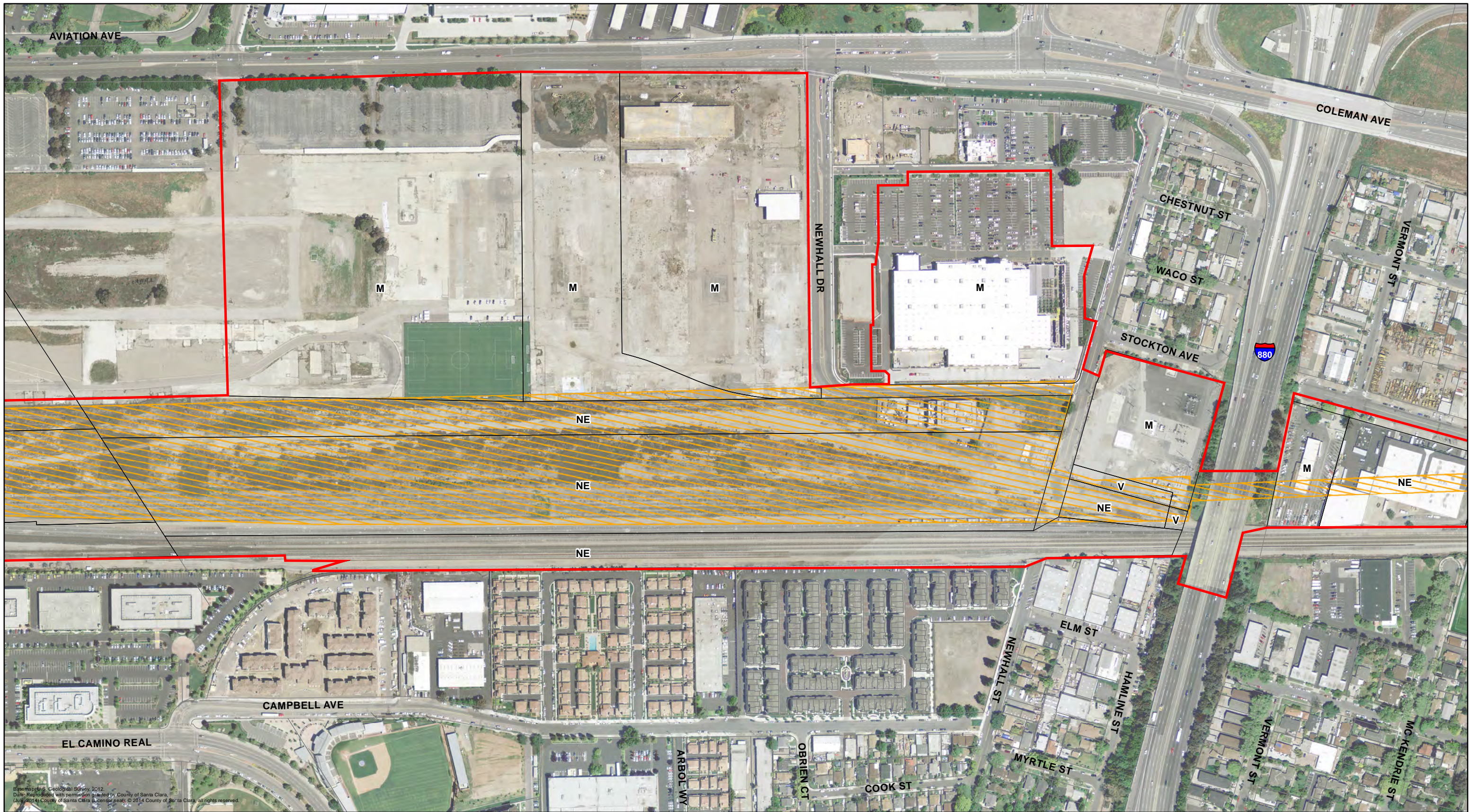
- G-01 Map Reference Number (Eligible)  
Eligible for or listed in the NRHP and CRHR as per current survey
- G-01 Map Reference Number (Eligible)  
Previously determined eligible for or listed in the NRHP and CRHR per 2003 HRER

- G-01 Map Reference Number (CEQA only)  
Historical Resource for the purposes of CEQA only
- G-01 Map Reference Number (Not Eligible)  
Not eligible for listing in NRHP or CRHR as per current survey

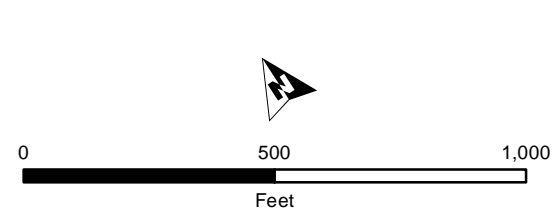
Figure D.1-G. Architectural APE

V = Vacant  
 M = Modern (built after 1975)  
 NE = Previously Determined Not Eligible with SHPO Concurrence (2003)





Base map: U.S. Geological Survey, 2012.  
 Data: Reproduced with permission granted by County of Santa Clara.  
 (air) 2014 County of Santa Clara License: aerial. © 2014 County of Santa Clara, all rights reserved.



- Architectural APE
- Historic District
- Project Footprint

- H-01 Map Reference Number (Eligible)  
Eligible for or listed in the NRHP and CRHR as per current survey
- H-01 Map Reference Number (Eligible)  
Previously determined eligible for or listed in the NRHP and CRHR per 2003 HRER

- H-01 Map Reference Number (CEQA only)  
Historical Resource for the purposes of CEQA only
- H-01 Map Reference Number (Not Eligible)  
Not eligible for listing in NRHP or CRHR as per current survey

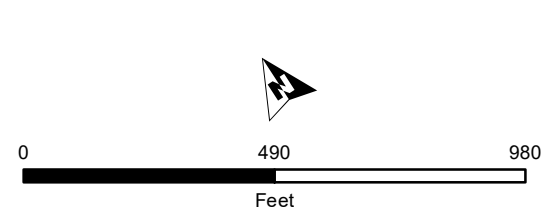
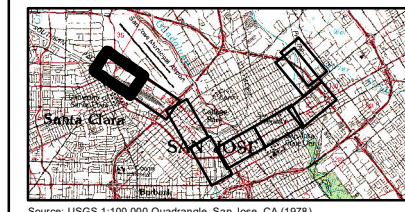
**Figure D.1-H. Architectural APE**

V = Vacant  
 M = Modern (built after 1975)  
 NE = Previously Determined Not Eligible with SHPO Concurrence (2003)





Base map: U.S. Geological Survey, 2012.  
 Data: Reproduced with permission granted by County of Santa Clara, CA (July, 2014) County of Santa Clara (Licensor set), © 2014 County of Santa Clara, all rights reserved.



- Architectural APE
- Historic District
- Project Footprint

- I-01 Map Reference Number (Eligible) Eligible for or listed in the NRHP and CRHR as per current survey
- I-01 Map Reference Number (Eligible) Previously determined eligible for or listed in the NRHP and CRHR per 2003 HRER

- I-01 Map Reference Number (CEQA only) Historical Resource for the purposes of CEQA only
- I-01 Map Reference Number (Not Eligible) Not eligible for listing in NRHP or CRHR as per current survey

Figure D.1-I. Architectural APE

V = Vacant  
 M = Modern (built after 1975)  
 NE = Previously Determined Not Eligible with SHPO Concurrence (2003)

