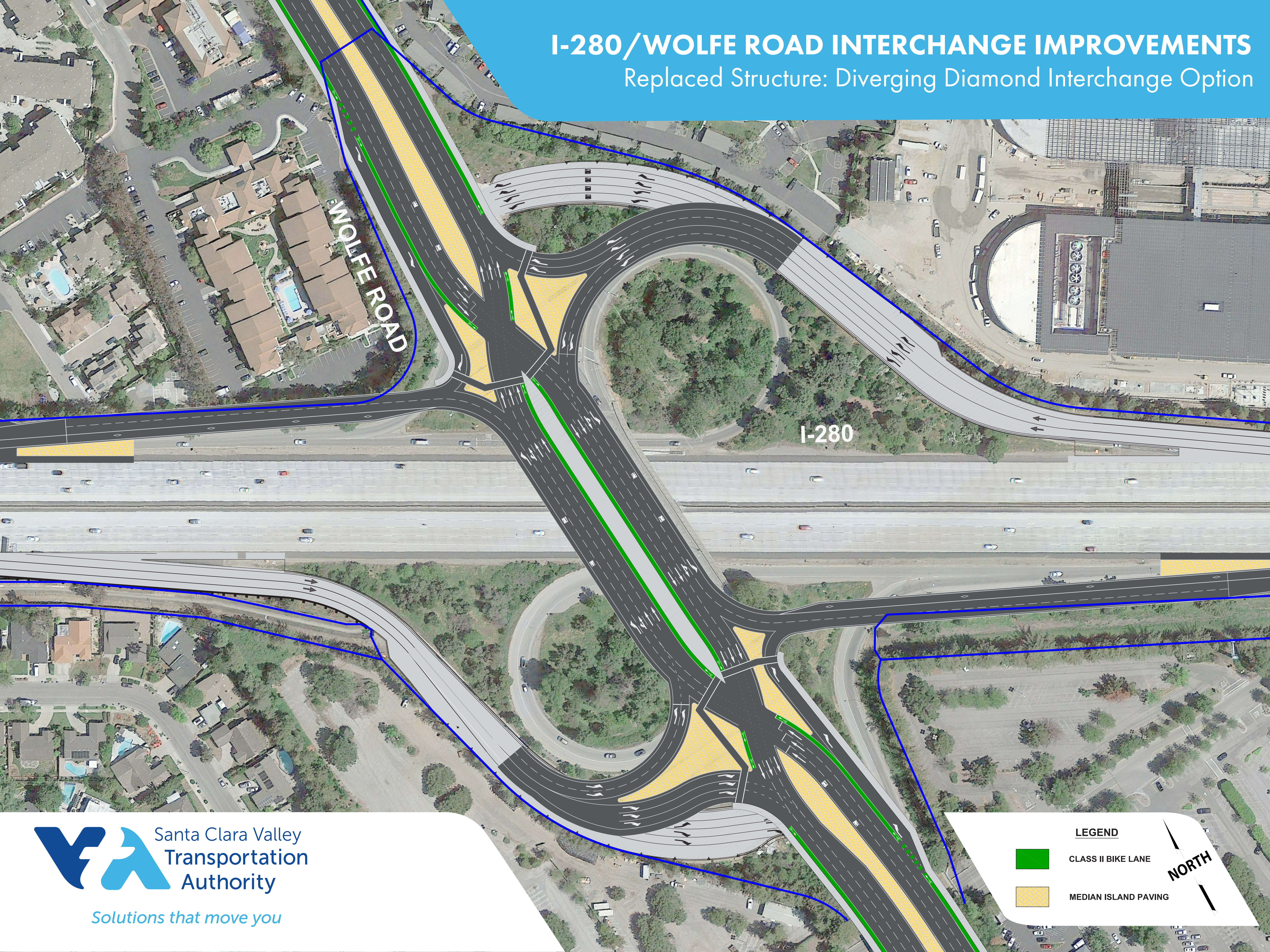


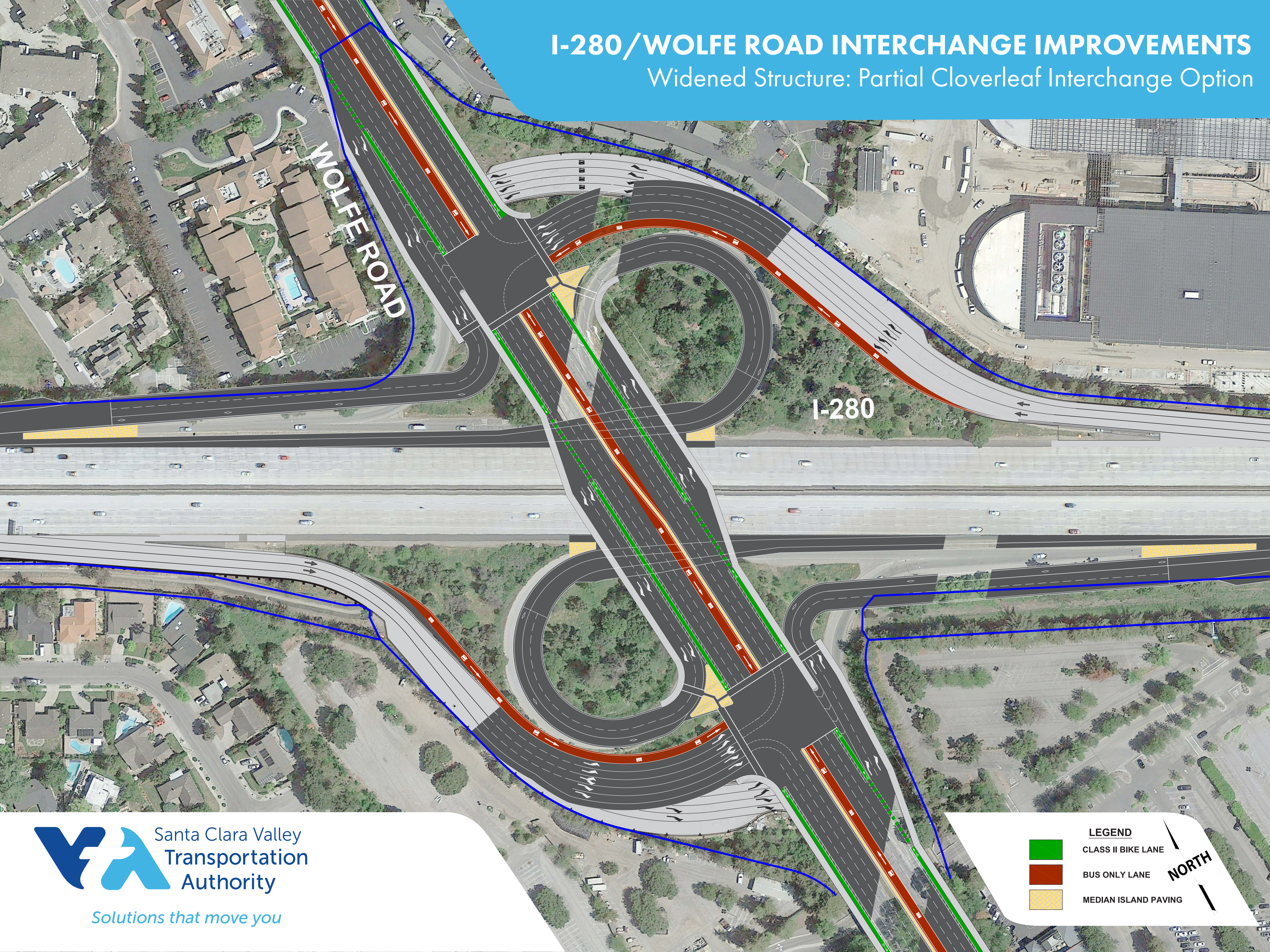
I-280/WOLFE ROAD INTERCHANGE IMPROVEMENTS

Replaced Structure: Diverging Diamond Interchange Option



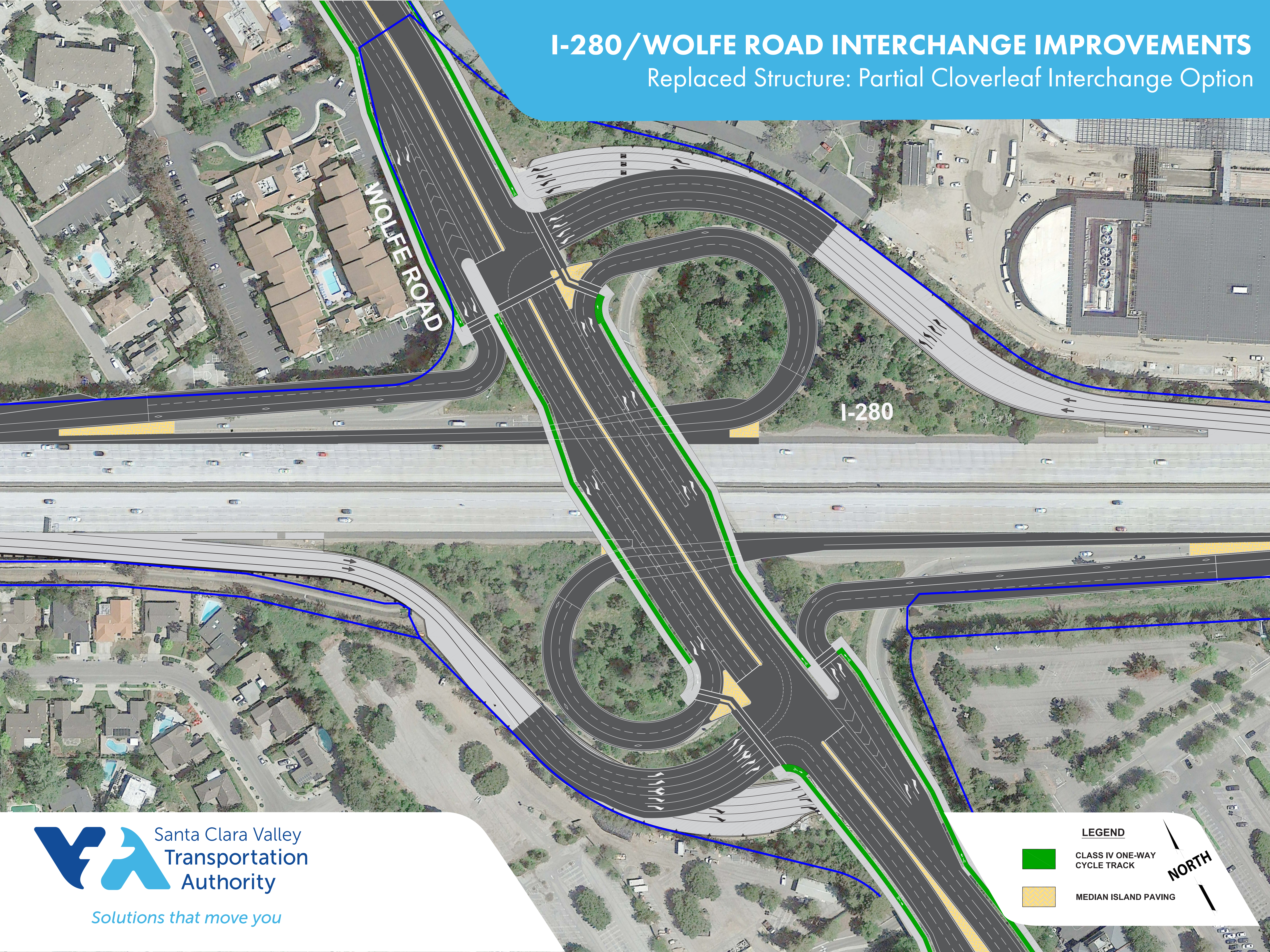
I-280/WOLFE ROAD INTERCHANGE IMPROVEMENTS

Widened Structure: Partial Cloverleaf Interchange Option

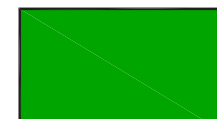



I-280/WOLFE ROAD INTERCHANGE IMPROVEMENTS

Replaced Structure: Partial Cloverleaf Interchange Option



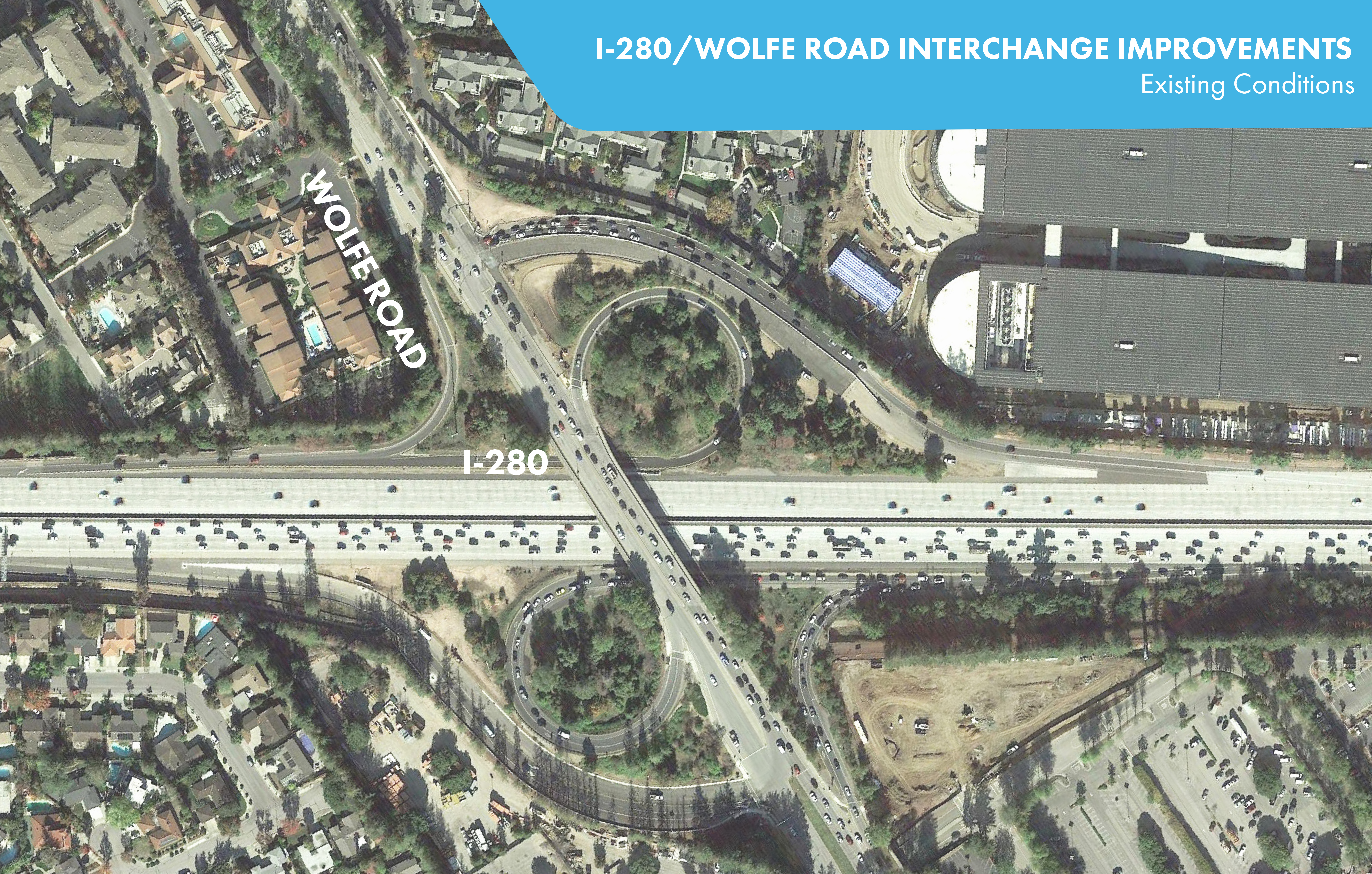
LEGEND

-  CLASS IV ONE-WAY CYCLE TRACK
-  MEDIAN ISLAND PAVING



I-280/WOLFE ROAD INTERCHANGE IMPROVEMENTS

Existing Conditions



WOLFE ROAD

I-280



PROJECT GOALS

- Reduce congestion
- Improve access for bicycles and pedestrians
- Promote transit and carpool use
- Support nearby businesses and residents
- Deliver a cost-effective project

I-280/WOLFE ROAD INTERCHANGE IMPROVEMENTS

Project process and timeline



PROJECT INITIATION DOCUMENT (PID)

2016-2017

ALTERNATIVE ANALYSIS

- Identify purpose and need
- Conceptualize and evaluate alternatives
- Develop preliminary cost estimates

PROJECT STUDY REPORT - PROJECT DEVELOPMENT SUPPORT

- Establish program funding
- Identify right-of-way impacts
- Review available traffic planning and environmental information

PROJECT APPROVAL & ENVIRONMENTAL DOCUMENT (PA&ED)

2017-2018

ENVIRONMENTAL TECHNICAL STUDIES

- Scoping outreach
- Identify potential impacts and mitigations
- Public review

TRAFFIC OPERATIONS ANALYSIS

- Record existing conditions
- Obtain additional traffic counts
- Forecast design year volumes
- Determine lane configurations

GEOMETRIC DRAWINGS

- Preliminary roadway design
- Decisions of bike, pedestrian, and transit options

PLANS, SPECIFICATIONS AND ESTIMATE (PS&E)

2018-2019

FINAL DESIGN

AESTHETIC DETAILS

STORM WATER AND ENVIRONMENTAL ELEMENTS

CONSTRUCTION

2020-2021

TRAFFIC HANDLING AND DETOURS

STRUCTURE AND ROADWAY MODIFICATIONS

UTILITY RELOCATIONS