




Appendix H
Socioeconomics - Easements

Temporary Easements

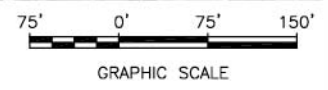
McKenney May 03, 2010 10:01 am H:\2009\RDW_VIA - SITE\ERW-B\2204\2204-B2050.dwg



LEGEND

-  PROPOSED TEMPORARY CONSTRUCTION EASEMENT (TCE) (659 SF)
-  PROPOSED INGRESS / EGRESS EASEMENT (IEE) (14252 SF)
-  PROPOSED STORM DRAINAGE EASEMENT (SDE) (330 SF)

H-1





CITY OF MILPITAS - SANTA CLARA COUNTY
CITY OF FREMONT - ALAMEDA COUNTY

022-01-014
SPINNAKER LLC
B2077

DIXON LANDING ROAD

U.P.R.R.

LEGEND



PROPOSED TEMPORARY CONSTRUCTION
EASEMENT (TCE) (2510 SF)



GRAPHIC SCALE



U. P. R. R



022-01-006
RREEF AMERICA
B2081

DIXON LANDING ROAD

MILLMONT DR

LEGEND



PROPOSED TEMPORARY CONSTRUCTION
EASEMENT (TCE) (4212 SF)

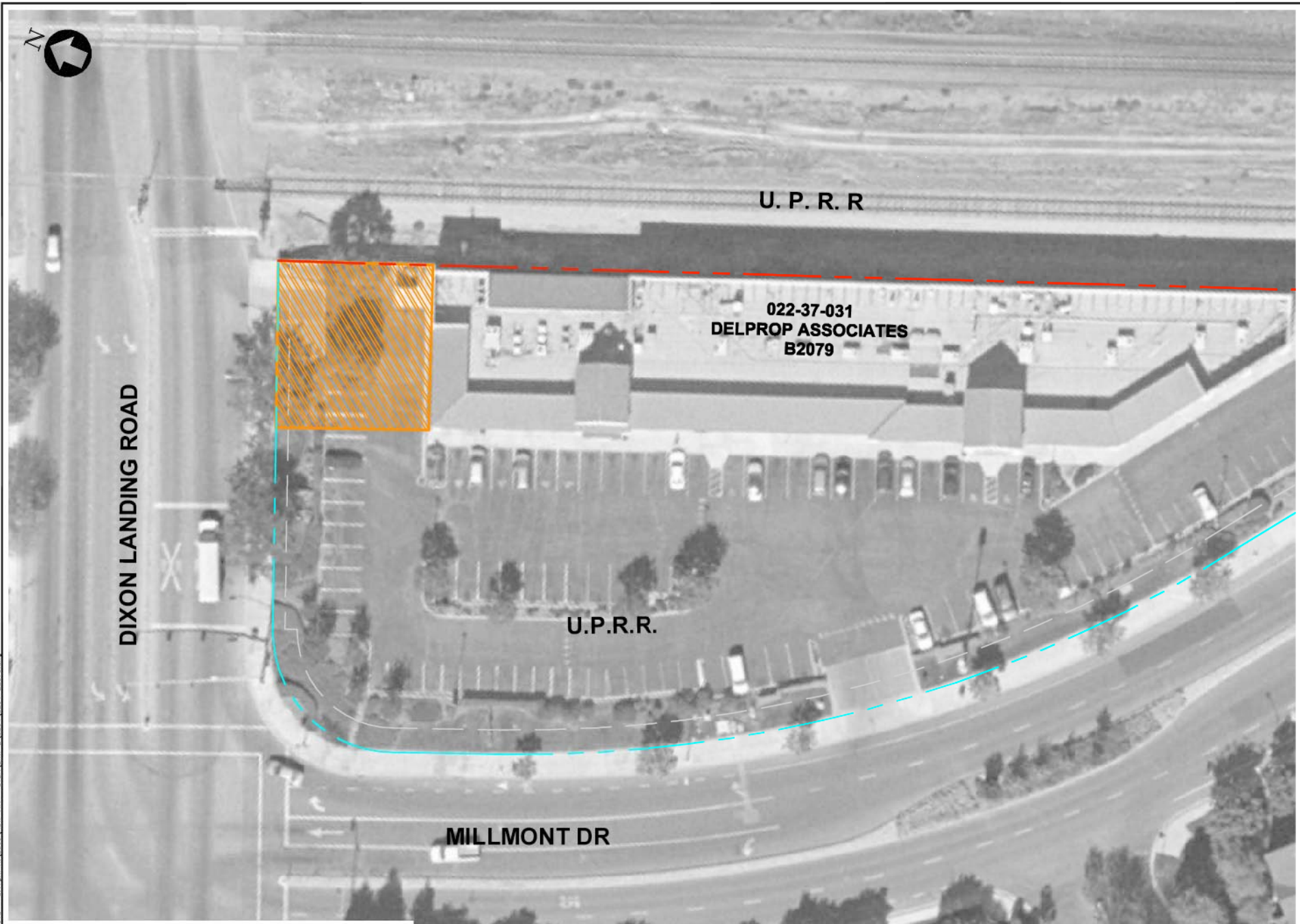
H-3



GRAPHIC SCALE



D:\monmon Apr 15, 2010 - 5:17pm H:\2009\RDW_VTA - SYBKA_ERW-B\2004\2004-B27279.dwg

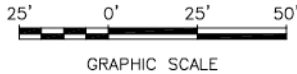


LEGEND



PROPOSED TEMPORARY CONSTRUCTION EASEMENT (TCE) (4302 SF)

H-4



GRAPHIC SCALE






MONTAGUE EXPRESSWAY

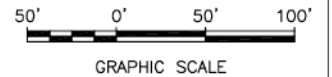
GLADDING CT

**092-08-084
JACK & MARIE COX
B2257**

LEGEND

-  PROPOSED AREA OF ADDITIONAL ROW ACQUISITION FOR SVRT FACILITIES (FEE) (50932 SF)
-  PROPOSED PUBLIC SERVICE EASEMENT (PSE) (3518 SF)
-  PROPOSED TEMPORARY CONSTRUCTION EASEMENT (TCE) (13504 SF)

H-5





MARTIN JUE ST

ROSEBRIAR WAY

FAN DR



HOLIN WAY

241-27-000
BERRYESSA VILLA HOMES
B2576

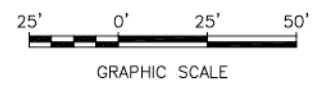
TAIDA ST

U.P.R.R.

LEGEND

-  PROPOSED TEMPORARY CONSTRUCTION EASEMENT (TCE) (800 SF)
-  PROPOSED INGRESS / EGRESS EASEMENT (IEE) (4642 SF)

H-6






D:\homen\Apr 13, 2010 1:42pm H:\2009\RDW VTA - SVBX\ERW-B\201\201-82576.dwg

Permanent Easements

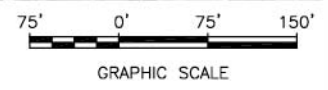
McKenney May 03, 2010 10:01 am H:\2009\RDW_VIA - SITE\ERW-B\2204\2204-B2050.dwg

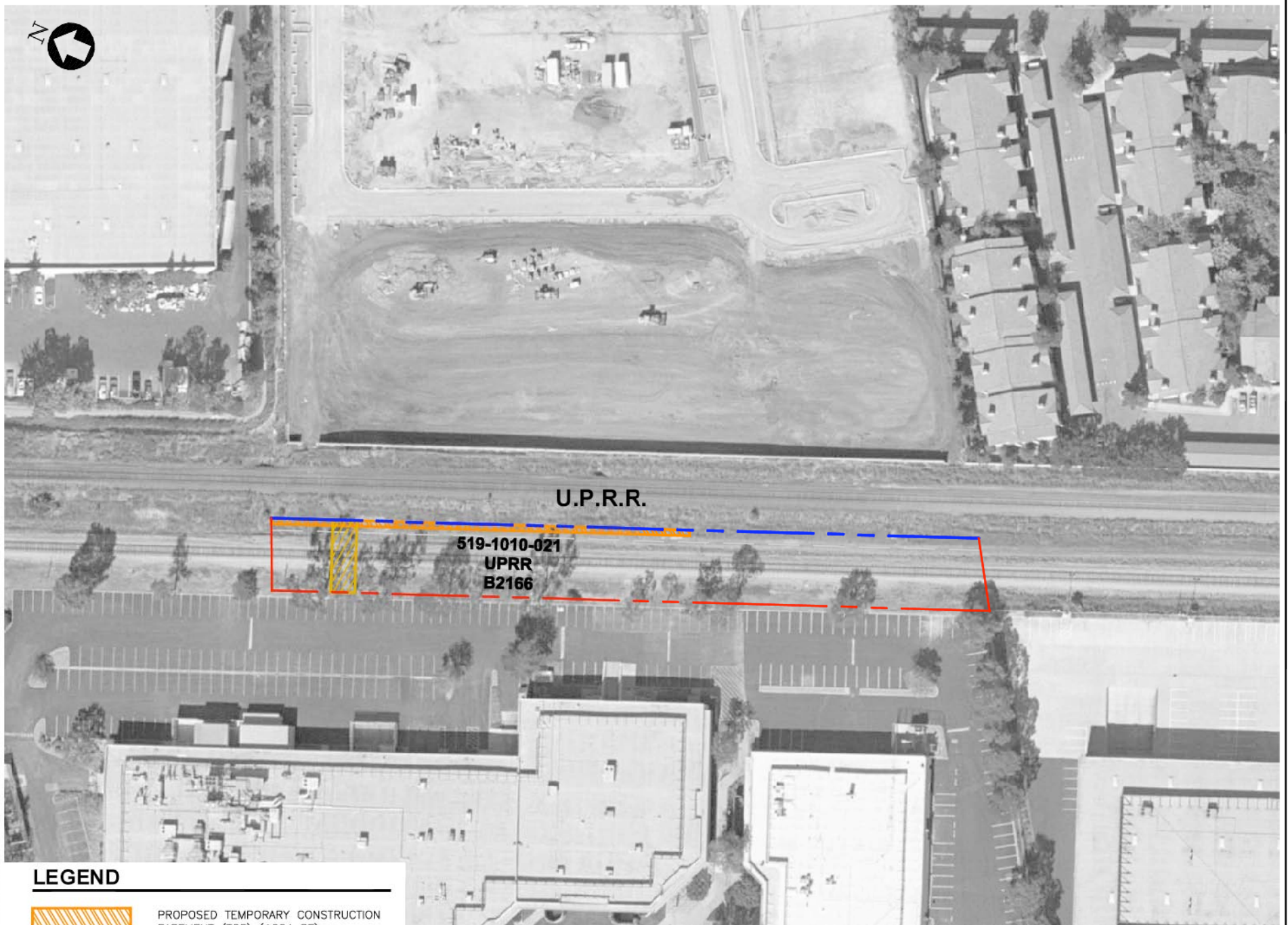


LEGEND

-  PROPOSED TEMPORARY CONSTRUCTION EASEMENT (TCE) (659 SF)
-  PROPOSED INGRESS / EGRESS EASEMENT (IEE) (14252 SF)
-  PROPOSED STORM DRAINAGE EASEMENT (SDE) (330 SF)

H-9





U.P.R.R.

519-1010-021
UPRR
B2166

LEGEND



PROPOSED TEMPORARY CONSTRUCTION
EASEMENT (TCE) (1664 SF)



PROPOSED UTILITY EASEMENT (UE)
(1200 SF)

H-10



GRAPHIC SCALE



DIXON LANDING ROAD

022-02-003
MILPITAS MOBILE HOME ESTATES
B2078

U.P.R.R.

LEGEND



PROPOSED AREA OF ADDITIONAL ROW ACQUISITION
FOR SVRT FACILITIES (FEE) (3781 SF)



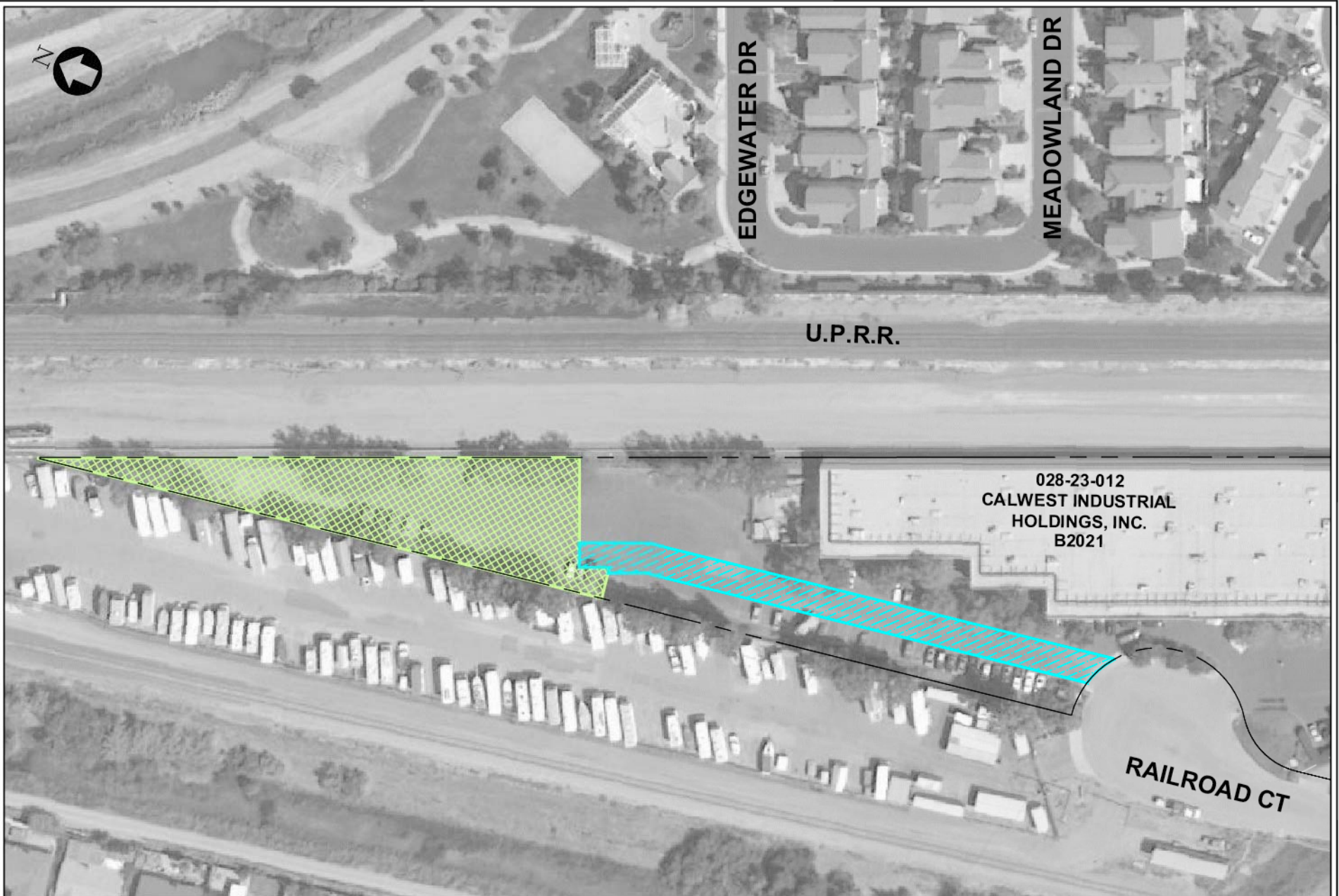
PROPOSED UTILITY EASEMENT (UE)
(2538 SF)

H-11



GRAPHIC SCALE

TOLENTINO_A Jun 23, 2010 8:36pm W:\SCADD\Phase 2 Design\SVRT US West\Gdr VA\IMPORTANT FILES\ROW\DATABASE\Geom\Earth\Aerial_Maps\VEIR ROW PARCEL_EXHIBITS\06-17_C204-B201-DE.dwg



EDGEWATER DR



MEADOWLAND DR

U.P.R.R.

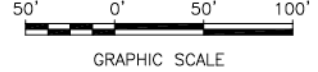
028-23-012
CALWEST INDUSTRIAL
HOLDINGS, INC.
B2021

RAILROAD CT

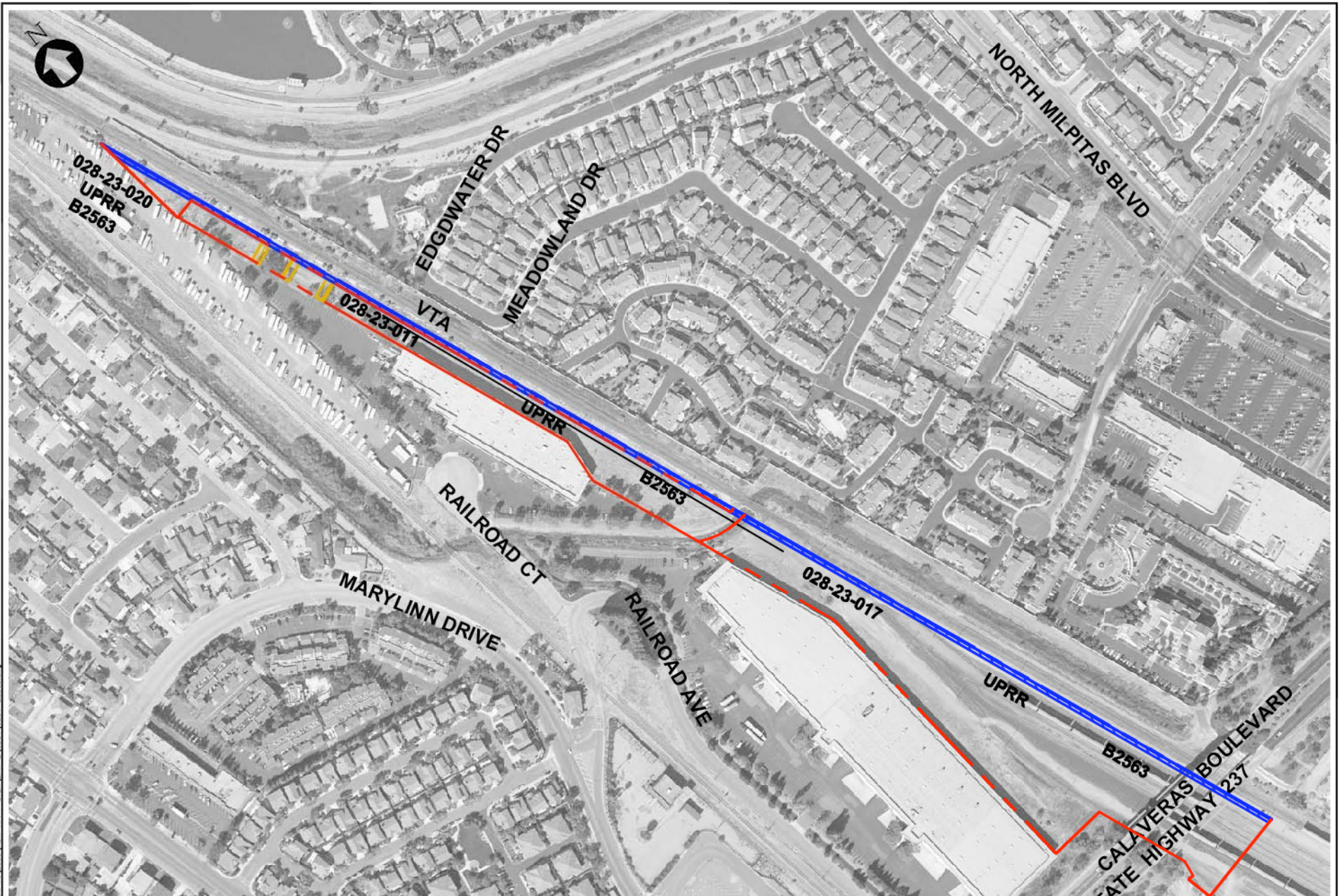
LEGEND

-  PROPOSED AREA OF ADDITIONAL ROW ACQUISITION FOR SVRT FACILITIES (FEE) (23870 SF)
-  PROPOSED INGRESS / EGRESS EASEMENT (IEE) (10110 SF)

H-12



May 05, 2010 - 10:35am H:\2009\H-13\003\VIEW VTA - SVEK\VIEW-B\CP04\CP04-B2563.dwg
D:\home



LEGEND

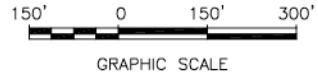


PROPOSED STORM DRAINAGE EASEMENT (SDE) (32251 SF)



PROPOSED UTILITY EASEMENT (UE) (3639 SF)

H-13



GRAPHIC SCALE



MARTIN JUE ST

ROSEBRIAR WAY

FAN DR



HOLIN WAY

241-27-000
BERRYESSA VILLA HOMES
B2576

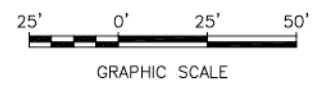
TAIDA ST

U.P.R.R.

LEGEND

-  PROPOSED TEMPORARY CONSTRUCTION EASEMENT (TCE) (800 SF)
-  PROPOSED INGRESS / EGRESS EASEMENT (IEE) (4642 SF)

H-14








D:\homen Apr 13, 2010 1:42pm H:\2009\RDW VTA - SVB\ERW-B\201\201-8276.dwg

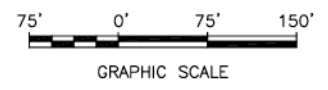
TRAN_R - Oct. 08, 2010 - 2:51pm - W:\USDAO\Phase 2 - Design\SWRT - LSN\Work\Kest - VA\IMPORTANT FILES\DOM\DATA\MSCF_Geople_Aerial_Maps\ER_ROW_PARCET_EXHIBITS\0701\0701-B2034-SF.dwg



LEGEND

-  PROPOSED TEMPORARY CONSTRUCTION EASEMENT (TCE) (22,104 SF)
-  PROPOSED INGRESS / EGRESS EASEMENT (IEE) (25,426 SF)
-  PROPOSED UTILITY EASEMENT (UE) (MCI - 7,184 SF) (CHEVRON - 7,425 SF)
-  PROPOSED CONSTRUCTION STAGING AREA (CSA) OR LAYDOWN EASEMENT (323,192 SF)
-  PROPOSED TEMPORARY INGRESS / EGRESS EASEMENT (TIEE) (16,416 SF)

H-15





LAS PLUMAS AVENUE

254-03-016
MARLENE IVY
B2144

N MARBURG WAY

BAYSHORE FREEWAY
U.S. HIGHWAY 101

LEGEND



PROPOSED AREA OF ADDITIONAL ROW ACQUISITION FOR SVRT FACILITIES (FEE) (39256 SF)



PROPOSED PUBLIC SERVICE EASEMENT (PSE) (3132 SF)

H-16



GRAPHIC SCALE



254-03-007
JOHN &
JACQUELINE
KOLANDER
B3012

LAS PLUMAS AVENUE

N MARBURG WAY

BAYSHORE FREEWAY

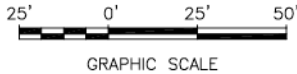
U.S. HIGHWAY 101

LEGEND



PROPOSED PUBLIC SERVICE EASEMENT
(PSE) (1805 SF)

H-17



GRAPHIC SCALE

May 04, 2010 - 4:37pm H:\2009\New_VIA - SVBK\ENR-B\C251\C251-B3012.dwg



LAS PLUMAS AVENUE

254-03-027
UPRR
B3100

N MARBURG WAY

BAYSHORE FREEWAY

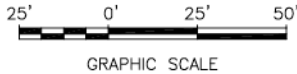
U.S. HIGHWAY 101

LEGEND



PROPOSED PUBLIC SERVICE EASEMENT
(PSE) (1279 SF)

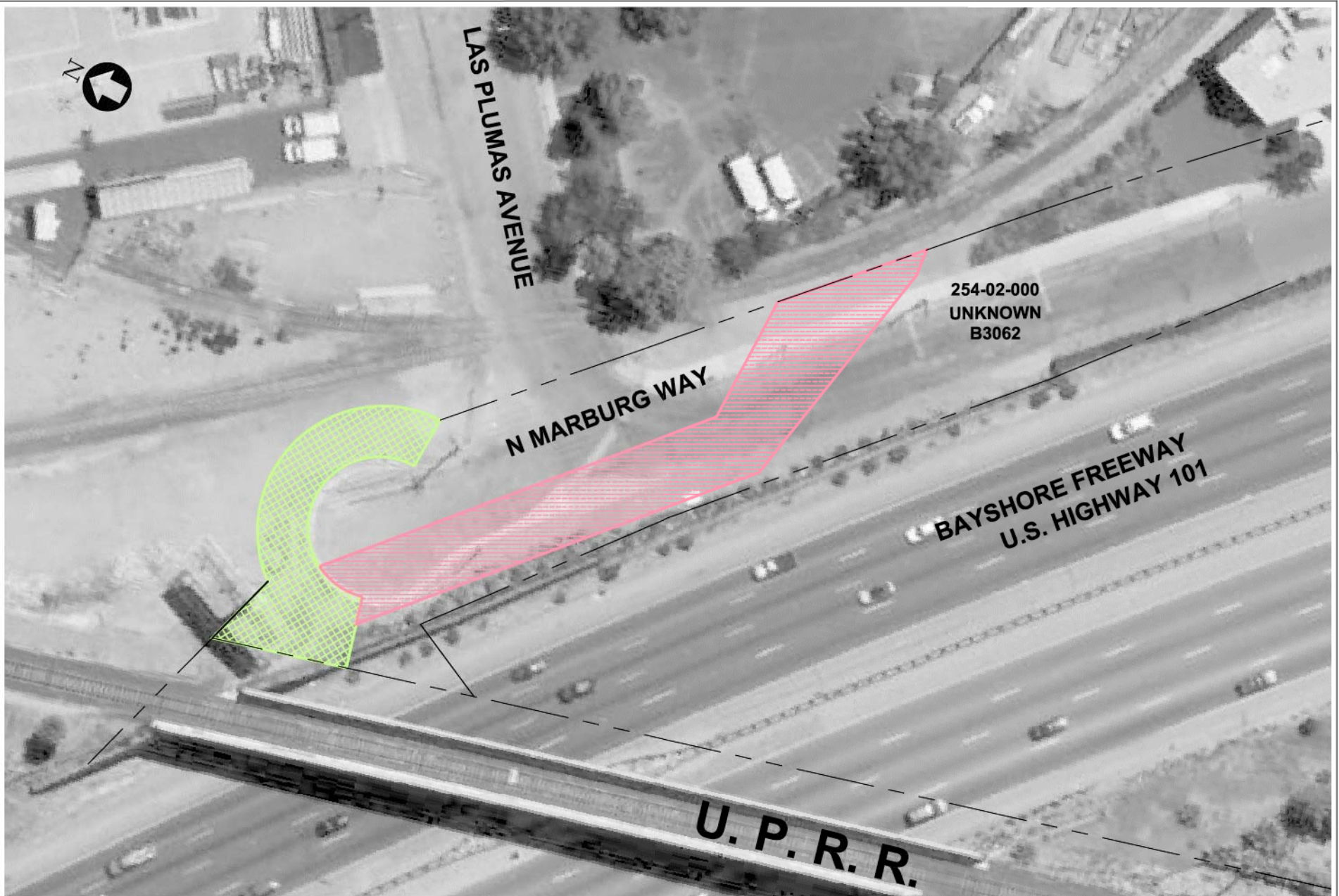
H-18



GRAPHIC SCALE

Apr 13, 2010 1:53pm H:\2009\RDW_VTA - SVB\XLEW-B\201\201-B3100.dwg

TOLENTINO_A Aug 04, 2010 1:54pm W:\SCADD\Phase 2 Design\SVRT US\Work\City_VA\IMPORTANT FILES\WORK DATABASE\Google Earth_Aerial_Maps\ER_ROW_PARCEL_EXHIBITS\201\201-83092-06.dwg



LEGEND

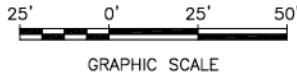


PROPOSED AREA OF ADDITIONAL ROW ACQUISITION FOR SVRT FACILITIES (FEE) (3440 SF)



PROPOSED PUBLIC SERVICE EASEMENT (PSE) (7242 SF)

H-19



GRAPHIC SCALE