

Central Bikeway Feasibility Study

Pre-Proposal Conference RFP S19261

March 3, 2020

Background – How did we get here?



- Currently **800** miles of bikeway in County, **200** miles of bicycle paths
- VTA is proposing a cross-County network of Bicycle Superhighways
- Allow people of all ages and abilities to connect on low-stress bikeways across the County



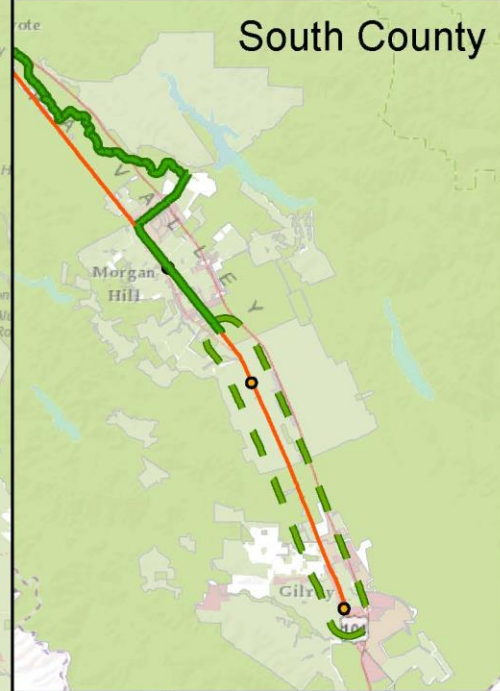
Problem – Gaps and Safety Concerns



- Countywide bike plan **(2018)**
 - Barriers
 - Crossings
 - Gaps
 - Network connections
- People want to avoid high-speed, stressful roadways
- No long distance safe, low stress, east-west bicycle connections



Bicycle Superhighway Network



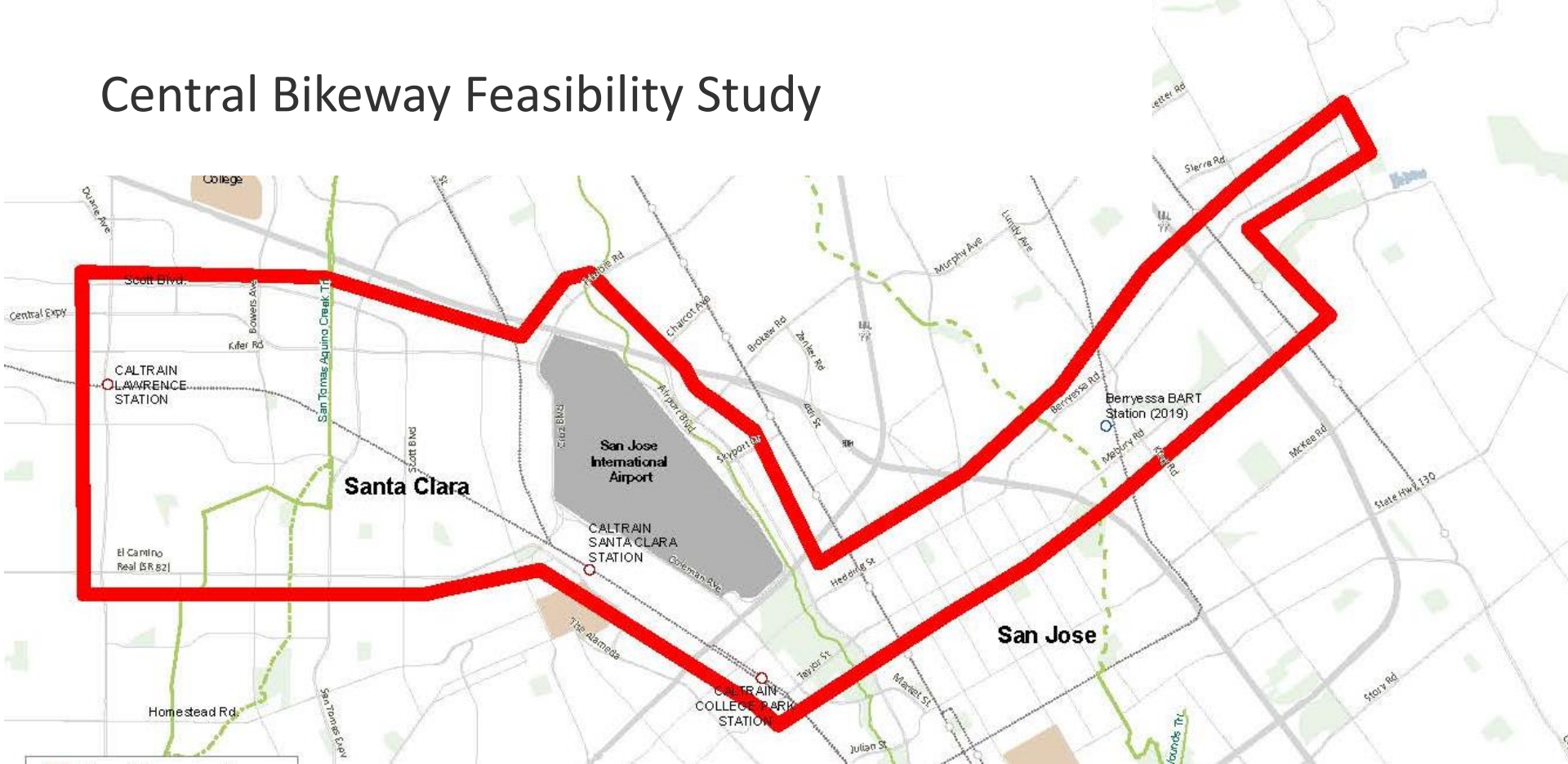
Vision: Superhighways



- Routes separated mainly from automobiles – 12 candidate corridors
- High-quality, joyful, connections throughout County
- Builds on existing trail network
 - Guadalupe River Trail
 - Bay Trail
 - Stevens Creek Trail
- Includes on-street bikeway currently being planned by local agencies



Central Bikeway Feasibility Study



Project Scope

- Identify preferred alternative for continuous, connected low-stress bicycle superhighway between Santa Clara and East San Jose
- Located generally along El Camino Real/Central Expressway and connection east to Berryessa BART in East San Jose
- Final Deliverable is plan that includes:
 - Summary of community and agency goals
 - 10% design drawings for individual segments
 - Implementation strategy



Related Planning Efforts



- Sunnyvale Bicycle Master Plan Update
- Trimble/De La Cruz/101 Interchange Redesign
- San Jose Better Bikeways Program/Bike Plan Update
- Berryessa Station Multimodal Transportation Improvement Plan
- Countywide Bike Plan
- Santa Clara Bike Plan



Objectives

- Involve communities, especially disadvantaged communities in developing preferred alignment and design for corridor; co-create
- Support other agency plans and land-use goals along corridor, while addressing conflicts between plans
- Incorporate innovative solutions for a functional and joyful bikeway
- Identity short- and long-term solutions, funding strategies, and an implementation plan



Outreach Objectives

- Involve Community Based Organizations (CBO) to develop outreach strategy and project vision
- Must identify in Proposal CBO's to engage as subconsultants/sub-contractors; confirmed by VTA
- Budget to compensate CBO's
- Doing something “**New**”



Partner Agencies

- VTA leading effort with close collaboration of partner agencies:
- City of Santa Clara
- City of San Jose
- Santa Clara County
- Other potential stakeholders:
 - Caltrans
 - San Jose Mineta International Airport
 - Santa Clara Valley Water District
 - California Public Utilities Commission



Funding

- Caltrans Sustainable Communities Planning Grant awarded May 2019
- VTA is using grant funding to pay for VTA staff time and consultant
- VTA staff time includes project manager and outreach staff



Period of Performance

- June 2020 – VTA and consultant execute contract
- December 31, 2021 – Consultant work completed
- February 28, 2022 – Grant requires all work to be completed

No opportunities for extensions



Accessibility

- All documents intended for public distribution **must** meet Web Content Accessibility Guidelines (WCAG) 2.0 requirements. See <https://www.w3.org/TR/WCAG20/>
- We will not be able to post documents on our website that do not meet Accessibility Guidelines.



Public Meetings and Outreach Event Responsibilities

VTA Community Outreach and Public Engagement team (COPE)

- Meeting logistics
- Room reservations
- Room fees
- Public announcements
- Meeting summaries
- Translation of printed materials
- Up to two staff per meeting

Consultant

- Pre-meeting strategy meetings
- Development of meeting materials
- Meeting attendance and presentation
- Review and comments of post-meeting summaries
- Live interpretation services
- Food
- Necessary childcare services
- Other items not covered by COPE

